



# SPORTRAK TIRES

TRUCK/BUS TIRES  
CAR TIRES  
2023



**SPORTRAK TIRE GROUP LIMITED.**

ADD: Shandong Highspeed West Coast Center, No. 877 Lijiang West Road, Huangdao District, Qingdao, China.  
Tel: 86-532-68972573 86-532-68979879 86-532-68972261  
Email: info@sportraktire.com web: www.sportraktire.com www.81tyre-exp.com

**SPORTRAK TIRE**  
*just run just win*



**SEEK FOR EXCELLENT QUALITY  
CAST ON PERFECT TIRES**

## **ENTERPRISE INTRODUCTION**

**SPORTRAK TIRE GROUP LIMITED** is a direct state-owned group, located in Zaozhuang city, China. We have built two tire factories:

One specializes in manufacturing Truck/Bus Radial Tires, whose annual output at 5.00 million pcs; The other is Passenger Car Tire factory, the annual production capacity at 12 million pcs. Meanwhile we have invested and built a rubber processing plant in Thailand, to process natural rubber, and mainly supply our own tire factories, with stable quality and delivery.

We now own one national tire laboratory certified by CNAS, the world advanced disposable mixing method has obtained the national technology award; the advanced VMI molding machines and other main manufacturing machines and testing equipments are imported from Europe and Japan, moreover we'd adopted the NANO green technology during the manufacturing

Our tires "**SPORTRAK**" and "**SUPERWAY**" brand, with highly warranty quality, and more competitive price, have been well sold in more than 100 countries and regions such as Southeast Asia, North America, Europe, Middle East, Africa, South America etc....

We sincerely hope our tires would bring our partners and customers more benefits, with our perfect passion and service.

**SPORTRAK TIRE**  
*just run just win*



SP107

SP301

SP302

SP303

SP304



SP310

SP312

SP313

SP314

SPX315



SP339

SP366

SP395

SP396

SP397



SP506

SP507

SPX508

SPX509

SP510



SP603

SP639

SP831

SP832

SP901



SP908

SP909

SP910

SP911

SP912



SP920

SP921

SP922

SP923

SP928



SP990

SP997



SP305

SP306

SP307

SP308

SP309



SP316

SP317

SP328G+

SP329

SP335



SP398

SPX501

SP502

SP503

SP505



SP511

SP512

SP516

SP601

SPX601



SP902

SP903

SP905

SP906

SP907



SP913

SP915

SP916

SP917

SP918



SP929

SP962

SP965

SP981

SP982

# TRUCK / BUS TIRES







**ALWAYS GIVE YOU UNEXPECTED SURPRISE  
SPORTRAK TIRES**





# SP107



- ◊.Special tread compound effectively prevent tread chunking and puncture
- ◊.Enhanced sidewall and circumference design prevent better sidewall scratch
- ◊.Big block pattern provide better drive performance in mining area
- ◊.Rise and fall groove bottom design protect groove bottom from groove bottom puncture

| SIZE        | STANDARD RIM | PLY RATING | LOAD INDEX SINGLE/DUAL | SPEED RATE      | TREAD DEPTH(mm) | MAX LOAD(kg) | PRESSURE(kpa) |
|-------------|--------------|------------|------------------------|-----------------|-----------------|--------------|---------------|
| 14.00R25NHS | 10.00/2.0    | /          | /                      | 10KM/H (50KM/H) | 26.7            | 10000/5800   | 950(700)      |
| 16.00R25NHS | 11.25/2.0    | /          | /                      | 10KM/H (50KM/H) | 31.2            | 12850/8000   | 950(800)      |



# SP301



- ◊.Suitable for all wheel positions of middle/long-distance buses and steering wheel position of trucks on good road conditions.
- ◊.4 linear grooves design provides excellent directional driving performance and prevents uneven tire wear.

| SIZE        | STANDARD RIM | PLY RATING | LOAD INDEX SINGLE/DUAL | SPEED RATE | TREAD DEPTH(mm) | MAX LOAD(kg) | PRESSURE(kpa) |
|-------------|--------------|------------|------------------------|------------|-----------------|--------------|---------------|
| 9.5R17.5    | 6.75         | 18PR       | 143/141                | J          | 13.6            | 2725/2575    | 875           |
| 10R22.5     | 7.50         | 16PR       | 144/142                | L          | 15.1            | 2800/2650    | 900           |
| 225/70R19.5 | 6.75         | 14PR       | 128/126                | M          | 13              | 1800/1700    | 760           |
| 245/70R19.5 | 7.50         | 16PR       | 135/133                | L          | 13              | 2180/2060    | 830           |
| 265/70R19.5 | 7.50         | 16PR       | 143/141                | J          | 13              | 2727/2575    | 850           |
| 295/60R22.5 | 9.00         | 18PR       | 150/147                | K          | 16              | 3350/3075    | 900           |
| 315/60R22.5 | 9.75         | 18PR       | 151/148                | L          | 14.5            | 3650/3350    | 900           |
| 315/70R22.5 | 9.00         | 18PR       | 151/148                | M          | 14.5            | 3450/3150    | 830           |



# SP302



- ◊.Suitable for all wheel positions of middle/long-distance buses and steering wheel position of trucks on good road conditions.
- ◊.4 linear grooves design provides excellent directional driving performance and prevents uneven tire wear.

| SIZE        | STANDARD RIM | PLY RATING | LOAD INDEX SINGLE/DUAL | SPEED RATE | TREAD DEPTH(mm) | MAX LOAD(kg) | PRESSURE(kpa) |
|-------------|--------------|------------|------------------------|------------|-----------------|--------------|---------------|
| 8R17.5      | 6.00         | 12PR       | 122/120                | J          | 13              | 1500/1400    | 760           |
| 8.5R17.5    | 6.00         | 12PR       | 121/120                | M          | 11.5            | 1450/1400    | 625           |
| 215/75R17.5 | 6.00         | 16PR       | 135/133                | L          | 13              | 2180/2060    | 860           |
| 235/75R17.5 | 6.75         | 16PR       | 143/141                | L          | 13              | 2725/2527    | 860           |
| 255/70R22.5 | 7.50         | 16PR       | 140/137                | N          | 10.5            | 2500/2300    | 830           |
| 275/70R22.5 | 8.25         | 16PR       | 148/145                | M          | 13              | 3150/2900    | 900           |



# SP303



- ◊.Used for driving wheel
- ◊.Widen tread design, can increase the contact area of tread and ground grasping
- ◊.Transverse pattern design, supply good self-cleaning

| SIZE        | STANDARD RIM | PLY RATING | LOAD INDEX SINGLE/DUAL | SPEED RATE | TREAD DEPTH(mm) | MAX LOAD(kg) | PRESSURE(kpa) |
|-------------|--------------|------------|------------------------|------------|-----------------|--------------|---------------|
| 275/70R22.5 | 8.25         | 16PR       | 148/145                | K          | 20.5            | 3150/2900    | 900           |
| 295/60R22.5 | 9.00         | 18PR       | 150/147                | K          | 19              | 3350/3075    | 900           |
| 315/70R22.5 | 9.00         | 18PR       | 151/148                | M          | 19              | 3450/3150    | 830           |
| 315/80R22.5 | 9.00         | 20PR       | 157/154                | L          | 20.5            | 4125/3750    | 900           |



# SP304



- ◊.Vertical deep groove design can provide excellent driving and braking force.
- ◊.The steel cord tire with high density. Good wear-resistant, high traction power. High load capacity.
- ◊.Can be used for mixed road condition.

| SIZE        | STANDARD RIM | PLY RATING | LOAD INDEX SINGLE/DUAL | SPEED RATE | TREAD DEPTH(mm) | MAX LOAD(kg) | PRESSURE(kpa) |
|-------------|--------------|------------|------------------------|------------|-----------------|--------------|---------------|
| 11R22.5     | 8.25         | 18PR       | 151/148                | G          | 20.4            | 3450/3150    | 930           |
| 12R22.5     | 9.00         | 18PR       | 152/149                | G          | 20.5            | 3350/3250    | 930           |
| 295/80R22.5 | 9.00         | 18PR       | 152/149                | G          | 20.5            | 3550/3250    | 900           |
| 315/80R22.5 | 9.00         | 20PR       | 157/154                | J          | 20.5            | 4125/3750    | 900           |
| 315/80R22.5 | 9.00         | 20PR       | 157/154                | J          | 23.5            | 4125/3750    | 900           |



# SP305



- ◊.Suitable for driving wheel position of middle long distance trucks on better road conditions
- ◊.Directional mixed pattern design provides extremely good traction and prevents hydroplaning.

| SIZE        | STANDARD RIM | PLY RATING | LOAD INDEX SINGLE/DUAL | SPEED RATE | TREAD DEPTH(mm) | MAX LOAD(kg) | PRESSURE(kpa) |
|-------------|--------------|------------|------------------------|------------|-----------------|--------------|---------------|
| 215/75R17.5 | 6.00         | 16PR       | 135/133                | J          | 13.6            | 2180/2060    | 865           |
| 225/70R19.5 | 6.75         | 14PR       | 128/126                | L          | 15              | 1800/1700    | 760           |
| 235/75R17.5 | 6.75         | 18PR       | 143/141                | J          | 13.6            | 2725/2575    | 865           |
| 245/70R19.5 | 7.50         | 14PR       | 133/131                | L          | 15              | 2060/1950    | 760           |
| 265/70R19.5 | 7.50         | 16PR       | 143/141                | J          | 17.5            | 2727/2575    | 850           |
| 275/80R22.5 | 8.25         | 18PR       | 149/146                | M          | 17.4            | 3250/3000    | 900           |



# SP306



- ◊.New low heat tire shoulder designed to provide excellent high-speed performance
- ◊.Widened tread design effectively increases the wear volume and extends tire life
- ◊.New design of tread provides excellent wear resistance
- ◊.Special desian provide self cleaning functiongresstan
- ◊.Unique tire shape and strong steel cord structure providing excellent durability performance

| SIZE        | STANDARD RIM | PLY RATING | LOAD INDEX SINGLE/DUAL | SPEED RATE | TREAD DEPTH(mm) | MAX LOAD(kg) | PRESSURE(kpa) |
|-------------|--------------|------------|------------------------|------------|-----------------|--------------|---------------|
| 425/65R22.5 | 13.00        | 20PR       | 165                    | K          | 18              | 5150         | 830           |
| 445/65R22.5 | 13.00        | 20PR       | 168                    | L          | 18              | 5600         | 830           |



# SP309



- ◊.Suitable for all position of trucks running on/off road.
- ◊.High traction

| SIZE      | STANDARD RIM | PLY RATING | LOAD INDEX SINGLE/DUAL | SPEED RATE | TREAD DEPTH(mm) | MAX LOAD(kg) | PRESSURE(kpa) |
|-----------|--------------|------------|------------------------|------------|-----------------|--------------|---------------|
| 365/80R20 | 10.00        | 16PR       | 160                    | K          | 20              | 4500         | 900           |
| 395/85R20 | 10.00        | 20PR       | 164                    | J          | 25              | 5600         | 850           |
| 14.00R20  | 10.00        | 20PR       | 164/161                | J          | 20              | 5000/4625    | 790           |
| 16.00R20  | 11.25        | 22PR       | 174/171                | G          | 20.5            | 6700/6150    | 760           |



# SP307



- ◊.Suitable for all position of trucks running on/off road.
- ◊.High traction

| SIZE      | STANDARD RIM | PLY RATING | LOAD INDEX SINGLE/DUAL | SPEED RATE | TREAD DEPTH(mm) | MAX LOAD(kg) | PRESSURE(kpa) |
|-----------|--------------|------------|------------------------|------------|-----------------|--------------|---------------|
| 7.50R16LT | 6.00G        | 8PR        | 122/118                | M          | 15              | 1500/1320    | 770           |
| 14.00P20  | 10.00        | 20PR       | 164/161                | J          | 20              | 4625/4250    | 690           |



# SP310



- ◊.Used in all wheel position of coach and van
- ◊.Good ground grasping capacity and sideslip resistance. Low shock when running
- ◊.Both suitable for rough road and highway

| SIZE      | STANDARD RIM | PLY RATING | LOAD INDEX SINGLE/DUAL | SPEED RATE | TREAD DEPTH(mm) | MAX LOAD(kg) | PRESSURE(kpa) |
|-----------|--------------|------------|------------------------|------------|-----------------|--------------|---------------|
| 6.50R16LT | 5.5F         | 12PR       | 110/105                | M          | 9.5             | 1060/925     | 670           |
| 7.00R16LT | 5.5F         | 14PR       | 118/114                | M          | 11              | 1320/1180    | 770           |



# SP308



- ◊.Suitable for all wheel position of middle/long-distance buses and steering wheel position of trucks on good road conditions
- ◊.4 linear grooves design provides excellent directional driving performance and prevent uneven tire wear.

| SIZE    | STANDARD RIM | PLY RATING | LOAD INDEX SINGLE/DUAL | SPEED RATE | TREAD DEPTH(mm) | MAX LOAD(kg) | PRESSURE(kpa) |
|---------|--------------|------------|------------------------|------------|-----------------|--------------|---------------|
| 9R22.5  | 6.75         | 14PR       | 136/134                | L          | 14.5            | 2240/2120    | 760           |
| 10R22.5 | 7.50         | 16PR       | 144/142                | M          | 15              | 2800/2650    | 790           |



# SP312



- ◊.position of trucks on good road conditions
- ◊.4 linear grooves design provides excellent directional driving performance and prevent uneven tire wear.

| SIZE        | STANDARD RIM | PLY RATING | LOAD INDEX SINGLE/DUAL | SPEED RATE | TREAD DEPTH(mm) | MAX LOAD(kg) | PRESSURE(kpa) |
|-------------|--------------|------------|------------------------|------------|-----------------|--------------|---------------|
| 275/80R22.5 | 8.25         | 16PR       | 149/146                | L          | 14.5            | 3000/2725    | 830           |
| 295/80R22.5 | 9.00         | 18PR       | 152/149                | M          | 14.5            | 3550/3250    | 900           |



# SP313



- ◊.Used for driving wheel
- ◊.For good road and mixed road condition
- ◊.Widen tread design ,can increase tread contact area and ground grasping capacity

| SIZE        | STANDARD RIM | PLY RATING | LOAD INDEX SINGLE/DUAL | SPEED RATE | TREAD DEPTH(mm) | MAX LOAD(kg) | PRESSURE(kpa) |
|-------------|--------------|------------|------------------------|------------|-----------------|--------------|---------------|
| 295/75R22.5 | 9.00         | 14PR       | 144/141                | L          | 23              | 2800/2575    | 760           |



# SP316



- ◊.Optimized internal contour design to improve durability significantly.
- ◊.High abrasion tread compound combined with widened tread width to enhance expected mileage markedly.
- ◊.Four straight mian pattern grooves to provide excellent handling and high-speed performance.
- ◊.Widened tread width to improve driving stability effectively, giving drivers a better sense of driving

| SIZE        | STANDARD RIM | PLY RATING | LOAD INDEX SINGLE/DUAL | SPEED RATE | TREAD DEPTH(mm) | MAX LOAD(kg) | PRESSURE(kpa) |
|-------------|--------------|------------|------------------------|------------|-----------------|--------------|---------------|
| 315/80R22.5 | 9.00         | 20PR       | 157/154                | L          | 16.5            | 4125/3750    | 900           |



# SP314



- ◊.The four vertical zigzag pattern groove design offers good traction and brake
- ◊.Special shoulder groove design reduce it's temperature
- ◊.Line of the groove takes special structure,which can keep tire clean from the stone effectively

| SIZE        | STANDARD RIM | PLY RATING | LOAD INDEX SINGLE/DUAL | SPEED RATE | TREAD DEPTH(mm) | MAX LOAD(kg) | PRESSURE(kpa) |
|-------------|--------------|------------|------------------------|------------|-----------------|--------------|---------------|
| 385/55R22.5 | 12.25        | 20PR       | 160                    | K          | 15.5            | 4500         | 900           |



# SP317



- ◊.High abrasion tread compound combined with widened tread width to enhance expected mileage markedly
- ◊.Enhanced chafer to avoid early damage
- ◊.Reinforced tyre body and band structure to provide stronger load capacity

| SIZE        | STANDARD RIM | PLY RATING | LOAD INDEX SINGLE/DUAL | SPEED RATE | TREAD DEPTH(mm) | MAX LOAD(kg) | PRESSURE(kpa) |
|-------------|--------------|------------|------------------------|------------|-----------------|--------------|---------------|
| 215/70R17.5 | 6.00G        | 10PR       | 118/116                | L          | 11.5            | 1320/1250    | 590           |



# SPX315



- ◊.Optimized pattern design,the tread patterns are designed by connecting bars,reducing partial wear and realize longer service life
- ◊.Optimize the shape design of the groove, reduce the damage of the carcass caused by the stone, and drive more safely

| SIZE        | STANDARD RIM | PLY RATING | LOAD INDEX SINGLE/DUAL | SPEED RATE | TREAD DEPTH(mm) | MAX LOAD(kg) | PRESSURE(kpa) |
|-------------|--------------|------------|------------------------|------------|-----------------|--------------|---------------|
| 295/80R22.5 | 9.00         | 18PR       | 152/149                | L          | 20.4            | 3550/3250    | 900           |
|             | 9.00         | 20PR       | 154/149                | L          | 20.4            | 3750/3250    | 850           |
| 315/80R22.5 | 9.00         | 20PR       | 157/154                | L          | 20.5            | 4125/3750    | 900           |



# SP328G+



- ◊.Suitable for all wheels
- ◊.Good traction and braking performance
- ◊.Good durabilit, anti-puncturing
- ◊.Applied to road with good even poor conditions

| SIZE        | STANDARD RIM | PLY RATING | LOAD INDEX SINGLE/DUAL | SPEED RATE | TREAD DEPTH(mm) | MAX LOAD(kg) | PRESSURE(kpa) |
|-------------|--------------|------------|------------------------|------------|-----------------|--------------|---------------|
| 6.50R16LT   | 5.5F         | 12PR       | 110/105                | M          | 9.5             | 1060/925     | 670           |
| 7.00R16LT   | 5.5F         | 14PR       | 118/114                | M          | 11              | 1320/1180    | 770           |
| 7.50R16LT   | 6.00G        | 16PR       | 125/121                | M          | 12.6            | 1650/1450    | 870           |
| 12.00R20    | 8.50         | 18PR       | 154/151                | K          | 16              | 3750/3450    | 830           |
|             | 8.50         | 20PR       | 156/153                | K          | 16              | 4000/3650    | 900           |
| 12.00R24    | 8.50         | 20PR       | 160/157                | K          | 15.5            | 4500/4125    | 900           |
| 315/80R22.5 | 9.00         | 20PR       | 157/154                | K          | 15              | 4125/3750    | 830           |





# SP329



- ◊ Large pattern and open shoulder design, the off-road performance is more excellent
- ◊ The cutting-resistant tread formula improves the puncture-resistance and cutting ability; the use of low thermal base glue is more conducive to heat dissipation and ensures good high-speed performance
- ◊ The bottom of the groove is designed with "peak-valley" to prevent stones from embedding, and the self-cleaning ability is excellent
- ◊ Tubeless design is suitable for vehicles with a central inflation and deflation system
- ◊ Applicable models: off-road transport vehicles, wheeled armored vehicles, self-propelled artillery, etc
- ◊ Applicable road conditions: cross country road, highway

| SIZE         | STANDARD RIM | PLY RATING | LOAD INDEX SINGLE/DUAL | SPEED RATE | TREAD DEPTH(mm) | MAX LOAD(kg) | PRESSURE(kpa) |
|--------------|--------------|------------|------------------------|------------|-----------------|--------------|---------------|
| 255/100R16   | 6.50H        | 8PR        | 126/124                | K          | 15.9            | 1700/1600    | 450           |
| 335/80R20MPT | 11.00        | 18PR       | 149                    | K          | 16.9            | 3250         | 650           |
| 12.5R20      | 11.00        | 18PR       | 145                    | L          | 16.9            | 3250         | 650           |



# SP366



- ◊ Drive axle for on/off road conditions
- ◊ Deep and rigid block design for long life and good traction
- ◊ Cut resistance compound

| SIZE      | STANDARD RIM | PLY RATING | LOAD INDEX SINGLE/DUAL | SPEED RATE | TREAD DEPTH(mm) | MAX LOAD(kg) | PRESSURE(kpa) |
|-----------|--------------|------------|------------------------|------------|-----------------|--------------|---------------|
| 6.50R16LT | 5.5F         | 10PR       | 107/102                | L          | 9.7             | 975/850      | 560           |
| 7.00R16LT | 5.5F         | 12PR       | 115/110                | M          | 9.7             | 1215/1060    | 670           |
| 7.50R16LT | 6.0G         | 14PR       | 122/118                | L          | 10.5            | 1500/1320    | 770           |



# SP335



- ◊ Used in all wheel position of coach and van
- ◊ Good ground grasping capacity and sideslip resistance. Low shock when running
- ◊ Both suitable for rough road and highway

| SIZE      | STANDARD RIM | PLY RATING | LOAD INDEX SINGLE/DUAL | SPEED RATE | TREAD DEPTH(mm) | MAX LOAD(kg) | PRESSURE(kpa) |
|-----------|--------------|------------|------------------------|------------|-----------------|--------------|---------------|
| 6.50R16LT | 5.5F         | 12PR       | 110/105                | K          | 10.5            | 1060/925     | 670           |
| 7.00R16LT | 5.5F         | 14PR       | 118/114                | K          | 11.5            | 1320/1180    | 770           |



# SP395



- ◊ New low heat tire shoulder designed to provide excellent high-speed performance
- ◊ Widened tread design effectively increases the wear volume and extends tire life
- ◊ New design of tread provides excellent wear resistance
- ◊ Optimized tread design effectively reduces rolling resistance
- ◊ Special design provide self cleaning function
- ◊ Unique tire shape and strong steel cord structure providing excellent durability performance

| SIZE        | STANDARD RIM | PLY RATING | LOAD INDEX SINGLE/DUAL | SPEED RATE | TREAD DEPTH(mm) | MAX LOAD(kg) | PRESSURE(kpa) |
|-------------|--------------|------------|------------------------|------------|-----------------|--------------|---------------|
| 385/65R22.5 | 11.75        | 20PR       | 160                    | K          | 16              | 4500         | 900           |



# SP339



- ◊ The all-wheel position tire of the warrior military off-road vehicle
- ◊ Self-cleaning function, more stinging resistance
- ◊ Uniform abrasion and durability

| SIZE            | STANDARD RIM | PLY RATING | LOAD INDEX SINGLE/DUAL | SPEED RATE | TREAD DEPTH(mm) | MAX LOAD(kg) | PRESSURE(kpa) |
|-----------------|--------------|------------|------------------------|------------|-----------------|--------------|---------------|
| 37×12.50R16.5LT | 8.25         | 10PR       | 134                    | N          | 14.1            | 2120         | 450           |



# SP396



- ◊ New low heat tire shoulder designed to provide excellent high-speed performance
- ◊ Widened tread design effectively increases the wear volume and extends tire life
- ◊ New design of tread provides excellent wear resistance
- ◊ Optimized tread design effectively reduces rolling resistance
- ◊ Special design provide self cleaning function
- ◊ Unique tire shape and strong steel cord structure providing excellent durability performance

| SIZE        | STANDARD RIM | PLY RATING | LOAD INDEX SINGLE/DUAL | SPEED RATE | TREAD DEPTH(mm) | MAX LOAD(kg) | PRESSURE(kpa) |
|-------------|--------------|------------|------------------------|------------|-----------------|--------------|---------------|
| 385/65R22.5 | 11.75        | 20PR       | 160                    | K          | 16              | 4500         | 900           |



# SP397



- ◊.New low heat tire shoulder designed to provide excellent high- speed performance
- ◊.Widened tread design effectively increases the wear volume and extends tire life
- ◊.New design of tread provides excellent wear resistance
- ◊.Optimized tread design effectively reduces rolling resistance
- ◊.Special design provide self cleaning function
- ◊.Unique tire shape and strong steel cord structure providing excellent durability performance

| SIZE        | STANDARD RIM | PLY RATING | LOAD INDEX SINGLE/DUAL | SPEED RATE | TREAD DEPTH(mm) | MAX LOAD(kg) | PRESSURE(kpa) |
|-------------|--------------|------------|------------------------|------------|-----------------|--------------|---------------|
| 385/65R22.5 | 11.75        | 20PR       | 160                    | K          | 16.5            | 4500         | 900           |



# SP398



- ◊.Excellent load capacity and high speed capacity
- ◊.Good wear-resistant, high traction power, excellent anti-puncture
- ◊.Suitable for all kinds of road conditions

| SIZE        | STANDARD RIM | PLY RATING | LOAD INDEX SINGLE/DUAL | SPEED RATE | TREAD DEPTH(mm) | MAX LOAD(kg) | PRESSURE(kpa) |
|-------------|--------------|------------|------------------------|------------|-----------------|--------------|---------------|
| 11R22.5     | 8.25         | 18PR       | 151/148                | K          | 17              | 3450/3150    | 930           |
| 11R22.5     | 8.25         | 20PR       | 152/149                | M          | 17              | 3550/3250    | 930           |
| 12R22.5     | 9.00         | 18PR       | 152/149                | K          | 17              | 3550/3250    | 930           |
| 13R22.5     | 9.75         | 18PR       | 154/151                | K          | 18.5            | 3750/3450    | 830           |
| 295/80R22.5 | 9.00         | 18PR       | 152/149                | K          | 17              | 3550/3250    | 900           |
| 315/80R22.5 | 9.00         | 20PR       | 157/154                | K          | 17              | 4125/3750    | 900           |



# SPX501



- ◊.Wide tread cap with reinforced carcass and bead structure design provides tires with outstanding bearing performance.
- ◊.The new formula design endows tire with good performance on bad roads
- ◊.Big block shoulder pattern design design endows excellent grip performance . Open shoulder design greatly reduces the tire production.

| SIZE      | STANDARD RIM | PLY RATING | LOAD INDEX SINGLE/DUAL | SPEED RATE | TREAD DEPTH(mm) | MAX LOAD(kg) | PRESSURE(kpa) |
|-----------|--------------|------------|------------------------|------------|-----------------|--------------|---------------|
| 8.25R20   | 6.50         | 16PR       | 139/137                | K          | 15.6            | 2430/2300    | 930           |
| 10.00R20  | 7.50         | 18PR       | 149/146                | K          | 16.4/16.9       | 3250/3000    | 930           |
| 11.00R20  | 8.00         | 18PR       | 152/149                | K          | 16.4/16.9       | 3550/3250    | 930           |
| 12.00R20  | 8.50         | 20PR       | 156/153                | K          | 16.4/16.9       | 4000/3650    | 900           |
| 325/95R24 | 9.00         | 20PR       | 162/160                | K          | 15.9            | 4750/4500    | 850           |



# SP502



- ◊.Reasonable design of pattern distribution, increase the rigidity of tire shoulder and improve the wear resistance
- ◊.Wavy groove design of shoulder pattern to restrain clipping
- ◊.The optimized design of the tire structure makes the tire stress distribution more reasonable and more suitable for trailer wheel
- ◊.Ultra deep pattern design give the tire long wear life

| SIZE      | STANDARD RIM | PLY RATING | LOAD INDEX SINGLE/DUAL | SPEED RATE | TREAD DEPTH(mm) | MAX LOAD(kg) | PRESSURE(kpa) |
|-----------|--------------|------------|------------------------|------------|-----------------|--------------|---------------|
| 7.50R16LT | 6.00G        | 16PR       | 125/121                | M          | 12.6            | 1650/1450    | 870           |
| 7.50R20   | 6.00         | 16PR       | 133/131                | M          | 14.1            | 2060/1950    | 930           |



# SP503



- ◊.Medium and long-distance trailer wheels use wide-base tires for high-speed driving
- ◊.Uniform wear and long life
- ◊.Excellent safety performance

| SIZE        | STANDARD RIM | PLY RATING | LOAD INDEX SINGLE/DUAL | SPEED RATE | TREAD DEPTH(mm) | MAX LOAD(kg) | PRESSURE(kpa) |
|-------------|--------------|------------|------------------------|------------|-----------------|--------------|---------------|
| 425/65R22.5 | 13.00        | 20PR       | 165                    | J          | 15.9            | 5150         | 825           |



# SP505



- ◊.The special pattern design provides excellent driving and grip on the compound road surface, and reduces the heat generation of tire shoulder.
- ◊.Wider driving surface design makes tires more durable. Strengthen the tire ring design, provides the outstanding loading capacity of tires;
- ◊.The new formulation design ensures the adaptability of the tires in various pavement environments;

| SIZE      | STANDARD RIM | PLY RATING | LOAD INDEX SINGLE/DUAL | SPEED RATE | TREAD DEPTH(mm) | MAX LOAD(kg) | PRESSURE(kpa) |
|-----------|--------------|------------|------------------------|------------|-----------------|--------------|---------------|
| 325/95R24 | 9.00         | 20PR       | 162/160                | K          | 15.9            | 4750/4500    | 850           |



# SP506



- ◊.The ribbed design provides excellent handling and drainage performance; the special shoulder design provides excellent transformation performance
- ◊.Adopt high wear-resistant formula to ensure tire wear resistance and improve service life.
- ◊.Special band design improves crown rigidity and reduces rolling resistance to meet the requirements of fuel saving and environmental protection

| SIZE        | STANDARD RIM | PLY RATING | LOAD INDEX SINGLE/DUAL | SPEED RATE | TREAD DEPTH(mm) | MAX LOAD(kg) | PRESSURE(kpa) |
|-------------|--------------|------------|------------------------|------------|-----------------|--------------|---------------|
| 275/80R22.5 | 8.25         | 18PR       | 149/146                | M          | 14.6            | 3250/3000    | 900           |
| 445/65R22.5 | 13.00        | 20PR       | 168                    | J          | 19.5            | 5600         | 830           |



# SPX509



- ◊.Wide tread cap with reinforced carcass and bead structure design provides tires with outstanding bearing performance.
- ◊.Deeper pattern depth design with super wear resistance formula greatly improve shearing resistance performance and puncture resistance performance More Suitable For hard Mine
- ◊.Thickened sidewall design effectively prevents twin tire from clamping the stone Special tread pattern groove design can effectively prevent tires form calmping the stone

| SIZE     | STANDARD RIM | PLY RATING | LOAD INDEX SINGLE/DUAL | SPEED RATE | TREAD DEPTH(mm) | MAX LOAD(kg) | PRESSURE(kpa) |
|----------|--------------|------------|------------------------|------------|-----------------|--------------|---------------|
| 10.00R20 | 7.50         | 18PR       | 149/146                | F          | 22.4            | 3250/3000    | 930           |
| 11.00R20 | 8.00         | 18PR       | 152/149                | F          | 24.7            | 3550/3250    | 930           |
| 12.00R20 | 8.50         | 18PR       | 154/151                | F          | 24.7            | 3750/3450    | 830           |
|          | 8.50         | 20PR       | 156/153                | F          | 24.7            | 4000/3650    | 900           |



# SP507



- ◊.Medium and long-distance wide base tyre for all wheel
- ◊.Higher mileage and longer service life
- ◊.Excellent anti-clamping stone performance

| SIZE        | STANDARD RIM | PLY RATING | LOAD INDEX SINGLE/DUAL | SPEED RATE | TREAD DEPTH(mm) | MAX LOAD(kg) | PRESSURE(kpa) |
|-------------|--------------|------------|------------------------|------------|-----------------|--------------|---------------|
| 385/65R22.5 | 11.75        | 24PR       | 164                    | J          | 17.4            | 5000         | 930           |



# SP510



- ◊.Medium and long-distance steer / trailer wheel
- ◊.Higher mileage and longer service life
- ◊.Excellent high-speed performance
- ◊.Good self-cleaning ability

| SIZE        | STANDARD RIM | PLY RATING | LOAD INDEX SINGLE/DUAL | SPEED RATE | TREAD DEPTH(mm) | MAX LOAD(kg) | PRESSURE(kpa) |
|-------------|--------------|------------|------------------------|------------|-----------------|--------------|---------------|
| 225/80R17.5 | 6.75         | 16PR       | 123/122                | L          | 15.6            | 1550/1500    | 700           |



# SPX508



- ◊.Wide tread cap with reinforced carcass and bead structure design provides tires with outstanding bearing performance
- ◊.Mixed pattern design and special formula ensure excellent use performance on short distance mining roads
- ◊.The special pattern block and super deep pattern design provides good driving performance, and it can be used in many kinds of road with longer mileage

| SIZE     | STANDARD RIM | PLY RATING | LOAD INDEX SINGLE/DUAL | SPEED RATE | TREAD DEPTH(mm) | MAX LOAD(kg) | PRESSURE(kpa) |
|----------|--------------|------------|------------------------|------------|-----------------|--------------|---------------|
| 10.00R20 | 7.50         | 18PR       | 149/146                | J          | 17.9            | 3250/3000    | 930           |
| 11.00R20 | 8.00         | 18PR       | 152/149                | K          | 17.9            | 3550/3250    | 930           |
| 12.00R20 | 8.50         | 20PR       | 156/153                | J          | 17.9            | 4000/3650    | 900           |



# SP511



- ◊.Excellent stability
- ◊.Longer running mileage, more durable
- ◊.Unique anti-prick technology

| SIZE    | STANDARD RIM | PLY RATING | LOAD INDEX SINGLE/DUAL | SPEED RATE | TREAD DEPTH(mm) | MAX LOAD(kg) | PRESSURE(kpa) |
|---------|--------------|------------|------------------------|------------|-----------------|--------------|---------------|
| 11R22.5 | 8.25         | 18PR       | 146/143                | M          | 14.1            | 3450/3150    | 930           |



# SP512



- ◊.Medium and long distance driving wheel use
- ◊.Super long mileage and longer service life
- ◊.Fuel saving and environmental protection
- ◊.Good self-cleaning property

| SIZE    | STANDARD RIM | PLY RATING | LOAD INDEX SINGLE/DUAL | SPEED RATE | TREAD DEPTH(mm) | MAX LOAD(kg) | PRESSURE(kpa) |
|---------|--------------|------------|------------------------|------------|-----------------|--------------|---------------|
| 11R22.5 | 8.25         | 18PR       | 151/148                | K          | 19.4            | 3450/3150    | 930           |



# SPX601



- ◊.Medium and long-distance steer/trailer wheel
- ◊.Higher mileage and longer service life
- ◊.Excellent high-speed performance
- ◊.Good self-cleaning ability

| SIZE        | STANDARD RIM | PLY RATING | LOAD INDEX SINGLE/DUAL | SPEED RATE | TREAD DEPTH(mm) | MAX LOAD(kg) | PRESSURE(kpa) |
|-------------|--------------|------------|------------------------|------------|-----------------|--------------|---------------|
| 295/80R22.5 | 9.00         | 20PR       | 154/149                | L          | 16.4            | 3750/3250    | 850           |
| 315/80R22.5 | 9.00         | 20PR       | 157/154                | L          | 15.6            | 4125/3750    | 900           |



# SP516



- ◊.Vertical pattern design on tread region reduces the later sliding , improve the tire operation performance , Steering performance and drainage performance
- ◊.The center pattern with Multi incision design effectively reduces the irregular wear of crown and improve the tire grip force
- ◊.Special formula for high heat dissipation and high abrasion resistance compound affords both greater mileage and longer service life.

| SIZE        | STANDARD RIM | PLY RATING | LOAD INDEX SINGLE/DUAL | SPEED RATE | TREAD DEPTH(mm) | MAX LOAD(kg) | PRESSURE(kpa) |
|-------------|--------------|------------|------------------------|------------|-----------------|--------------|---------------|
| 215/75R17.5 | 6.00         | 16PR       | 135/133                | K          | 12.1            | 2180/2060    | 865           |
| 235/75R17.5 | 6.75         | 18PR       | 143/141                | K          | 12.1            | 2725/2575    | 865           |
| 265/70R19.5 | 7.50         | 16PR       | 140/138                | M          | 12.6            | 2500/2360    | 775           |



# SP639



- ◊.Vertical groove patten design stops anti-slip effectively,and offer excellent handling performance
- ◊.Safe and advanced pattern design reduce rolling resistance and ensure tire fuel economy and high speed performance
- ◊.Latest anti-wear formulation ensure excellent anti-wear performance

| SIZE        | STANDARD RIM | PLY RATING | LOAD INDEX SINGLE/DUAL | SPEED RATE | TREAD DEPTH(mm) | MAX LOAD(kg) | PRESSURE(kpa) |
|-------------|--------------|------------|------------------------|------------|-----------------|--------------|---------------|
| 11R/22.5    | 8.25         | 16PR       | 146/143                | M          | 15.5            | 3000/2725    | 830           |
| 11R/24.5    | 8.25         | 16PR       | 149/146                | M          | 15.5            | 3250/3000    | 830           |
| 285/75R24.5 | 8.25         | 16PR       | 147/144                | M          | 15.5            | 3075/2800    | 830           |
| 295/75R22.5 | 9.00         | 16PR       | 146/143                | M          | 15.5            | 3000/2725    | 830           |



# SP601



- ◊.Specially designed for long distance transportation vehicles on good road conditions.suitable for all wheel positions of middle and long distance coach,steering wheel position of middle and long distance trucks.
- ◊.Comfortable and safer driving experience;longer mileage

| SIZE        | STANDARD RIM | PLY RATING | LOAD INDEX SINGLE/DUAL | SPEED RATE | TREAD DEPTH(mm) | MAX LOAD(kg) | PRESSURE(kpa) |
|-------------|--------------|------------|------------------------|------------|-----------------|--------------|---------------|
| 225/80R17.5 | 6.75         | 16PR       | 123/122                | L          | 15.6            | 1550/1500    | 700           |
| 315/80R22.5 | 9.00         | 20PR       | 157/154                | K          | 14.5            | 4125/3750    | 830           |



# SP831



- ◊.Special desgin for uni- skidding and perfect handling
- ◊.Central tread ensure excellent gripping and reduce rolling resistance
- ◊.Unique technical formula improve the wear-resistance and stability

| SIZE        | STANDARD RIM | PLY RATING | LOAD INDEX SINGLE/DUAL | SPEED RATE | TREAD DEPTH(mm) | MAX LOAD(kg) | PRESSURE(kpa) |
|-------------|--------------|------------|------------------------|------------|-----------------|--------------|---------------|
| 11R22.5     | 8.25         | 16PR       | 146/143                | M          | 10.5            | 3000/2725    | 830           |
| 11R/24.5    | 8.25         | 16PR       | 149/146                | M          | 10.5            | 3250/3000    | 830           |
| 285/75R24.5 | 8.25         | 16PR       | 147/144                | M          | 10.5            | 3075/2800    | 830           |
| 295/75R22.5 | 9.00         | 16PR       | 146/143                | M          | 10.5            | 3000/2725    | 830           |



## SP603



- ◊ Longer running mileage, longer service life
- ◊ Green, fuel-efficient
- ◊ Load utilization optimization

| SIZE        | STANDARD RIM | PLY RATING | LOAD INDEX SINGLE/DUAL | SPEED RATE | TREAD DEPTH(mm) | MAX LOAD(kg) | PRESSURE(kpa) |
|-------------|--------------|------------|------------------------|------------|-----------------|--------------|---------------|
| 295/80R22.5 | 9.00         | 18PR       | 152/149                | K          | 15.00           | 3550/3280    | 900           |



## SP832



- ◊ Special design for anti-skidding and perfect handling
- ◊ Central tread ensure excellent gripping and reduce rolling resistance
- ◊ Unique technical formula improve the wear-resistance and stability

| SIZE    | STANDARD RIM | PLY RATING | LOAD INDEX SINGLE/DUAL | SPEED RATE | TREAD DEPTH(mm) | MAX LOAD(kg) | PRESSURE(kpa) |
|---------|--------------|------------|------------------------|------------|-----------------|--------------|---------------|
| 11R22.5 | 8.25         | 16PR       | 146/143                | M          | 10.5            | 3000/2725    | 830           |



## SP901



- ◊ Suitable for all wheels
- ◊ Good traction and braking performance
- ◊ Good durability, anti-puncturing
- ◊ Suitable for good and bad road conditions

| SIZE        | STANDARD RIM | PLY RATING | LOAD INDEX SINGLE/DUAL | SPEED RATE | TREAD DEPTH(mm) | MAX LOAD(kg) | PRESSURE(kpa) |
|-------------|--------------|------------|------------------------|------------|-----------------|--------------|---------------|
| 7.50R16LT   | 6.00G        | 14PR       | 122/118                | K          | 12.0            | 1500/1320    | 770           |
| 8.25R16LT   | 6.50H        | 16PR       | 128/124                | K          | 13.0            | 1800/1600    | 770           |
| 8.25R20     | 6.50         | 16PR       | 139/137                | K          | 15.5            | 2430/2300    | 900           |
| 9.00R20     | 7.00         | 16PR       | 144/142                | K          | 15.5            | 2800/2650    | 900           |
| 10.00R20    | 7.50         | 18PR       | 149/146                | K          | 16.5            | 3250/3000    | 930           |
| 11.00R20    | 8.00         | 18PR       | 152/149                | K          | 17.0            | 3550/3250    | 930           |
| 12.00R20    | 8.50         | 20PR       | 156/153                | K          | 17.5            | 4000/3650    | 900           |
| 12.00R24    | 8.50         | 20PR       | 160/157                | K          | 17.5            | 4500/4125    | 900           |
| 11R22.5     | 8.25         | 18PR       | 151/148                | K          | 15.5            | 3450/3150    | 930           |
| 12R22.5     | 9.00         | 18PR       | 152/149                | K          | 15.5            | 3550/3250    | 930           |
| 13R22.5     | 9.75         | 18PR       | 154/151                | K          | 15.5            | 3750/3450    | 830           |
| 295/80R22.5 | 9.00         | 18PR       | 152/149                | K          | 15.5            | 3550/3250    | 900           |



## SP902



- ◊ Used for driving wheel
- ◊ Widen tread design, can increase the contact area of tread and ground grasping capacity
- ◊ Transverse pattern design, supply good self-cleaning

| SIZE        | STANDARD RIM | PLY RATING | LOAD INDEX SINGLE/DUAL | SPEED RATE | TREAD DEPTH(mm) | MAX LOAD(kg) | PRESSURE(kpa) |
|-------------|--------------|------------|------------------------|------------|-----------------|--------------|---------------|
| 11R22.5     | 8.25         | 18PR       | 151/148                | K          | 18.5            | 3450/3150    | 930           |
| 12R22.5     | 9.00         | 18PR       | 152/149                | K          | 18.5            | 3550/3250    | 930           |
| 13R22.5     | 9.75         | 18PR       | 154/151                | K          | 18.5            | 3750/3450    | 830           |
| 295/80R22.5 | 9.00         | 18PR       | 152/149                | K          | 18.5            | 3550/3250    | 900           |
| 315/60R22.5 | 9.75         | 18PR       | 152/148                | L          | 17.9            | 3550/3150    | 900           |
| 315/80R22.5 | 9.00         | 20PR       | 157/154                | K          | 18.5            | 4125/3750    | 900           |



## SP903



- ◊ Used for driving wheel
- ◊ For good road and mixed road condition
- ◊ Widen tread design, can increase tread contact area and ground grasping capacity

| SIZE        | STANDARD RIM | PLY RATING | LOAD INDEX SINGLE/DUAL | SPEED RATE | TREAD DEPTH(mm) | MAX LOAD(kg) | PRESSURE(kpa) |
|-------------|--------------|------------|------------------------|------------|-----------------|--------------|---------------|
| 11R22.5     | 8.25         | 16PR       | 146/143                | L          | 20.5            | 3000/2725    | 830           |
| 11R24.5     | 8.25         | 16PR       | 149/146                | L          | 20.5            | 3250/3000    | 830           |
| 285/75R24.5 | 8.25         | 16PR       | 147/144                | L          | 20.5            | 3075/2800    | 830           |
| 295/75R22.5 | 9.00         | 16PR       | 146/143                | L          | 20.5            | 3000/2725    | 830           |



## SP905



- ◊ New tubeless tyre pattern
- ◊ Good traction and braking performance
- ◊ Reduce heat-producing, enhance the service durability
- ◊ Strengthened steel belts protect the tyre body from puncture

| SIZE        | STANDARD RIM | PLY RATING | LOAD INDEX SINGLE/DUAL | SPEED RATE | TREAD DEPTH(mm) | MAX LOAD(kg) | PRESSURE(kpa) |
|-------------|--------------|------------|------------------------|------------|-----------------|--------------|---------------|
| 385/65R22.5 | 11.75        | 20PR       | 160                    | K          | 16              | 4500         | 900           |



# SP906



- ◊.Specially designed for long distance transportayion vehicles on good road conditions.suitable for all wheel positions of middle and long distance coach,steering wheel position of middle and long distance trucks.
- ◊.Comfortable and safer driving experience;longer mileage

| SIZE        | STANDARD RIM | PLY RATING | LOAD INDEX SINGLE/DUAL | SPEED RATE | TREAD DEPTH(mm) | MAX LOAD(kg) | PRESSURE(kpa) |
|-------------|--------------|------------|------------------------|------------|-----------------|--------------|---------------|
| 315/80R22.5 | 9.00         | 20PR       | 157/154                | K          | 14.5            | 4125/3750    | 830           |



# SP907



- ◊.Used in all wheel position of coach and van
- ◊.Good ground grasping capacity and sideslip resistance. Low shock when running
- ◊.Both suitable for rough road and highway

| SIZE      | STANDARD RIM | PLY RATING | LOAD INDEX SINGLE/DUAL | SPEED RATE | TREAD DEPTH(mm) | MAX LOAD(kg) | PRESSURE(kpa) |
|-----------|--------------|------------|------------------------|------------|-----------------|--------------|---------------|
| 7.50R16LT | 6.00G        | 14PR       | 122/118                | K          | 12              | 1500/1320    | 770           |
| 8.25R16LT | 6.50H        | 16PR       | 128/124                | K          | 13              | 1800/1600    | 770           |
| 10.00R20  | 7.50         | 18PR       | 149/146                | K          | 16              | 3250/3000    | 930           |
| 11.00R20  | 8.00         | 18PR       | 152/149                | K          | 16.5            | 3550/3250    | 930           |
| 12.00R20  | 8.50         | 18PR       | 154/151                | K          | 17.5            | 3750/3450    | 830           |
|           | 8.50         | 20PR       | 156/153                | K          | 17.5            | 4000/3650    | 900           |
| 12.00R24  | 8.50         | 20PR       | 160/157                | K          | 16              | 4500/4125    | 900           |



# SP908



- ◊.With perfect driving performance, used for driving wheel
- ◊.Good ground grasping capability, excellent performance
- ◊.Suitable for rough road and mining road condition

| SIZE      | STANDARD RIM | PLY RATING | LOAD INDEX SINGLE/DUAL | SPEED RATE | TREAD DEPTH(mm) | MAX LOAD(kg) | PRESSURE(kpa) |
|-----------|--------------|------------|------------------------|------------|-----------------|--------------|---------------|
| 7.50R16LT | 6.00H        | 14PR       | 122/118                | K          | 15              | 1500/1320    | 770           |
| 8.25R16LT | 6.50H        | 16PR       | 128/124                | K          | 16.5            | 1800/1600    | 770           |
| 8.25R20   | 6.50         | 16PR       | 139/137                | K          | 16.5            | 2430/2300    | 930           |
| 9.00R20   | 7.00         | 16PR       | 152/149                | K          | 16.5            | 2800/2650    | 900           |
| 10.00R20  | 7.50         | 18PR       | 149/146                | K          | 18.5            | 3250/3000    | 930           |
| 11.00R20  | 8.00         | 18PR       | 152/149                | K          | 19.5            | 3550/3250    | 930           |
| 12.00R20  | 8.50         | 18PR       | 154/151                | K          | 20.5            | 3750/3450    | 830           |
|           | 8.50         | 20PR       | 156/153                | K          | 20.5            | 4000/3650    | 900           |



# SP909



- ◊.Sturdy tread pattern,suitable for bad road condition
- ◊.Supply excellent traction and driving power
- ◊.Ultra-deep tread depth improve 50% service life
- ◊.Open tire shoulder design, good heat dispersion and self-cleaning
- ◊.Good durability, anti-fatigue properties
- ◊.Suitable for mining /construction bad off road condition

| SIZE        | STANDARD RIM | PLY RATING | LOAD INDEX SINGLE/DUAL | SPEED RATE | TREAD DEPTH(mm) | MAX LOAD(kg) | PRESSURE(kpa) |
|-------------|--------------|------------|------------------------|------------|-----------------|--------------|---------------|
| 10.00R20    | 7.50         | 18PR       | 149/146                | G          | 18.0            | 3250/3000    | 930           |
| 11.00R20    | 8.00         | 18PR       | 152/149                | G          | 20.5            | 3550/3250    | 930           |
| 12.00R20    | 8.50         | 18PR       | 154/151                | G          | 22.5            | 3750/3450    | 830           |
|             | 8.50         | 20PR       | 156/153                | G          | 22.5            | 4000/3650    | 900           |
|             | 8.50         | 22PR       | 158/155                | G          | 22.5            | 4250/3875    | 970           |
| 11R22.5     | 8.25         | 18PR       | 151/148                | G          | 20.5            | 3450/3150    | 930           |
| 12R22.5     | 9.00         | 18PR       | 152/149                | G          | 20.5            | 3550/3250    | 930           |
| 13R22.5     | 9.75         | 18PR       | 154/151                | G          | 20.5            | 3750/3450    | 830           |
| 275/70R22.5 | 8.25         | 16PR       | 148/145                | G          | 20.5            | 3150/2900    | 900           |
| 295/80R22.5 | 9.00         | 18PR       | 152/149                | G          | 20.5            | 3550/3250    | 900           |
| 315/80R22.5 | 9.00         | 20PR       | 157/154                | G          | 20.5            | 4125/3750    | 900           |



# SP910



- ◊.Sturdy tread pattern, suitable for bad road condition
- ◊.Supply excellent traction and driving power
- ◊.Ultra-deep tread depth improve 50% service life
- ◊.Open tire shoulder design, good heat dispersion and self-cleaning
- ◊.Good durability, anti-fatigue properties
- ◊.Suitable for mining /construction bad off road condition

| SIZE    | STANDARD RIM | PLY RATING | LOAD INDEX SINGLE/DUAL | SPEED RATE | TREAD DEPTH(mm) | MAX LOAD(kg) | PRESSURE(kpa) |
|---------|--------------|------------|------------------------|------------|-----------------|--------------|---------------|
| 11R22.5 | 8.25         | 18PR       | 151/148                | G          | 20.5            | 3450/3150    | 930           |



# SP915



- ◊.Vertical deep groove design can provide excellent driving and braking force.
- ◊.The steel cord tire with high density. Good wear-resistant, high traction power. High load capacity.
- ◊.Can be used for mixed road condition.
- ◊.Suitable for mining /construction bad off road condition

| SIZE     | STANDARD RIM | PLY RATING | LOAD INDEX SINGLE/DUAL | SPEED RATE | TREAD DEPTH(mm) | MAX LOAD(kg) | PRESSURE(kpa) |
|----------|--------------|------------|------------------------|------------|-----------------|--------------|---------------|
| 11.00R20 | 8.00         | 18PR       | 152/149                | G          | 20.5            | 3550/3250    | 930           |
| 12.00R20 | 8.50         | 20PR       | 156/153                | G          | 22.5            | 4000/3650    | 900           |



# SP911



- ◊ Vertical deep groove design can provide excellent driving and braking force.
- ◊ The steel cord tire with high density. Good wear-resistant, high traction power. High load capacity.
- ◊ Can be used for mixed road condition.
- ◊ Suitable for mining /construction bad off road condition

| SIZE        | STANDARD RIM | PLY RATING | LOAD INDEX SINGLE/DUAL | SPEED RATE | TREAD DEPTH(mm) | MAX LOAD(kg) | PRESSURE(kpa) |
|-------------|--------------|------------|------------------------|------------|-----------------|--------------|---------------|
| 10.00R20    | 7.50         | 18PR       | 149/146                | G          | 18.0            | 3250/3000    | 930           |
| 11.00R20    | 8.00         | 18PR       | 152/149                | G          | 20.5            | 3550/3250    | 930           |
| 12.00R20    | 8.50         | 20PR       | 156/153                | G          | 22.5            | 4000/3650    | 900           |
| 11R/22.5    | 8.25         | 18PR       | 151/148                | G          | 20.5            | 3450/3150    | 930           |
| 12R22.5     | 9.00         | 18PR       | 152/149                | G          | 20.5            | 3550/3250    | 930           |
| 13R22.5     | 9.75         | 18PR       | 154/151                | G          | 20.5            | 3750/3450    | 830           |
| 295/80R22.5 | 9.00         | 18PR       | 152/149                | G          | 20.5            | 3550/3250    | 900           |
| 315/80R22.5 | 9.00         | 20PR       | 157/154                | G          | 20.5            | 4125/3750    | 900           |



# SP912



- ◊ Designed for construction and mining road, and short haul
- ◊ Special deep pattern improves the traction and braking performance
- ◊ Reduce heat-producing, enhance the service durability
- ◊ Strengthened steel belts protect the tyre body from puncture
- ◊ Extra deep tread pattern can increase mileage 20%

| SIZE      | STANDARD RIM | PLY RATING | LOAD INDEX SINGLE/DUAL | SPEED RATE | TREAD DEPTH(mm) | MAX LOAD(kg) | PRESSURE(kpa) |
|-----------|--------------|------------|------------------------|------------|-----------------|--------------|---------------|
| 7.50R16LT | 6.00H        | 14PR       | 122/118                | K          | 14.5            | 1500/1320    | 770           |
| 8.25R16LT | 6.50H        | 16PR       | 128/124                | K          | 15.0            | 1800/1600    | 770           |
| 8.25R20   | 6.50H        | 16PR       | 139/137                | K          | 16.5            | 2430/2300    | 930           |
| 9.00R20   | 7.00         | 16PR       | 144/142                | K          | 16.5            | 2800/2650    | 900           |
| 10.00R20  | 7.50         | 18PR       | 149/146                | K          | 18.5            | 3250/3000    | 930           |
| 11.00R20  | 8.00         | 18PR       | 152/149                | K          | 20.5            | 3550/3250    | 930           |
| 12.00R20  | 8.50         | 18PR       | 154/151                | J          | 21.5            | 3750/3450    | 830           |
|           | 8.50         | 20PR       | 156/153                | J          | 21.5            | 4000/3650    | 900           |
| 12R22.5   | 9.00         | 18PR       | 152/149                | K          | 22.0            | 3550/3250    | 930           |



# SP913



- ◊ Suitable for driving wheel position of vans on poor road conditions
- ◊ Streamline pattern combine with rigid tread chunks provide excellent traction and driving performance
- ◊ Deeper tread pattern design offers enhanced tire mileage for better economy
- ◊ Reinforced tread block enhances its anti-rupture performance;effectively reducing cracks in groove bottom,thereby resulting in a safer driving experience

| SIZE        | STANDARD RIM | PLY RATING | LOAD INDEX SINGLE/DUAL | SPEED RATE | TREAD DEPTH(mm) | MAX LOAD(kg) | PRESSURE(kpa) |
|-------------|--------------|------------|------------------------|------------|-----------------|--------------|---------------|
| 315/80R22.5 | 9.00         | 20PR       | 157/154                | K          | 17.5            | 4125/3750    | 830           |



# SP916



- ◊ New tubeless tyre pattern
- ◊ Good traction and braking performance
- ◊ Reduce heat-producing, enhance the service durability
- ◊ Strengthened steel belts protect the tyre body from puncture

| SIZE    | STANDARD RIM | PLY RATING | LOAD INDEX SINGLE/DUAL | SPEED RATE | TREAD DEPTH(mm) | MAX LOAD(kg) | PRESSURE(kpa) |
|---------|--------------|------------|------------------------|------------|-----------------|--------------|---------------|
| 11R22.5 | 8.25         | 18PR       | 151/148                | K          | 16.5            | 3450/3150    | 930           |
| 12R22.5 | 9.00         | 18PR       | 152/149                | K          | 16.5            | 3550/3250    | 930           |
| 13R22.5 | 9.75         | 18PR       | 154/151                | K          | 17.5            | 3750/3450    | 830           |



# SP917



- ◊ Sturdy tread pattern,suitable for bad road condition
- ◊ Supply excellent traction and driving power
- ◊ Ultra-deep tread depth improve 50% service life
- ◊ Open tire shoulder design, good heat dispersion and self-cleaning
- ◊ Good durability, anti-fatigue properties

| SIZE        | STANDARD RIM | PLY RATING | LOAD INDEX SINGLE/DUAL | SPEED RATE | TREAD DEPTH(mm) | MAX LOAD(kg) | PRESSURE(kpa) |
|-------------|--------------|------------|------------------------|------------|-----------------|--------------|---------------|
| 11R22.5     | 8.25         | 18PR       | 151/148                | K          | 20.5            | 3450/3150    | 930           |
| 12R22.5     | 9.00         | 18PR       | 152/149                | K          | 20.5            | 3550/3250    | 930           |
| 13R22.5     | 9.75         | 18PR       | 154/151                | K          | 20.5            | 3750/3450    | 830           |
| 275/70R22.5 | 8.25         | 16PR       | 148/145                | M          | 20.5            | 3150/2900    | 900           |
| 295/80R22.5 | 9.00         | 18PR       | 152/149                | K          | 20.5            | 3550/3250    | 900           |
| 315/80R22.5 | 9.00         | 20PR       | 157/154                | K          | 20.5            | 4125/3750    | 900           |



# SP918



- ◊ Vertical deep groove design can provide excellent driving and braking force.
- ◊ The steel cord tire with high density. Good wear-resistant, high traction power. High load capacity.
- ◊ Can be used for mixed road condition.
- ◊ Suitable for mining /construction bad off road condition

| SIZE     | STANDARD RIM | PLY RATING | LOAD INDEX SINGLE/DUAL | SPEED RATE | TREAD DEPTH(mm) | MAX LOAD(kg) | PRESSURE(kpa) |
|----------|--------------|------------|------------------------|------------|-----------------|--------------|---------------|
| 12.00R20 | 8.50         | 20PR       | 156/153                | G          | 22.5            | 4000/3650    | 900           |



# SP920



- ◊ Excellent driving and braking force, good steering stability on muddy roads.
- ◊ For good roads and mixed road condition.

| SIZE        | STANDARD RIM | PLY RATING | LOAD INDEX SINGLE/DUAL | SPEED RATE | TREAD DEPTH(mm) | MAX LOAD(kg) | PRESSURE(kpa) |
|-------------|--------------|------------|------------------------|------------|-----------------|--------------|---------------|
| 11R22.5     | 8.25         | 18PR       | 151/148                | K          | 18.5            | 3450/3150    | 900           |
| 12R22.5     | 9.00         | 18PR       | 152/149                | K          | 18.5            | 3550/3250    | 930           |
| 13R22.5     | 9.75         | 18PR       | 154/151                | K          | 18.5            | 3750/3450    | 830           |
| 295/80R22.5 | 9.00         | 18PR       | 152/149                | K          | 18.5            | 3550/3250    | 900           |
| 315/80R22.5 | 9.00         | 20PR       | 157/154                | K          | 18.5            | 4125/3750    | 900           |



# SP923



- ◊ Used in all wheel position of coach and van
- ◊ Good ground grasping capacity and sideslip resistance. Low shock when running
- ◊ Both suitable for rough road and highway

| SIZE     | STANDARD RIM | PLY RATING | LOAD INDEX SINGLE/DUAL | SPEED RATE | TREAD DEPTH(mm) | MAX LOAD(kg) | PRESSURE(kpa) |
|----------|--------------|------------|------------------------|------------|-----------------|--------------|---------------|
| 11.00R20 | 8.00         | 18PR       | 152/149                | K          | 15.5            | 3550/3250    | 930           |



# SP921



- ◊ Cross-winding groove tread design can reduce tire rolling resistance.
- ◊ Excellent ride comfort.
- ◊ Anti-skid, steering and excellent stability, low noise.
- ◊ Applicable to good road condition (highway).

| SIZE        | STANDARD RIM | PLY RATING | LOAD INDEX SINGLE/DUAL | SPEED RATE | TREAD DEPTH(mm) | MAX LOAD(kg) | PRESSURE(kpa) |
|-------------|--------------|------------|------------------------|------------|-----------------|--------------|---------------|
| 11R22.5     | 8.25         | 18PR       | 151/148                | K          | 17.0            | 3450/3150    | 930           |
| 12R22.5     | 9.00         | 18PR       | 152/149                | K          | 17.0            | 3550/3250    | 930           |
| 13R22.5     | 9.75         | 18PR       | 154/151                | K          | 18.5            | 3750/3450    | 830           |
| 295/80R22.5 | 9.00         | 18PR       | 152/149                | K          | 17.0            | 3550/3250    | 900           |
| 315/80R22.5 | 9.00         | 20PR       | 157/154                | K          | 17.0            | 4125/3750    | 900           |



# SP928



- ◊ Suitable for all wheel positions of middlelong-distance buses and steering wheel position of trucks on good road conditions.
- ◊ 4 linear grooves design provides excellent directional driving performance and prevents uneven tire wear.

| SIZE        | STANDARD RIM | PLY RATING | LOAD INDEX SINGLE/DUAL | SPEED RATE | TREAD DEPTH(mm) | MAX LOAD(kg) | PRESSURE(kpa) |
|-------------|--------------|------------|------------------------|------------|-----------------|--------------|---------------|
| 9.5R17.5    | 6.75         | 18PR       | 143/141                | J          | 14.5            | 2725/2575    | 875           |
| 265/70R19.5 | 7.50         | 18PR       | 143/141                | J          | 14.5            | 2727/2575    | 850           |
| 285/70R19.5 | 8.25         | 18PR       | 150/148                | J          | 14.5            | 3350/3150    | 900           |



# SP922



- ◊ Used in all wheel position of coach and van
- ◊ Good ground grasping capacity and sideslip resistance. Low shock when running
- ◊ Both suitable for rough road and highway

| SIZE     | STANDARD RIM | PLY RATING | LOAD INDEX SINGLE/DUAL | SPEED RATE | TREAD DEPTH(mm) | MAX LOAD(kg) | PRESSURE(kpa) |
|----------|--------------|------------|------------------------|------------|-----------------|--------------|---------------|
| 12.00R24 | 8.50         | 20PR       | 160/157                | K          | 15              | 4500/4125    | 900           |



# SP929



- ◊ Drive axle for on/off road conditions
- ◊ Deep and rigid block design for long life and good traction

| SIZE        | STANDARD RIM | PLY RATING | LOAD INDEX SINGLE/DUAL | SPEED RATE | TREAD DEPTH(mm) | MAX LOAD(kg) | PRESSURE(kpa) |
|-------------|--------------|------------|------------------------|------------|-----------------|--------------|---------------|
| 9.5R17.5    | 6.75         | 18PR       | 143/141                | J          | 16              | 2725/2575    | 875           |
| 265/70R19.5 | 7.50         | 18PR       | 143/141                | J          | 17.5            | 2727/2575    | 850           |
| 285/70R19.5 | 8.25         | 18PR       | 150/148                | J          | 17.0            | 3350/3150    | 900           |





# SP962

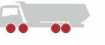


- ◊.Designed for construction and mining road,and short haul
- ◊.Special deep pattern improves the traction and braking performance
- ◊.Reduce heat-producing, enhance the service durability
- ◊.Strengthened steel belts protect the tyre body from puncture
- ◊.Extra deep tread pattern can increase mileage 20%

| SIZE      | STANDARD RIM | PLY RATING | LOAD INDEX SINGLE/DUAL | SPEED RATE | TREAD DEPTH(mm) | MAX LOAD(kg) | PRESSURE(kpa) |
|-----------|--------------|------------|------------------------|------------|-----------------|--------------|---------------|
| 7.00R16LT | 5.5F         | 12PR       | 115/110                | K          | 16              | 1215/1060    | 670           |
|           | 5.5F         | 14PR       | 118/114                | K          | 16              | 1320/1180    | 770           |
| 9.5R17.5  | 6.75         | 16PR       | 133/131                | L          | 15.9            | 2060/1950    | 830           |
|           | 6.75         | 18PR       | 142/141                | J          | 15.9            | 2725/2575    | 875           |
| 12.00R24  | 8.50         | 20PR       | 160/157                | K          | 18.5            | 4500/4125    | 900           |



# SP982



- ◊.Excellent driving performance and wear resistance
- ◊.Anti stone design
- ◊.Stronger bearing capacity
- ◊.Wide range of application

| SIZE     | STANDARD RIM | PLY RATING | LOAD INDEX SINGLE/DUAL | SPEED RATE | TREAD DEPTH(mm) | MAX LOAD(kg) | PRESSURE(kpa) |
|----------|--------------|------------|------------------------|------------|-----------------|--------------|---------------|
| 12.00R24 | 8.5          | 20         | 160/157                | K          | 18.0            | 4500/4125    | 900           |



# SP965



- ◊.Designed for construction and mining road, and short haul
- ◊.Special deep pattern improves the traction and braking performance
- ◊.Reduce heat-producing, enhance the service durability
- ◊.Strengthened steel belts protect the tyre body from puncture
- ◊.Extra deep tread pattern can increase mileage 20%

| SIZE    | STANDARD RIM | PLY RATING | LOAD INDEX SINGLE/DUAL | SPEED RATE | TREAD DEPTH(mm) | MAX LOAD(kg) | PRESSURE(kpa) |
|---------|--------------|------------|------------------------|------------|-----------------|--------------|---------------|
| 11R22.5 | 8.25         | 18PR       | 151/148                | K          | 18              | 3450/3150    | 930           |
| 12R22.5 | 9.00         | 18PR       | 152/149                | K          | 18              | 3550/3250    | 930           |
| 13R22.5 | 9.75         | 18PR       | 154/151                | K          | 18.5            | 3750/3450    | 830           |



# SP990



- ◊.Suitable for all wheels
- ◊.Good traction and braking performance
- ◊.Good durability, anti-puncturing
- ◊.Suitable for good and bad road conditions

| SIZE    | STANDARD RIM | PLY RATING | LOAD INDEX SINGLE/DUAL | SPEED RATE | TREAD DEPTH(mm) | MAX LOAD(kg) | PRESSURE(kpa) |
|---------|--------------|------------|------------------------|------------|-----------------|--------------|---------------|
| 12R22.5 | 9.00         | 18PR       | 152/149                | K          | 15.5            | 3550/3250    | 930           |



# SP981



- ◊.Sturdy tread pattern, suitable for bad road condition
- ◊.Supply excellent traction and driving power
- ◊.Ultra-deep tread depth improve 50% service life
- ◊.Open tire shoulder design, good heat dispersion and self-cleaning
- ◊.Good durability, anti-fatigue properties
- ◊.Suitable for mining /construction bad off road condition

| SIZE     | STANDARD RIM | PLY RATING | LOAD INDEX SINGLE/DUAL | SPEED RATE | TREAD DEPTH(mm) | MAX LOAD(kg) | PRESSURE(kpa) |
|----------|--------------|------------|------------------------|------------|-----------------|--------------|---------------|
| 12.00R24 | 8.50         | 20PR       | 160/157                | K          | 18.5            | 4500/4125    | 900           |
| 12.00R20 | 8.50         | 20PR       | 156/153                | G          | 22.5            | 4000/3650    | 900           |



# SP997



- ◊.Used for driving wheel
- ◊.For good road and mixed road condition
- ◊.Widen tread design ,can increase tread contact area and ground grasping capacity

| SIZE        | STANDARD RIM | PLY RATING | LOAD INDEX SINGLE/DUAL | SPEED RATE | TREAD DEPTH(mm) | MAX LOAD(kg) | PRESSURE(kpa) |
|-------------|--------------|------------|------------------------|------------|-----------------|--------------|---------------|
| 11R22.5     | 8.25         | 16PR       | 146/143                | L          | 20.5            | 3000/2725    | 830           |
| 11R24.5     | 8.25         | 16PR       | 149/146                | L          | 20.5            | 3250/3000    | 830           |
| 285/75R24.5 | 8.25         | 16PR       | 147/144                | L          | 20.5            | 3075/2800    | 830           |
| 295/75R22.5 | 9.00         | 16PR       | 146/143                | L          | 20.5            | 3000/2725    | 830           |



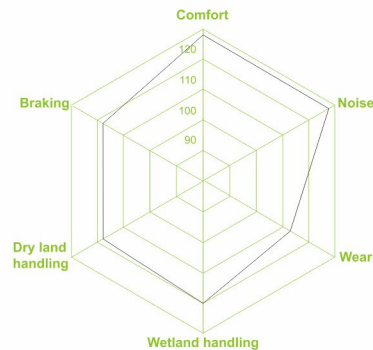
**GOOD TIRES  
JUST CHOOSE SPORTRAK BRAND**



# SP716/SP708/SP758

## ALL SEASON HP TIRE

### Performance Test



## SIZE RANGE

| SIZE       | LOAD INDEX & SPEED RATING | O.D (MM) | S.W (MM) | STANDARD RIM | U.T.Q.G | EUROPEAN LABEL | EUROPEAN LABEL | EUROPEAN LABEL | EUROPEAN LABEL |
|------------|---------------------------|----------|----------|--------------|---------|----------------|----------------|----------------|----------------|
| 155/65R13  | 73T                       | 532      | 157      | 4½J          | 380AA   |                |                |                |                |
| 155/70R13  | 75T                       | 548      | 157      | 4½J          | 380AA   |                |                |                |                |
| 155/80R13  | 79T                       | 578      | 157      | 4½J          | 380AA   | E              | C              | 70dB           | (C1)           |
| 165/65R13  | 77T/77H                   | 544      | 170      | 5J           | 380AA   |                |                |                |                |
| 165/70R13  | 79T/79H                   | 562      | 170      | 5J           | 380AA   | E              | C              | 70dB           | (C1)           |
| 165/80R13  | 83T                       | 594      | 165      | 4½J          | 380AA   | C              | C              | 70dB           | (C1)           |
| 175/60R13  | 77H                       | 540      | 177      | 5J           | 380AA   | E              | C              | 70dB           | (C1)           |
| 175/70R13  | 82T/82H                   | 576      | 177      | 5J           | 380AA   | E              | C              | 70dB           | (C1)           |
| 185/70R13  | 86T/86H                   | 590      | 189      | 5½J          | 380AA   |                |                |                |                |
| 155/65R14  | 75T/75H                   | 558      | 157      | 4½J          | 380AA   |                |                |                |                |
| 165/60R14  | 75T/75H                   | 554      | 170      | 5J           | 380AA   |                |                |                |                |
| 165/65R14  | 79H                       | 570      | 170      | 5J           | 380AA   | E              | C              | 70dB           | (C1)           |
| 165/70R14  | 81T                       | 588      | 170      | 5J           | 380AA   |                |                |                |                |
| 175/65R14  | 82T/82H                   | 584      | 177      | 5J           | 380AA   | E              | C              | 70dB           | (C1)           |
| 175/65R14  | 86T/86H XL                | 584      | 177      | 5J           | 380AA   |                |                |                |                |
| 175/70R14  | 84T/84H                   | 602      | 177      | 5J           | 380AA   | E              | C              | 70dB           | (C1)           |
| 185/60R14  | 82H                       | 578      | 189      | 5½J          | 380AA   | E              | C              | 70dB           | (C1)           |
| 185/65R14  | 86T/86H                   | 596      | 189      | 5½J          | 380AA   | C              | C              | 70dB           | (C1)           |
| 185/70R14  | 88T/88H                   | 616      | 189      | 5½J          | 380AA   | C              | C              | 70dB           | (C1)           |
| 195/60R14  | 86H                       | 590      | 201      | 6J           | 380AA   | C              | C              | 71dB           | (C1)           |
| 195/65R14  | 89H                       | 610      | 201      | 6J           | 380AA   | C              | C              | 71dB           | (C1)           |
| 195/70R14  | 91T/91H                   | 630      | 201      | 6J           | 380AA   | C              | C              | 71dB           | (C1)           |
| 195/70R14  | 95H XL                    | 630      | 201      | 6J           | 380AA   |                |                |                |                |
| 195/75R14  | 92T/92H                   | 648      | 196      | 5½J          | 380AA   |                |                |                |                |
| 205/60R14  | 88H                       | 602      | 209      | 6J           | 380AA   | E              | C              | 71dB           | (C1)           |
| 205/70R14  | 98T XL                    | 644      | 209      | 6J           | 380AA   | B              | C              | 72dB           | (C1)           |
| 165/65R15  | 81T/81H                   | 595      | 170      | 5J           | 380AA   |                |                |                |                |
| 175/55R15  | 77T/77H                   | 573      | 182      | 5½J          | 380AA   |                |                |                |                |
| 175/60R15  | 81H                       | 591      | 177      | 5J           | 380AA   | E              | C              | 70dB           | (C1)           |
| 175/65R15  | 84H                       | 609      | 177      | 5J           | 380AA   | C              | C              | 70dB           | (C1)           |
| 185/55R15  | 82V                       | 585      | 194      | 6J           | 380AA   | E              | C              | 70dB           | (C1)           |
| 185/60R15  | 84H                       | 603      | 189      | 5½J          | 380AA   | C              | C              | 70dB           | (C1)           |
| 185/60R15  | 88H XL                    | 603      | 189      | 5½J          | 380AA   | C              | C              | 70dB           | (C1)           |
| 185/65R15  | 88T/88H                   | 621      | 189      | 5½J          | 380AA   | C              | C              | 70dB           | (C1)           |
| 195/50R15  | 82V                       | 577      | 201      | 6J           | 380AA   | E              | C              | 71dB           | (C1)           |
| 195/55R15  | 85V                       | 595      | 201      | 6J           | 380AA   | E              | C              | 71dB           | (C1)           |
| 195/60R15  | 88H/88V                   | 615      | 201      | 6J           | 380AA   | C              | C              | 71dB           | (C1)           |
| 195/65R15  | 91H/91V                   | 635      | 201      | 6J           | 380AA   | C              | C              | 71dB           | (C1)           |
| 195/70R15  | 97S XL                    | 655      | 201      | 6J           | 380AA   |                |                |                |                |
| 205/50R15  | 86V                       | 587      | 214      | 6½J          | 380AA   |                |                |                |                |
| 205/60R15  | 91H/91V                   | 627      | 209      | 6J           | 380AA   |                |                |                |                |
| 205/65R15  | 94H/91V                   | 647      | 209      | 6J           | 380AA   | C              | C              | 71dB           | (C1)           |
| 205/70R15  | 96H                       | 669      | 209      | 6J           | 380AA   | C              | C              | 71dB           | (C1)           |
| 215/65R15  | 100H XL                   | 661      | 221      | 6½J          | 380AA   | B              | C              | 72dB           | (C1)           |
| 215/65R15  | 96H                       | 661      | 221      | 6½J          | 380AA   |                |                |                |                |
| 215/70R15  | 98T                       | 683      | 221      | 6½J          | 380AA   | C              | C              | 71dB           | (C1)           |
| 225/60R15  | 96H                       | 651      | 228      | 6½J          | 380AA   |                |                |                |                |
| 225/70R15  | 100T/100H                 | 697      | 228      | 6½J          | 380AA   | C              | C              | 71dB           | (C1)           |
| 185/55R16  | 83H/83V                   | 610      | 194      | 6J           | 380AA   |                |                |                |                |
| 195/50R16  | 84H/84V                   | 602      | 201      | 6J           | 380AA   | E              | C              | 71dB           | (C1)           |
| 195/55R16  | 87H/87V                   | 620      | 201      | 6J           | 380AA   | C              | C              | 71dB           | (C1)           |
| 205/50ZR16 | 87W                       | 612      | 214      | 6½J          | 380AA   | C              | C              | 71dB           | (C1)           |
| 205/55R16  | 91V                       | 632      | 214      | 6½J          | 380AA   |                |                |                |                |
| 205/55ZR16 | 91W                       | 632      | 214      | 6½J          | 380AA   | C              | C              | 71dB           | (C1)           |
| 205/55ZR16 | 94W XL                    | 632      | 214      | 6½J          | 380AA   |                |                |                |                |
| 205/60R16  | 92H/92V                   | 652      | 209      | 6J           | 380AA   | C              | C              | 71dB           | (C1)           |
| 205/65R16  | 95V                       | 672      | 209      | 6J           | 380AA   | C              | C              | 71dB           | (C1)           |
| 215/55ZR16 | 97W XL                    | 642      | 226      | 7J           | 380AA   | B              | C              | 72dB           | (C1)           |
| 215/60R16  | 95H/95V                   | 664      | 221      | 6½J          | 380AA   | C              | C              | 71dB           | (C1)           |
| 215/65R16  | 98H                       | 686      | 221      | 6½J          | 380AA   | C              | C              | 71dB           | (C1)           |
| 215/70R16  | 100T/100H                 | 708      | 221      | 6½J          | 380AA   |                |                |                |                |
| 225/50ZR16 | 92W                       | 632      | 233      | 7J           | 380AA   | C              | C              | 71dB           | (C1)           |
| 225/50ZR16 | 96W XL                    | 632      | 233      | 7J           | 380AA   | B              | C              | 72dB           | (C1)           |
| 225/55ZR16 | 99W XL                    | 654      | 233      | 7J           | 380AA   | B              | C              | 72dB           | (C1)           |
| 225/60R16  | 98H                       | 676      | 228      | 6½J          | 380AA   | C              | C              | 71dB           | (C1)           |
| 225/60R16  | 102H XL                   | 676      | 228      | 6½J          | 380AA   | B              | C              | 72dB           | (C1)           |
| 225/70R16  | 103T/103H                 | 722      | 228      | 6½J          | 380AA   |                |                |                |                |



# SP726

## UHP TIRE



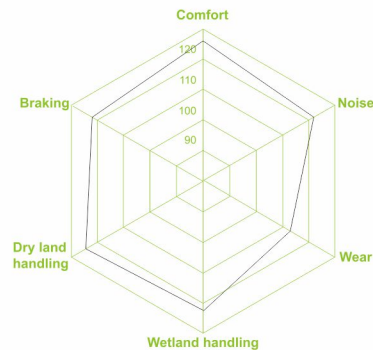
### Asymmetric tread design

four wide grooves design provide effective drainage and sufficient wet safety performance



### Innovative technology

willow leaf shaped biomimetic tread block design adopting willow-shaped biomimetic pattern block design inside , effectively prevent abnormal wear of pattern block comers.together with "s" shaped on tread grooves , bring soft,silence and comfort



### Performance Test



## SIZE RANGE

| SIZE       | LOAD INDEX & SPEED RATING | O.D (MM) | S.W (MM) | STANDARD RIM | U.T.Q.G | EUROPEAN | USA   | NOISE | EUROPEAN |
|------------|---------------------------|----------|----------|--------------|---------|----------|-------|-------|----------|
| 195/50R15  | 82V                       | 577      | 201      | 6J           | 320AA   | E        | B     | 70dB  | (C1)     |
| 195/55R15  | 85V                       | 595      | 201      | 6J           | 320AA   | E        | B     | 70dB  | (C1)     |
| 235/60R15  | 98H/98V                   | 663      | 240      | 7J           | 320AA   | -----    | ----- | ----- | -----    |
| 245/60R15  | 101H/101V                 | 675      | 248      | 7J           | 320AA   | -----    | ----- | ----- | -----    |
| 195/45R16  | 84V XL                    | 582      | 195      | 6½J          | 320AA   | E        | B     | 71dB  | (C1)     |
| 205/45ZR16 | 87W XL                    | 590      | 206      | 7J           | 320AA   | E        | B     | 71dB  | (C1)     |
| 205/50ZR16 | 91W XL                    | 612      | 214      | 6½J          | 320AA   | C        | B     | 71dB  | (C1)     |
| 205/55ZR16 | 91W                       | 632      | 214      | 6½J          | 320AA   | E        | B     | 70dB  | (C1)     |
| 215/40ZR16 | 86W XL                    | 578      | 218      | 7½J          | 320AA   | -----    | ----- | ----- | -----    |
| 215/55ZR16 | 97W XL                    | 642      | 226      | 7J           | 320AA   | C        | B     | 71dB  | (C1)     |
| 225/50ZR16 | 96W XL                    | 632      | 233      | 7J           | 320AA   | E        | B     | 71dB  | (C1)     |
| 225/55ZR16 | 99W XL                    | 654      | 233      | 7J           | 320AA   | E        | B     | 71dB  | (C1)     |
| 225/65R16  | 100H/100V                 | 698      | 228      | 6½J          | 320AA   | -----    | ----- | ----- | -----    |
| 235/65R16  | 103H                      | 712      | 240      | 7J           | 320AA   | -----    | ----- | ----- | -----    |
| 205/40ZR17 | 84W XL                    | 596      | 212      | 7½J          | 320AA   | E        | B     | 71dB  | (C1)     |
| 205/45ZR17 | 88W XL                    | 616      | 206      | 7J           | 320AA   | C        | B     | 71dB  | (C1)     |
| 205/50ZR17 | 93W XL                    | 638      | 214      | 6½J          | 320AA   | C        | B     | 71dB  | (C1)     |
| 205/55ZR17 | 95W XL                    | 658      | 214      | 6½J          | 320AA   | -----    | ----- | ----- | -----    |
| 215/40ZR17 | 87W XL                    | 604      | 218      | 7½J          | 320AA   | E        | B     | 71dB  | (C1)     |
| 215/45ZR17 | 91W XL                    | 626      | 213      | 7J           | 320AA   | C        | B     | 71dB  | (C1)     |
| 215/50ZR17 | 95W XL                    | 648      | 226      | 7J           | 320AA   | C        | B     | 71dB  | (C1)     |
| 215/55ZR17 | 98W XL                    | 668      | 226      | 7J           | 320AA   | C        | B     | 71dB  | (C1)     |
| 225/45ZR17 | 94W XL                    | 634      | 225      | 7½J          | 320AA   | E        | B     | 71dB  | (C1)     |
| 225/50ZR17 | 98W XL                    | 658      | 233      | 7J           | 320AA   | C        | B     | 71dB  | (C1)     |
| 225/55ZR17 | 101W XL                   | 680      | 233      | 7J           | 320AA   | C        | B     | 71dB  | (C1)     |
| 225/60R17  | 99H/99V                   | 702      | 228      | 6½J          | 320AA   | -----    | ----- | ----- | -----    |
| 235/45ZR17 | 97W XL                    | 644      | 236      | 8J           | 320AA   | E        | B     | 71dB  | (C1)     |
| 235/50ZR17 | 96W                       | 668      | 245      | 7½J          | 320AA   | -----    | ----- | ----- | -----    |
| 235/50ZR17 | 100W XL                   | 668      | 245      | 7½J          | 320AA   | -----    | ----- | ----- | -----    |
| 235/55ZR17 | 103W XL                   | 690      | 245      | 7½J          | 320AA   | C        | B     | 71dB  | (C1)     |
| 245/40ZR17 | 95W XL                    | 628      | 248      | 8½J          | 320AA   | -----    | ----- | ----- | -----    |
| 245/45ZR17 | 99W XL                    | 652      | 243      | 8J           | 320AA   | E        | B     | 71dB  | (C1)     |
| 215/35ZR18 | 84W XL                    | 607      | 218      | 7½J          | 320AA   | E        | B     | 71dB  | (C1)     |
| 215/40ZR18 | 89W XL                    | 629      | 218      | 7½J          | 320AA   | -----    | ----- | ----- | -----    |
| 225/40ZR18 | 92W XL                    | 637      | 230      | 8J           | 320AA   | E        | B     | 71dB  | (C1)     |
| 225/45ZR18 | 95W XL                    | 659      | 225      | 7½J          | 320AA   | C        | B     | 71dB  | (C1)     |
| 225/55ZR18 | 102W XL                   | 705      | 233      | 7J           | 320AA   | -----    | ----- | ----- | -----    |
| 235/40ZR18 | 95W XL                    | 645      | 241      | 8½J          | 320AA   | E        | B     | 71dB  | (C1)     |
| 235/45ZR18 | 98W XL                    | 669      | 236      | 8J           | 320AA   | E        | B     | 71dB  | (C1)     |
| 235/50ZR18 | 101W XL                   | 693      | 245      | 7½J          | 320AA   | C        | B     | 71dB  | (C1)     |
| 235/55ZR18 | 104W XL                   | 715      | 245      | 7½J          | 320AA   | C        | B     | 71dB  | (C1)     |
| 245/40ZR18 | 97W XL                    | 653      | 248      | 8½J          | 320AA   | E        | B     | 71dB  | (C1)     |
| 245/45ZR18 | 100W XL                   | 677      | 243      | 8J           | 320AA   | C        | B     | 71dB  | (C1)     |
| 245/50ZR18 | 100W                      | 703      | 253      | 7½J          | 320AA   | -----    | ----- | ----- | -----    |
| 255/35ZR18 | 94Y XL                    | 635      | 260      | 9J           | 320AA   | E        | B     | 72dB  | (C1)     |
| 255/40ZR18 | 99W XL                    | 661      | 260      | 9J           | 320AA   | -----    | ----- | ----- | -----    |
| 255/45ZR18 | 103W XL                   | 687      | 255      | 8½J          | 320AA   | C        | B     | 72dB  | (C1)     |
| 255/55R18  | 109H/109V XL              | 737      | 265      | 8J           | 320AA   | -----    | ----- | ----- | -----    |
| 265/35ZR18 | 97Y XL                    | 643      | 271      | 9½J          | 320AA   | E        | B     | 72dB  | (C1)     |
| 225/30ZR19 | 84W XL                    | 619      | 230      | 8J           | 320AA   | -----    | ----- | ----- | -----    |
| 225/35ZR19 | 88W XL                    | 641      | 230      | 8J           | 320AA   | E        | B     | 71dB  | (C1)     |
| 235/35ZR19 | 91W XL                    | 647      | 241      | 8½J          | 320AA   | E        | B     | 71dB  | (C1)     |
| 235/45ZR19 | 99W XL                    | 695      | 236      | 8J           | 320AA   | -----    | ----- | ----- | -----    |
| 245/35ZR19 | 93W XL                    | 655      | 248      | 8½J          | 320AA   | E        | B     | 71dB  | (C1)     |
| 245/40ZR19 | 98W XL                    | 679      | 248      | 8½J          | 320AA   | -----    | ----- | ----- | -----    |
| 245/45ZR19 | 102W XL                   | 703      | 243      | 8J           | 320AA   | C        | B     | 71dB  | (C1)     |
| 255/35ZR19 | 96W XL                    | 661      | 260      | 9J           | 320AA   | -----    | ----- | ----- | -----    |
| 255/40ZR19 | 100W XL                   | 687      | 260      | 9J           | 320AA   | -----    | ----- | ----- | -----    |
| 225/35ZR20 | 90W XL                    | 666      | 230      | 8J           | 320AA   | E        | B     | 71dB  | (C1)     |
| 235/35ZR20 | 92W XL                    | 672      | 241      | 8½J          | 320AA   | E        | B     | 71dB  | (C1)     |
| 245/35ZR20 | 95Y XL                    | 680      | 248      | 8½J          | 320AA   | E        | B     | 71dB  | (C1)     |
| 255/35ZR20 | 97W XL                    | 686      | 260      | 9J           | 320AA   | -----    | ----- | ----- | -----    |
| 265/45ZR20 | 108W XL                   | 746      | 266      | 9J           | 320AA   | -----    | ----- | ----- | -----    |
| 265/50ZR20 | 111V XL                   | 774      | 277      | 8½J          | 320AA   | C        | B     | 72dB  | (C1)     |
| 275/40ZR20 | 106W XL                   | 728      | 278      | 9½J          | 320AA   | E        | B     | 72dB  | (C1)     |



# SP766

## ALL SEASON SUV TIRE H/T



Four wide grooves design provide effective drainage and sufficient wet safety performance.



Design of central rib with sipes promotes the rigidity, help to balance high-speed performance and grip performance on wet land.

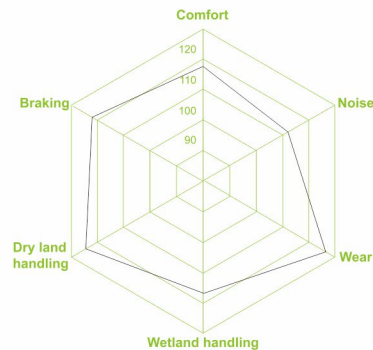
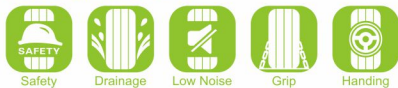


The compact shoulder design provide excellent handling performance with low noise.



Multiple blade groove pattern provide excellent grip and handling performance on wet land.

### Performance Test



## SIZE RANGE

| SIZE      | LOAD INDEX & SPEED RATING | O.D (MM) | S.W (MM) | STANDARD RIM | U.T.Q.G | EUROPEAN | USA   | NOISE | EUROPEAN |
|-----------|---------------------------|----------|----------|--------------|---------|----------|-------|-------|----------|
| 215/75R15 | 100T                      | 703      | 216      | 6J           | 440AA   | E        | C     | 71dB  | (C1)     |
| 225/75R15 | 102T                      | 719      | 223      | 6J           | 440AA   | E        | C     | 71dB  | (C1)     |
| 235/75R15 | 105S                      | 733      | 235      | 6½J          | 440AA   | -----    | ----- | ----- | -----    |
| 215/65R16 | 98H                       | 686      | 221      | 6½J          | 440AA   | -----    | ----- | ----- | -----    |
| 215/70R16 | 100T                      | 708      | 221      | 6½J          | 440AA   | E        | C     | 71dB  | (C1)     |
| 225/70R16 | 103T                      | 722      | 228      | 6½J          | 440AA   | E        | C     | 71dB  | (C1)     |
| 235/60R16 | 100H/100V                 | 688      | 240      | 7J           | 440AA   | E        | C     | 71dB  | (C1)     |
| 235/60R16 | 103T/103H                 | 712      | 240      | 7J           | 440AA   | -----    | ----- | ----- | -----    |
| 235/70R16 | 106T                      | 736      | 240      | 7J           | 440AA   | E        | C     | 71dB  | (C1)     |
| 245/70R16 | 107T                      | 750      | 248      | 7J           | 440AA   | E        | C     | 71dB  | (C1)     |
| 255/65R16 | 109H                      | 738      | 260      | 7½J          | 440AA   | E        | C     | 72dB  | (C1)     |
| 255/70R16 | 111T                      | 764      | 260      | 7½J          | 440AA   | E        | C     | 72dB  | (C1)     |
| 265/70R16 | 112T                      | 778      | 272      | 8J           | 440AA   | E        | C     | 72dB  | (C1)     |
| 275/70R16 | 114T/114H                 | 792      | 279      | 8J           | 440AA   | E        | C     | 72dB  | (C1)     |
| 215/60R17 | 96H                       | 690      | 221      | 6½J          | 440AA   | E        | C     | 71dB  | (C1)     |
| 215/65R17 | 99H                       | 712      | 221      | 6½J          | 440AA   | -----    | ----- | ----- | -----    |
| 225/60R17 | 99H                       | 712      | 221      | 6½J          | 440AA   | -----    | ----- | ----- | -----    |
| 225/65R17 | 102H                      | 724      | 228      | 6½J          | 440AA   | -----    | ----- | ----- | -----    |
| 225/65R17 | 106H XL                   | 724      | 228      | 6½J          | 440AA   | C        | C     | 72dB  | (C1)     |
| 235/55R17 | 103V XL                   | 690      | 245      | 7½J          | 440AA   | E        | C     | 72dB  | (C1)     |
| 235/65R17 | 108H XL                   | 738      | 240      | 7J           | 440AA   | C        | C     | 72dB  | (C1)     |
| 245/65R17 | 111H XL                   | 750      | 248      | 7J           | 440AA   | C        | C     | 72dB  | (C1)     |
| 255/60R17 | 106V                      | 738      | 260      | 7½J          | 440AA   | E        | C     | 72dB  | (C1)     |
| 255/65R17 | 110T/110H                 | 764      | 260      | 7½J          | 440AA   | -----    | ----- | ----- | -----    |
| 265/65R17 | 112H                      | 776      | 272      | 8J           | 440AA   | E        | C     | 72dB  | (C1)     |
| 265/65R17 | 116H XL                   | 776      | 272      | 8J           | 440AA   | C        | C     | 73dB  | (C1)     |
| 245/70R17 | 110T/110H                 | 776      | 248      | 7J           | 440AA   | -----    | ----- | ----- | -----    |
| 265/70R17 | 115T/115H                 | 804      | 272      | 8J           | 440AA   | C        | C     | 72dB  | (C1)     |
| 285/65R17 | 116H XL                   | 802      | 292      | 8½J          | 440AA   | E        | C     | 74dB  | (C1)     |
| 225/60R18 | 100H/100V                 | 727      | 228      | 6½J          | 440AA   | -----    | ----- | ----- | -----    |
| 235/55R18 | 104V XL                   | 715      | 245      | 7½J          | 440AA   | E        | C     | 72dB  | (C1)     |
| 255/55R18 | 109V XL                   | 737      | 265      | 8J           | 440AA   | E        | C     | 73dB  | (C1)     |
| 235/60R18 | 107H XL                   | 739      | 240      | 7J           | 440AA   | -----    | ----- | ----- | -----    |
| 235/65R18 | 110H XL                   | 763      | 240      | 7J           | 440AA   | -----    | ----- | ----- | -----    |
| 245/60R18 | 105H/105V                 | 751      | 248      | 7J           | 440AA   | -----    | ----- | ----- | -----    |
| 255/60R18 | 112H/112V XL              | 763      | 260      | 7½J          | 440AA   | -----    | ----- | ----- | -----    |
| 265/60R18 | 110H                      | 775      | 272      | 8J           | 440AA   | E        | C     | 72dB  | (C1)     |
| 265/65R18 | 114H                      | 801      | 272      | 8J           | 440AA   | -----    | ----- | ----- | -----    |
| 265/70R18 | 116T                      | 829      | 272      | 8J           | 440AA   | -----    | ----- | ----- | -----    |
| 275/65R18 | 116H                      | 815      | 279      | 8J           | 440AA   | E        | C     | 72dB  | (C1)     |
| 235/50R19 | 99V                       | 719      | 245      | 7½J          | 440AA   | -----    | ----- | ----- | -----    |
| 245/55R19 | 103V                      | 753      | 253      | 7½J          | 440AA   | -----    | ----- | ----- | -----    |
| 255/50R19 | 103V                      | 739      | 265      | 8J           | 440AA   | -----    | ----- | ----- | -----    |
| 255/50R19 | 107V XL                   | 739      | 265      | 8J           | 440AA   | -----    | ----- | ----- | -----    |
| 255/55R19 | 111H/111V XL              | 763      | 265      | 8J           | 440AA   | -----    | ----- | ----- | -----    |
| 265/50R19 | 110V XL                   | 749      | 277      | 8½J          | 440AA   | -----    | ----- | ----- | -----    |
| 275/45R19 | 108V XL                   | 731      | 273      | 9J           | 440AA   | -----    | ----- | ----- | -----    |
| 275/55R19 | 111V                      | 785      | 284      | 8½J          | 440AA   | -----    | ----- | ----- | -----    |
| 285/50R20 | 116V XL                   | 794      | 297      | 9J           | 440AA   | C        | C     | 75dB  | (C1)     |
| 205/70R15 | 100T XL                   | 669      | 209      | 6J           | 440AA   | E        | C     | 72dB  | (C1)     |
| 255/70R15 | 108T                      | 739      | 260      | 7½J          | 440AA   | -----    | ----- | ----- | -----    |
| 265/70R15 | 112T/112S                 | 753      | 272      | 8J           | 440AA   | -----    | ----- | ----- | -----    |



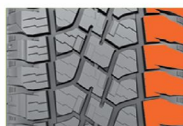
# SP786

ALL SEASON SUV TIRE A/T



**Chamfer design of the pattern:**

Prevent stone nipped, enhance the ability to get rid of the stone



**Wide shoulder pattern design:**

Enhance the block rigidity, endurance, weight-carrying ability and steering qualities during driving



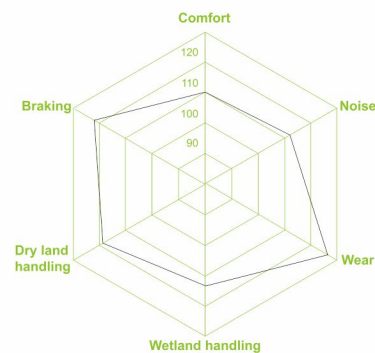
**Staggered central rib design:**

Solid staggered central rib design ensures straight-line driving stability and safety



**Multi-steel strap design:**

Promote the grip performance on wet and dry land, enhance the tractive performance



**Performance Test**



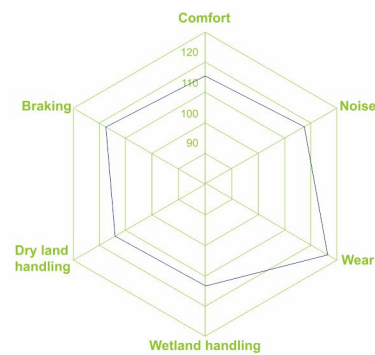
**SIZE RANGE**

| SIZE          | LOAD INDEX & SPEED RATING | O.D (MM) | S.W (MM) | STANDARD RIM | U.T.Q.G | EUROPEAN | USA | ASIA      | AFRICA |
|---------------|---------------------------|----------|----------|--------------|---------|----------|-----|-----------|--------|
| 215R15C       | 113/111S-8PR              | 724      | 218      | 6J           | 480AB   | E        | E   | 73dB (C2) |        |
| 215/75R15LT   | 100/97Q-6PR               | 709      | 216      | 6J           | 480AB   | E        | E   | 73dB (C2) |        |
| 215/75R16LT   | 100/97R-6PR               | 709      | 216      | 6J           | 480AB   | E        | E   | 73dB (C2) |        |
| 225/75R15LT   | 108/104Q-8PR              | 725      | 223      | 6J           | 480AB   | E        | E   | 73dB (C2) |        |
| 225/75R16LT   | 108/104R-8PR              | 725      | 223      | 6J           | 480AB   | E        | E   | 73dB (C2) |        |
| 235/75R15LT   | 116/113Q-10PR             | 739      | 235      | 6½J          | 480AB   | E        | E   | 73dB (C2) |        |
| 235/75R16LT   | 116/113R-10PR             | 739      | 235      | 6½J          | 480AB   | E        | E   | 73dB (C2) |        |
| 30×9.50R15LT  | 104Q-6PR                  | 756      | 240      | 7½J          | 480AB   | E        | E   | 73dB (C2) |        |
| 31×10.50R15LT | 109R-6PR                  | 781      | 268      | 8½J          | 480AB   | E        | E   | 73dB (C2) |        |
| 31×10.50R16LT | 109S-6PR                  | 781      | 268      | 8½J          | 480AB   | E        | E   | 73dB (C2) |        |
| 205R16C       | 110/108S-8PR              | 736      | 208      | 6J           | 480AB   | E        | E   | 73dB (C2) |        |
| 215/70R16     | 100S                      | 708      | 221      | 6½J          | 480AB   |          |     |           |        |
| 215/70R16     | 100T                      | 708      | 221      | 6½J          | 480AB   |          |     |           |        |
| 215/85R16LT   | 110/107Q-8PR              | 778      | 216      | 6J           | 480AB   | E        | E   | 73dB (C2) |        |
| 215/85R16LT   | 110/107R-8PR              | 778      | 216      | 6J           | 480AB   | E        | E   | 73dB (C2) |        |
| 215/85R16LT   | 115/112Q-10PR             | 778      | 216      | 6J           | 480AB   | E        | E   | 73dB (C2) |        |
| 215/85R16LT   | 115/112R-10PR             | 778      | 216      | 6J           | 480AB   | E        | E   | 73dB (C2) |        |
| 225/70R16     | 103S                      | 722      | 228      | 6½J          | 480AB   |          |     |           |        |
| 225/70R16     | 103T                      | 722      | 228      | 6½J          | 480AB   |          |     |           |        |
| 225/75R16LT   | 115/112Q-10PR             | 750      | 223      | 6J           | 480AB   | E        | E   | 73dB (C2) |        |
| 225/75R16LT   | 115/112R-10PR             | 750      | 223      | 6J           | 480AB   | E        | E   | 73dB (C2) |        |
| 235/70R16     | 106S                      | 736      | 240      | 7J           | 480AB   |          |     |           |        |
| 235/70R16     | 106T                      | 736      | 240      | 7J           | 480AB   |          |     |           |        |
| 235/85R16LT   | 120/116Q-10PR             | 812      | 235      | 6½J          | 480AB   | E        | E   | 73dB (C2) |        |
| 235/85R16LT   | 120/116R-10PR             | 812      | 235      | 6½J          | 480AB   | E        | E   | 73dB (C2) |        |
| 245/70R16     | 107S                      | 750      | 248      | 7J           | 480AB   |          |     |           |        |
| 245/70R16     | 107T                      | 750      | 248      | 7J           | 480AB   |          |     |           |        |
| 245/75R16LT   | 120/116Q-10PR             | 780      | 248      | 7J           | 480AB   | E        | E   | 73dB (C2) |        |
| 245/75R16LT   | 120/116R-10PR             | 780      | 248      | 7J           | 480AB   | E        | E   | 73dB (C2) |        |
| 255/70R16     | 111S                      | 764      | 260      | 7½J          | 480AB   |          |     |           |        |
| 255/70R16     | 111T                      | 764      | 260      | 7½J          | 480AB   |          |     |           |        |
| 265/70R16     | 112S                      | 778      | 272      | 8J           | 480AB   |          |     |           |        |
| 265/70R16     | 112T                      | 778      | 272      | 8J           | 480AB   |          |     |           |        |
| 265/70R16LT   | 121/118R-10PR             | 784      | 272      | 8J           | 480AB   | E        | C   | 73dB (C2) |        |
| 265/70R16LT   | 121/118S-10PR             | 784      | 272      | 8J           | 480AB   | E        | C   | 73dB (C2) |        |
| 265/75R16LT   | 123/120Q-10PR             | 810      | 267      | 7½J          | 480AB   | E        | C   | 75dB (C3) |        |
| 265/75R16LT   | 123/120R-10PR             | 810      | 267      | 7½J          | 480AB   | E        | C   | 75dB (C3) |        |
| 275/70R16     | 114S                      | 792      | 279      | 8J           | 480AB   |          |     |           |        |
| 275/70R16     | 114T                      | 792      | 279      | 8J           | 480AB   |          |     |           |        |
| 285/75R16LT   | 126/123Q-10PR             | 840      | 286      | 8J           | 480AB   | E        | C   | 75dB (C3) |        |
| 285/75R16LT   | 126/123R-10PR             | 840      | 286      | 8J           | 480AB   | E        | C   | 75dB (C3) |        |
| 235/80R17LT   | 120/117Q-10PR             | 814      | 235      | 6½J          | 480AB   | E        | E   | 73dB (C2) |        |
| 235/80R17LT   | 120/117R-10PR             | 814      | 235      | 6½J          | 480AB   | E        | E   | 73dB (C2) |        |
| 245/70R17LT   | 119/116R-10PR             | 782      | 248      | 7J           | 480AB   | E        | E   | 73dB (C2) |        |
| 245/70R17LT   | 119/116S-10PR             | 782      | 248      | 7J           | 480AB   | E        | E   | 73dB (C2) |        |
| 245/75R17LT   | 121/118Q-10PR             | 806      | 248      | 7J           | 480AB   | E        | E   | 73dB (C2) |        |
| 245/75R17LT   | 121/118R-10PR             | 806      | 248      | 7J           | 480AB   | E        | E   | 73dB (C2) |        |
| 265/65R17     | 112S                      | 776      | 272      | 8J           | 480AB   |          |     |           |        |
| 265/65R17     | 112T                      | 776      | 272      | 8J           | 480AB   |          |     |           |        |
| 265/70R17     | 115S                      | 804      | 272      | 8J           | 480AB   |          |     |           |        |
| 265/70R17     | 115T                      | 804      | 272      | 8J           | 480AB   |          |     |           |        |
| 265/70R17LT   | 121/118R-10PR             | 810      | 272      | 8J           | 480AB   | E        | C   | 73dB (C2) |        |
| 265/70R17LT   | 121/118S-10PR             | 810      | 272      | 8J           | 480AB   | E        | C   | 73dB (C2) |        |
| 275/65R17     | 115S                      | 790      | 279      | 8J           | 480AB   |          |     |           |        |
| 275/65R17     | 115T                      | 790      | 279      | 8J           | 480AB   |          |     |           |        |
| 285/70R17LT   | 121/118R-8PR              | 838      | 292      | 8½J          | 480AB   | E        | C   | 73dB (C2) |        |
| 285/70R17LT   | 121/118S-8PR              | 838      | 292      | 8½J          | 480AB   | E        | C   | 73dB (C2) |        |
| 265/70R18LT   | 124/121R-10PR             | 829      | 272      | 8J           | 480AB   | E        | C   | 75dB (C3) |        |
| 265/70R18LT   | 124/121S-10PR             | 829      | 272      | 8J           | 480AB   | E        | C   | 75dB (C3) |        |
| 275/65R18LT   | 123/120S-10PR             | 821      | 279      | 8J           | 480AB   | E        | C   | 75dB (C3) |        |



# SP796

## COMMERCIAL TIRE VAN



### Performance Test



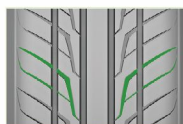
### SIZE RANGE

| SIZE       | LOAD INDEX & SPEED RATING | O.D (MM) | S.W (MM) | STANDARD RIM | U.T.Q.G |   |   |      |      |
|------------|---------------------------|----------|----------|--------------|---------|---|---|------|------|
| 175/65R14C | 90/88T-6PR                | 584      | 177      | 5J           | -----   |   |   |      |      |
| 185R14C    | 102/100S-8PR              | 650      | 188      | 5½J          | -----   | C | E | 72dB | (C2) |
| 195R14C    | 106/104S-8PR              | 666      | 198      | 5½J          | -----   | C | E | 72dB | (C2) |
| 205R14C    | 109/107R-8PR              | 684/686  | 208      | 6J           | -----   | C | E | 72dB | (C2) |
| 215/75R14C | 112/110R-8PR              | 678      | 216      | 6J           | -----   | C | E | 72dB | (C2) |
| 195R15C    | 106/104S-8PR              | 693      | 196      | 5½J          | -----   | C | E | 72dB | (C2) |
| 6.50R15C   | 106/101N-10PR             | 730      | 180      | 5.50F        | -----   |   |   |      |      |
| 7.00R15LT  | 109/105N-10PR             | 750      | 200      | 5.50F        | -----   |   |   |      |      |
| 6.50R16C   | 108/107N-10PR             | 750      | 185      | 4½J          | -----   | C | E | 72dB | (C2) |
| 7.00R16C   | 117/116N-12PR             | 775      | 200      | 5½J          | -----   | C | E | 72dB | (C2) |
| 7.50R16C   | 121/120N-12PR             | 805      | 215      | 6.00G        | -----   | C | E | 72dB | (C2) |
| 195/70R15C | 104/102S-8PR              | 655      | 201      | 6J           | -----   | C | E | 72dB | (C2) |
| 205/70R15C | 106/104S-8PR              | 669      | 209      | 6J           | -----   | C | E | 72dB | (C2) |
| 215/70R15C | 109/107S-8PR              | 683      | 221      | 6½J          | -----   | C | E | 72dB | (C2) |
| 225/70R15C | 112/110S-8PR              | 697      | 228      | 6½J          | -----   | C | E | 72dB | (C2) |
| 175/75R16C | 98/96Q-6PR                | 668      | 177      | 5J           | -----   | C | E | 72dB | (C2) |
| 185/75R16C | 104/102S-8PR              | 684      | 184      | 5J           | -----   | C | E | 72dB | (C2) |
| 195/60R16C | 99/97T-6PR                | 640      | 201      | 6J           | -----   | C | E | 72dB | (C2) |
| 195/65R16C | 104/102T-8PR              | 660      | 201      | 6J           | -----   | C | E | 72dB | (C2) |
| 195/75R16C | 107/105S-8PR              | 698      | 196      | 5½J          | -----   | C | E | 72dB | (C2) |
| 205/65R16C | 107/105T-8PR              | 672      | 209      | 6J           | -----   | C | E | 72dB | (C2) |
| 205/75R16C | 110/108R-8PR              | 714      | 203      | 5½J          | -----   | C | E | 72dB | (C2) |
| 215/60R16C | 103/101T-6PR              | 664      | 221      | 6½J          | -----   | C | E | 72dB | (C2) |
| 215/65R16C | 109/107T-8PR              | 686      | 221      | 6½J          | -----   | C | E | 72dB | (C2) |
| 215/75R16C | 113/111S-8PR              | 728      | 216      | 6J           | -----   |   |   |      |      |
| 215/75R16C | 116/114R-10PR             | 728      | 216      | 6J           | -----   | C | E | 72dB | (C2) |
| 225/65R16C | 112/110T-8PR              | 698      | 228      | 6½J          | -----   | C | E | 72dB | (C2) |
| 225/75R16C | 116/114S-8PR              | 744      | 223      | 6J           | -----   |   |   |      |      |
| 225/75R16C | 121/120R-10PR             | 744      | 223      | 6J           | -----   | C | E | 72dB | (C2) |
| 235/65R16C | 115/113T-8PR              | 712      | 240      | 7J           | -----   | C | E | 72dB | (C2) |

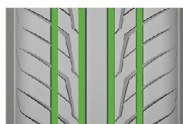


# SP788

## UHP TIRE



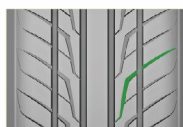
"Flying wing type" high gradient of single-oriented symmetrical pattern design, giving the tire super visual sense of speed, drainage performance and curve control.



Four wide and deep longitudinal groove design, giving the tire excellent wetland drainage performance and handling stability.

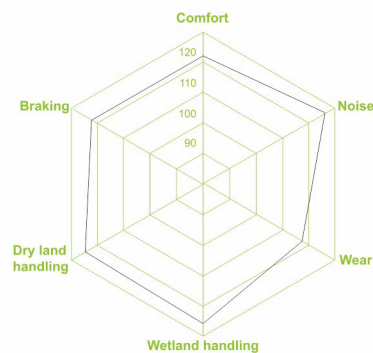


Central wide rib design, ensuring the steering performance.






Variable width of the groove design can effectively avoid airflow frequency vibration, prevent entrained gravel, reduce abnormal wear and improve the tire service life.

### Performance Test



## SIZE RANGE

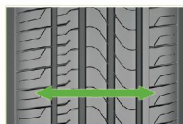
| SIZE       | LOAD INDEX & SPEED RATING | O.D (MM) | S.W (MM) | STANDARD RIM | U.T.Q.G |  |  |  |  |
|------------|---------------------------|----------|----------|--------------|---------|---|---|---|---|
| 255/45ZR17 | 98W                       | 662      | 255      | 8½J          | 320AA   |   |   |   |   |
| 255/45R17  | 98V                       | 662      | 255      | 8½J          | 320AA   |   |   |   |   |
| 235/45ZR18 | 98E XL                    | 669      | 236      | 8J           | 320AA   |   |   |   |   |
| 255/40ZR18 | 99W XL                    | 661      | 260      | 9J           | 320AA   |   |   |   |   |
| 235/55ZR19 | 105W XL                   | 741      | 245      | 7½J          | 320AA   |   |   |   |   |
| 245/35ZR19 | 93W XL                    | 655      | 248      | 8½J          | 320AA   |   |   |   |   |
| 245/45ZR19 | 102W XL                   | 703      | 243      | 8J           | 320AA   |   |   |   |   |
| 245/55ZR19 | 103W                      | 753      | 253      | 7½J          | 320AA   |   |   |   |   |
| 265/30ZR19 | 93W XL                    | 643      | 271      | 9½J          | 320AA   |   |   |   |   |
| 235/30ZR20 | 88W XL                    | 651      | 241      | 8½J          | 320AA   |   |   |   |   |
| 245/35ZR20 | 95W XL                    | 680      | 248      | 8½J          | 320AA   |   |   |   |   |
| 245/45ZR20 | 103W XL                   | 728      | 243      | 8J           | 320AA   |   |   |   |   |
| 245/50ZR20 | 102W                      | 754      | 253      | 7½J          | 320AA   |   |   |   |   |
| 255/45ZR20 | 105W XL                   | 738      | 255      | 8½J          | 320AA   |   |   |   |   |
| 255/50ZR20 | 109Y XL                   | 764      | 265      | 8J           | 320AA   |   |   |   |   |
| 255/50ZR20 | 109W XL                   | 764      | 265      | 8J           | 320AA   |   |   |   |   |
| 265/40ZR20 | 104Y XL                   | 720      | 271      | 9½J          | 320AA   |   |   |   |   |
| 265/50ZR20 | 111W XL                   | 774      | 277      | 8½J          | 320AA   |   |   |   |   |
| 275/35ZR20 | 102W XL                   | 700      | 278      | 9½J          | 320AA   |   |   |   |   |
| 275/40ZR20 | 106W XL                   | 728      | 278      | 9½J          | 320AA   |   |   |   |   |
| 275/40R20  | 106V XL                   | 728      | 278      | 9½J          | 320AA   |   |   |   |   |
| 275/45ZR20 | 110W XL                   | 756      | 273      | 9J           | 320AA   |   |   |   |   |
| 275/55R20  | 117V XL                   | 810      | 284      | 8½J          | 320AA   |   |   |   |   |
| 275/55ZR20 | 117W XL                   | 810      | 284      | 8½J          | 320AA   |   |   |   |   |
| 285/50ZR20 | 116W XL                   | 794      | 297      | 9J           | 320AA   |   |   |   |   |
| 225/30ZR22 | 86W XL                    | 695      | 230      | 8J           | 320AA   |   |   |   |   |
| 235/30ZR22 | 90W XL                    | 701      | 241      | 8½J          | 320AA   |   |   |   |   |
| 245/30ZR22 | 92W XL                    | 707      | 248      | 8½J          | 320AA   |   |   |   |   |
| 255/30ZR22 | 95W XL                    | 713      | 260      | 9J           | 320AA   |   |   |   |   |
| 265/30ZR22 | 97W XL                    | 719      | 271      | 9½J          | 320AA   |   |   |   |   |
| 265/35ZR22 | 102W XL                   | 745      | 271      | 9½J          | 320AA   |   |   |   |   |
| 265/40ZR22 | 106W XL                   | 771      | 271      | 9½J          | 320AA   |   |   |   |   |
| 285/35ZR22 | 106W XL                   | 759      | 290      | 10J          | 320AA   |   |   |   |   |
| 285/45ZR22 | 114W XL                   | 815      | 285      | 9½J          | 320AA   |   |   |   |   |
| 295/25ZR22 | 97Y XL                    | 707      | 301      | 10½J         | 320AA   |   |   |   |   |
| 295/30ZR22 | 103W XL                   | 737      | 301      | 10½J         | 320AA   |   |   |   |   |
| 305/40ZR22 | 114W XL                   | 803      | 313      | 11J          | 320AA   |   |   |   |   |
| 305/45ZR22 | 118W XL                   | 833      | 303      | 10J          | 320AA   |   |   |   |   |
| 255/30ZR24 | 97W XL                    | 764      | 260      | 9J           | 320AA   |   |   |   |   |
| 275/25ZR24 | 96W XL                    | 748      | 283      | 10J          | 320AA   |   |   |   |   |
| 275/30ZR24 | 101W XL                   | 776      | 278      | 9½J          | 320AA   |   |   |   |   |
| 295/35R24  | 110V XL                   | 816      | 301      | 10½J         | 320AA   |   |   |   |   |
| 295/35ZR24 | 110W XL                   | 816      | 301      | 10½J         | 320AA   |   |   |   |   |



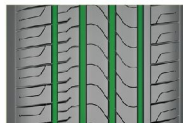


# SP7866

## UHP TIRE / RUN-FLAT TIRE



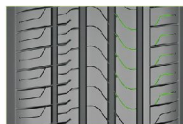
Smooth asymmetric pattern, ensuring better controlling performance of outside while enhancing drainage of inside



Four wide and deep longitudinal groove design, giving the tire excellent wetland drainage performance and handling stability.

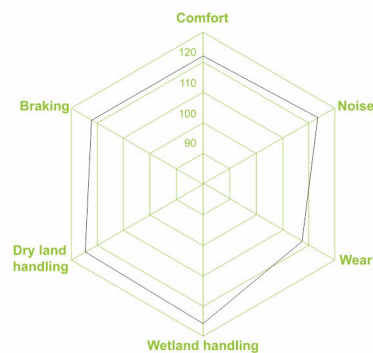


Outside shoulder reinforcement improving handling performance at curve, effectively preventing abnormal wear.



Bended steel groove, effectively reducing the noise while enlarging ground contact area.

### Performance Test



## UHP TIRE SIZE RANGE

| SIZE       | LOAD INDEX & SPEED RATING | O.D (MM) | S.W (MM) | STANDARD RIM | U.T.Q.G |       |
|------------|---------------------------|----------|----------|--------------|---------|-------|
| 245/45ZR17 | 99W XL                    | 652      | 243      | 8J           | 320AA   | ----- |
| 235/45ZR18 | 98W XL                    | 669      | 236      | 8J           | 320AA   | ----- |
| 275/40ZR18 | 99Y                       | 677      | 278      | 9½J          | 320AA   | ----- |
| 225/40ZR19 | 96W XL                    | 685      | 225      | 7½J          | 320AA   | ----- |
| 255/45ZR19 | 104W XL                   | 713      | 255      | 8½J          | 320AA   | ----- |
| 285/40ZR19 | 103Y                      | 711      | 290      | 10J          | 320AA   | ----- |
| 285/40ZR19 | 107Y                      | 711      | 290      | 10J          | 320AA   | ----- |
| 245/45ZR20 | 103W XL                   | 728      | 243      | 8J           | 320AA   | ----- |
| 255/40ZR20 | 101W XL                   | 712      | 260      | 9J           | 320AA   | ----- |
| 265/40ZR20 | 104W XL                   | 720      | 271      | 9½J          | 320AA   | ----- |
| 275/40ZR20 | 106W XL                   | 728      | 278      | 9½J          | 320AA   | ----- |
| 275/40ZR20 | 106V XL                   | 728      | 278      | 9½J          | 320AA   | ----- |

## RUN-FLAT TIRE SIZE RANGE

| SIZE        | LOAD INDEX & SPEED RATING | O.D (MM) | S.W (MM) | STANDARD RIM | U.T.Q.G |       |
|-------------|---------------------------|----------|----------|--------------|---------|-------|
| 225/50ZRF17 | 98W XL                    | 658      | 233      | 7J           | 320AA   | ----- |
| 225/55ZRF17 | 101W XL                   | 680      | 233      | 7J           | 320AA   | ----- |
| 225/45ZRF18 | 95W XL                    | 659      | 225      | 7½J          | 320AA   | ----- |
| 245/45ZRF18 | 100W XL                   | 677      | 243      | 8J           | 320AA   | ----- |
| 245/50ZRF18 | 100W                      | 703      | 253      | 7½J          | 320AA   | ----- |
| 255/40ZRF18 | 99W XL                    | 661      | 260      | 9J           | 320AA   | ----- |
| 255/55RF18  | 109V XL                   | 737      | 265      | 8J           | 320AA   | ----- |
| 255/55ZRF18 | 109W XL                   | 737      | 265      | 8J           | 320AA   | ----- |
| 255/50RF19  | 107V XL                   | 739      | 265      | 8J           | 320AA   | ----- |
| 255/50ZRF19 | 107W XL                   | 739      | 265      | 8J           | 320AA   | ----- |



# SP756

## MUD TIRE

### PRODUCT FEATURES

Block block shoulder design increases the intensity of the pattern. The high and improve the passing performance. The interlaced middle block and different design on both side improve the cross-country performance. Fearless road conditions, professional MT tire



### Performance Test



## SIZE RANGE

| SIZE          | LOAD INDEX & SPEED RATING | STANDARD RIM | MAX. LOAD(kg) | MAX. PRESSURE(kpa) |
|---------------|---------------------------|--------------|---------------|--------------------|
| 35*12.5R17LT  | 121Q                      | 10.0J        | 1450.00       | 450                |
| 33*12.5R18LT  | 118Q                      | 10.0J        | 1320.00       | 450                |
| 35*12.5R18LT  | 123Q                      | 10.0J        | 1550.00       | 450                |
| LT235/75R15   | 116/113Q 110/107Q         | 6.5J         | 1.09          | 550                |
| 30*9.50R15LT  | 104Q                      | 7.5J         | 900.00        | 350                |
| 31*10.50R15LT | 109Q                      | 8.5J         | 1030.00       | 350                |
| LT245/75R16   | 120/116Q 114/111Q         | 7.0J         | 1.10          | 550                |
| LT265/75R16   | 123/120Q 119/116Q         | 7.5J         | 1.11          | 550                |
| LT285/75R16   | 126/123Q                  | 8.0J         | 1.10          | 550                |
| LT265/70R17   | 121/118Q                  | 8.0J         | 1.10          | 550                |
| LT285/70R17   | 121/118Q                  | 8.5J         | 1.10          | 550                |
| 33*12.50R20LT | 114Q                      | 10.0J        | 1180.00       | 450                |
| 35*12.50R20LT | 121Q                      | 10.0J        | 1450.00       | 450                |

# SP706

## RACE TIRE

### TIRE FEATURES WITH CARBON NANO-TUBES COMPOUND

1. Low rolling resistance more fuel-efficient eco-friendly
2. No static, more safety
3. High speed performance
4. Lower tread temperature and longer service life



## SIZE RANGE

| SIZE       | LOAD INDEX & SPEED RATING | O.D (MM) | S.W (MM) | STANDARD RIM | U.T.Q.G |       |
|------------|---------------------------|----------|----------|--------------|---------|-------|
| 195/50R15  | 82V                       | 577      | 201      | 6J           | 180AA   | ----- |
| 205/45ZR17 | 88W XL                    | 616      | 206      | 7J           | 180AA   | ----- |
| 215/45ZR17 | 91W XL                    | 626      | 213      | 7J           | 180AA   | ----- |
| 225/50ZR17 | 98W XL                    | 658      | 233      | 7J           | 180AA   | ----- |
| 245/45ZR18 | 100W XL                   | 677      | 243      | 8J           | 180AA   | ----- |

An aerial photograph of a winding asphalt road through a forest. The road curves through the trees, with several cars visible. The forest is divided into two distinct color zones: the left side shows vibrant autumn foliage in shades of red, orange, and yellow, while the right side shows lush green trees. A large, vertical, black graphic of a tire tread pattern is superimposed over the center of the image, partially obscuring the road and forest. The text 'SPORTRAK TIRES' is printed in large, white, bold, sans-serif capital letters across the middle of the tire tread graphic.

# SPORTRAK TIRES

BRING YOU A TASTE OF THE TRANSFORMATION OF  
THE FOUR SEASONS

# SP701

## COMMERCIAL TIRE VAN

### Performance Test



### SIZE RANGE

| SIZE   | LOAD INDEX & SPEED RATING | O.D (MM) | S.W (MM) | STANDARD RIM | U.T.Q.G |  |  |  |  |
|--------|---------------------------|----------|----------|--------------|---------|--|--|--|--|
| 15R12C | 88/86N-8PR                | 553      | 157      | 4.50B        | -----   |  |  |  |  |

# SP702

## COMMERCIAL TIRE VAN

### Performance Test



### SIZE RANGE

| SIZE    | LOAD INDEX & SPEED RATING | O.D (MM) | S.W (MM) | STANDARD RIM | U.T.Q.G |  |  |  |  |
|---------|---------------------------|----------|----------|--------------|---------|--|--|--|--|
| 185R14C | 102/100Q-8PR              | 650      | 188      | 5½J          | -----   |  |  |  |  |
| 195R14C | 105/103Q-8PR              | 666      | 198      | 5½J          | -----   |  |  |  |  |
| 185R15C | 98/97Q-6PR                | 677      | 189      | 5½J          | -----   |  |  |  |  |
| 195R15C | 106/104-8PRQ              | 693      | 196      | 5½J          | -----   |  |  |  |  |

# SP703

## COMMERCIAL TIRE VAN

### Performance Test



### SIZE RANGE

| SIZE      | LOAD INDEX & SPEED RATING | O.D (MM) | S.W (MM) | STANDARD RIM | U.T.Q.G |  |  |  |  |
|-----------|---------------------------|----------|----------|--------------|---------|--|--|--|--|
| 5.00R12C  | 83/81P-8PR                | 568      | 143      | 3.50B        | -----   |  |  |  |  |
| 5.50R13LT | 88/84P-8PR                | 620      | 160      | 4.00B        | -----   |  |  |  |  |

# SP711

## ALL SEASON HP TIRE

### Performance Test



### SIZE RANGE

| SIZE      | LOAD INDEX & SPEED RATING | O.D (MM) | S.W (MM) | STANDARD RIM | U.T.Q.G |  |  |  |  |
|-----------|---------------------------|----------|----------|--------------|---------|--|--|--|--|
| 145/70R12 | 69Q                       | 509.00   | 150.00   | 4.50B        | -----   |  |  |  |  |

# SP718

## TAXI PATTERN TIRE

### Performance Test



### SIZE RANGE

| SIZE        | LOAD INDEX & SPEED RATING | O.D (MM) | S.W (MM) | STANDARD RIM | U.T.Q.G |  |  |  |  |
|-------------|---------------------------|----------|----------|--------------|---------|--|--|--|--|
| 155R13C     | 85/83S-6PR                | 578      | 157      | 4½J          | 460AA   |  |  |  |  |
| 155/65R13   | 73T/73H                   | 532      | 157      | 4½J          | 460AA   |  |  |  |  |
| 165R13C     | 91/89S-6PR                | 596      | 167      | 4½J          | 460AA   |  |  |  |  |
| 165/65R13   | 77T                       | 544      | 170      | 5.00B        | 460AA   |  |  |  |  |
| 165/70R13   | 79T                       | 562      | 170      | 5.00B        | 460AA   |  |  |  |  |
| 165/70R13C  | 88/86S-6PR                | 562      | 170      | 5J           | 460AA   |  |  |  |  |
| 175/60R13   | 77H                       | 540      | 177      | 5J           | 460AA   |  |  |  |  |
| 175/70R13   | 82T                       | 576      | 177      | 5.00B        | 460AA   |  |  |  |  |
| 185/70R13   | 86T                       | 590      | 189      | 5.00B        | 460AA   |  |  |  |  |
| 165/60R14   | 75H                       | 554      | 170      | 5J           | 460AA   |  |  |  |  |
| 165/70R14   | 81H                       | 588      | 170      | 5J           | 460AA   |  |  |  |  |
| 175/65R14   | 82H                       | 584      | 177      | 5J           | 460AA   |  |  |  |  |
| 175/70R14   | 74T                       | 602      | 177      | 5J           | 460AA   |  |  |  |  |
| 175/70R14LT | 95/93S                    | 602      | 177      | 5J           | 460AA   |  |  |  |  |
| 175/70R14C  | 99/98S                    | 618      | 177      | 5J           | 460AA   |  |  |  |  |
| 185/60R14   | 82H                       | 578      | 189      | 5½J          | 460AA   |  |  |  |  |
| 185/65R14   | 86H                       | 596      | 189      | 5½J          | 460AA   |  |  |  |  |
| 185/70R14   | 88T                       | 616      | 189      | 5½J          | 460AA   |  |  |  |  |
| 185/80R14   | 91T                       | 652      | 184      | 5J           | 460AA   |  |  |  |  |
| 185R14C     | 102/100T-8PR              | 650      | 188      | 5½J          | 460AA   |  |  |  |  |
| 185R14LT    | 102/100T-8PR              | 650      | 188      | 5½J          | 460AA   |  |  |  |  |
| 195/60R14   | 86H                       | 590      | 201      | 6J           | 460AA   |  |  |  |  |
| 195/70R14   | 91H                       | 630      | 201      | 6J           | 460AA   |  |  |  |  |
| 195R14C     | 106/104S-8PR              | 666      | 198      | 5½J          | 460AA   |  |  |  |  |
| 195R14LT    | 105/103S-8PR              | 666      | 198      | 5½J          | 460AA   |  |  |  |  |
| 205/70R14   | 95H                       | 644      | 209      | 6J           | 460AA   |  |  |  |  |
| 175/65R15   | 84H                       | 609      | 177      | 5J           | 460AA   |  |  |  |  |
| 185/60R15   | 84/88H                    | 603      | 189      | 5½J          | 460AA   |  |  |  |  |
| 185/65R15   | 88H                       | 621      | 189      | 5½J          | 460AA   |  |  |  |  |
| 195/60R15   | 88H                       | 615      | 201      | 6J           | 460AA   |  |  |  |  |
| 195/65R15   | 91H                       | 635      | 201      | 6J           | 460AA   |  |  |  |  |

# SP712

ALL SEASON HP TIRE

Performance Test



## SIZE RANGE

| SIZE      | LOAD INDEX & SPEED RATING | O.D (MM) | S.W (MM) | STANDARD RIM | U.T.Q.G |  |  |  |  |
|-----------|---------------------------|----------|----------|--------------|---------|--|--|--|--|
| 155/70R12 | 73Q                       | 523      | 157      | 4.50B        | -----   |  |  |  |  |

# SP772

UHP TIRE



## SIZE RANGE

| SIZE       | LOAD INDEX & SPEED RATING | O.D (MM) | S.W (MM) | STANDARD RIM | U.T.Q.G |   |   |      |      |
|------------|---------------------------|----------|----------|--------------|---------|---|---|------|------|
| 225/55R19  | 99V                       | 731      | 233      | 7J           | -----   | C | B | 71dB | (C1) |
| 215/50R18  | 96V XL                    | 673      | 226      | 7J           | -----   | C | B | 72dB | (C1) |
| 225/65R17  | 102H                      | 724      | 228      | 6½J          | -----   | C | B | 71dB | (C1) |
| 245/45R19  | 102V                      | 703      | 243      | 8J           | -----   | C | B | 72dB | (C1) |
| 255/45ZR20 | 105W XL                   | 738      | 255      | 8½J          | -----   | C | B | 73dB | (C1) |
| 245/50R20  | 102V                      | 754      | 253      | 7½J          | -----   | C | B | 71dB | (C1) |

# SP762

UHP TIRE



## SIZE RANGE

| SIZE       | LOAD INDEX & SPEED RATING | O.D (MM) | S.W (MM) | STANDARD RIM | U.T.Q.G |   |   |      |      |
|------------|---------------------------|----------|----------|--------------|---------|---|---|------|------|
| 205/45ZR16 | 87W                       | 590      | 206      | 7J           | -----   | C | B | 72dB | (C1) |
| 215/40ZR17 | 87W                       | 604      | 218      | 7½J          | -----   | C | B | 72dB | (C1) |
| 215/45ZR17 | 91W                       | 626      | 213      | 7J           | -----   | C | B | 72dB | (C1) |
| 215/45ZR18 | 93W                       | 651      | 213      | 7J           | -----   | C | B | 72dB | (C1) |
| 215/50ZR17 | 95W XL                    | 648      | 226      | 7J           | -----   | C | B | 72dB | (C1) |
| 215/55R18  | 99V XL                    | 693      | 226      | 7J           | -----   | C | B | 72dB | (C1) |
| 225/40ZR18 | 92W XL                    | 637      | 230      | 8J           | -----   | C | B | 72dB | (C1) |
| 225/45ZR17 | 94W XL                    | 634      | 225      | 7½J          | -----   | C | B | 72dB | (C1) |
| 225/45ZR18 | 95W XL                    | 659      | 225      | 7½J          | -----   | C | B | 72dB | (C1) |
| 235/40ZR18 | 95W XL                    | 645      | 241      | 8½J          | -----   | C | B | 72dB | (C1) |
| 235/50ZR18 | 101W                      | 693      | 245      | 7½J          | -----   | C | B | 72dB | (C1) |
| 235/50R19  | 103V XL                   | 719      | 245      | 7½J          | -----   | C | B | 72dB | (C1) |
| 235/55R18  | 104V XL                   | 715      | 245      | 7½J          | -----   | C | B | 72dB | (C1) |
| 245/45ZR18 | 100W                      | 677      | 243      | 8J           | -----   | C | B | 72dB | (C1) |
| 265/50ZR20 | 111W XL                   | 774      | 277      | 8½J          | -----   | C | B | 73dB | (C1) |
| 265/40ZR21 | 105W XL                   | 745      | 271      | 9½J          | -----   | C | B | 73dB | (C1) |
| 265/45ZR21 | 104W                      | 771      | 266      | 9J           | -----   | C | B | 72dB | (C1) |

# SP782

R/T TIRE



## SIZE RANGE

| SIZE          | LOAD INDEX & SPEED RATING | O.D (MM) | S.W (MM) | STANDARD RIM | U.T.Q.G |  |  |  |  |
|---------------|---------------------------|----------|----------|--------------|---------|--|--|--|--|
| LT265/75R16   | 123/120S-10PR             | 810      | 267      | 7½J          | -----   |  |  |  |  |
| LT285/75R16   | 126/123S-10PR             | 840      | 286      | 8J           | -----   |  |  |  |  |
| LT265/70R17   | 121/118S-10PR             | 810      | 272      | 8J           | -----   |  |  |  |  |
| LT285/70R17   | 121/118S-10PR             | 838      | 292      | 8½J          | -----   |  |  |  |  |
| 33x12.50R17LT | 120Q-10PR                 | 832      | 318      | 10J          | -----   |  |  |  |  |
| 33x12.50R18LT | 118Q-10PR                 | 832      | 318      | 10J          | -----   |  |  |  |  |
| 37x13.50R18LT | 124Q-8PR                  | 934      | 345      | 11J          | -----   |  |  |  |  |
| P275/60R20    | 115T                      | 844      | 279      | 8J           | -----   |  |  |  |  |
| 33x12.50R20LT | 114Q-10PR                 | 832      | 318      | 10J          | -----   |  |  |  |  |
| 35x12.50R20LT | 121Q-10PR                 | 883      | 318      | 10J          | -----   |  |  |  |  |
| 37x13.50R20LT | 127Q-10PR                 | 934      | 345      | 11J          | -----   |  |  |  |  |
| 35x12.50R17LT | 125Q-10PR                 | 883      | 318      | 10J          | -----   |  |  |  |  |
| 35x12.50R18LT | 123Q-10PR                 | 883      | 318      | 10J          | -----   |  |  |  |  |

# SP792

## LIGHT TRUCK TIRE



### SIZE RANGE

| SIZE       | LOAD INDEX & SPEED RATING | O.D (MM) | S.W (MM) | STANDARD RIM | U.T.Q.G |   |   |           |  |
|------------|---------------------------|----------|----------|--------------|---------|---|---|-----------|--|
| 185R14C    | 102/100R-8PR              | 650      | 188      | 5½J          | -----   | C | B | 72dB (C2) |  |
| 185/75R16C | 104/102R-8PR              | 684      | 184      | 5J           | -----   | C | B | 72dB (C2) |  |
| 195/70R15C | 104/102R-8PR              | 655      | 201      | 6J           | -----   | C | B | 72dB (C2) |  |
| 205/65R16C | 107/105T-8PR              | 672      | 209      | 6J           | -----   | C | B | 72dB (C2) |  |
| 215/75R16C | 116/114R-10PR             | 728      | 216      | 6J           | -----   | C | B | 72dB (C2) |  |
| 235/65R16C | 115/113T-8PR              | 712      | 240      | 7J           | -----   | C | B | 72dB (C2) |  |
| 205/70R15C | 106/104R-8PR              | 669      | 209      | 6J           | -----   |   |   |           |  |
| 225/70R15C | 112/110R-10PR             | 697      | 228      | 6½J          | -----   |   |   |           |  |
| 195/75R16C | 107/105R-8PR              | 698      | 196      | 5½J          | -----   |   |   |           |  |
| 205/75R16C | 110/108R-8PR              | 714      | 203      | 5½J          | -----   |   |   |           |  |
| 215/65R16C | 109/107T-8PR              | 686      | 221      | 6½J          | -----   |   |   |           |  |
| 225/65R16C | 112/110T-8PR              | 698      | 228      | 6½J          | -----   |   |   |           |  |

# WPRO SP769

## COMMERCIAL TIRE VAN

- 1.High abrasion tread compound to enhance expected mileage markedly
- 2.Three straight mian pattern grooves to enhance outstanding wet grip
- 3.Reinforced tyre body and band structure to provide stronger load capacity



**white loop**

### SIZE RANGE

| SIZE       | LOAD INDEX & SPEED RATING | O.D (MM) | S.W (MM) | STANDARD RIM | U.T.Q.G |  |  |  |  |
|------------|---------------------------|----------|----------|--------------|---------|--|--|--|--|
| 185R14C    | 102/100Q                  | 650      | 188      | 5.5          | -----   |  |  |  |  |
| 195R14C    | 106/104Q                  | 666      | 198      | 5.5          | -----   |  |  |  |  |
| 195R15C    | 106/104Q                  | 693      | 196      | 5.5          | -----   |  |  |  |  |
| 195/70R15C | 104/102R                  | 655      | 201      | 6            | -----   |  |  |  |  |
| 205/70R15C | 106/104R                  | 669      | 209      | 6            | -----   |  |  |  |  |
| 225/70R15C | 112/110R                  | 697      | 228      | 6.5          | -----   |  |  |  |  |

# WPRO SP789

## ALL SEASON SUV TIRE A/T

- 1.High abrasion tread compound combined with widened tread width to enhance expected mileage markedly
- 2.Specially designed shoulder curve can effectively protect against overwear and avoid early damage
- 3.Multiple wide grooves to provide excellent drainage performance and wet grip
- 4.Reinforced tyre body and band structure to provide stronger load capacity



**white words**

### SIZE RANGE

| SIZE          | LOAD INDEX & SPEED RATING | O.D (MM) | S.W (MM) | STANDARD RIM | U.T.Q.G |  |  |  |  |
|---------------|---------------------------|----------|----------|--------------|---------|--|--|--|--|
| 215/70R16     | 100H                      | 708      | 221      | 6.5          | -----   |  |  |  |  |
| 265/65R17     | 112H                      | 776      | 272      | 8            | -----   |  |  |  |  |
| 265/70R16     | 112T                      | 778      | 272      | 8            | -----   |  |  |  |  |
| 265/70R17     | 115T                      | 804      | 272      | 8            | -----   |  |  |  |  |
| LT235/75R15   | 116/113S                  | 733      | 235      | 6.5          | -----   |  |  |  |  |
| LT235/80R17   | 120/117R                  | 808      | 235      | 6.5          | -----   |  |  |  |  |
| LT265/75R16   | 123/120R                  | 804      | 267      | 7.5          | -----   |  |  |  |  |
| LT285/75R16   | 126/123R                  | 834      | 286      | 8            | -----   |  |  |  |  |
| LT285/70R17   | 121/118S                  | 832      | 292      | 8.5          | -----   |  |  |  |  |
| LT245/75R16   | 120/116R                  | 774      | 248      | 7            | -----   |  |  |  |  |
| 245/70R16     | 107T                      | 750      | 248      | 7            | -----   |  |  |  |  |
| LT31*10.50R15 | 109R                      | 775      | 248      | 8.5          | -----   |  |  |  |  |

# WPRO SP799

## MUD TIRE

- 1.High abrasion tread compound to enhance expected mileage markedly
- 2.Specially designed shoulder curve can effectively protect against overwear and avoid early damage



**white words**

### SIZE RANGE

| SIZE          | LOAD INDEX & SPEED RATING | O.D (MM) | S.W (MM) | STANDARD RIM | U.T.Q.G |  |  |  |  |
|---------------|---------------------------|----------|----------|--------------|---------|--|--|--|--|
| 31×10.50R15LT | 109Q                      | 775      | 268      | 8.5          | -----   |  |  |  |  |
| LT285/75R16   | 126/123Q                  | 834      | 286      | 8            | -----   |  |  |  |  |
| LT245/75R16   | 120/116Q                  | 774      | 248      | 7            | -----   |  |  |  |  |
| LT285/70R17   | 121/118Q                  | 832      | 292      | 8.5          | -----   |  |  |  |  |
| LT265/75R16   | 123/120Q                  | 804      | 267      | 7.5          | -----   |  |  |  |  |
| LT265/70R17   | 121/118Q                  | 804      | 272      | 8            | -----   |  |  |  |  |
| 33×12.50R20LT | 114Q                      | 826      | 318      | 10           | -----   |  |  |  |  |
| 33×12.50R18LT | 118Q                      | 826      | 318      | 10           | -----   |  |  |  |  |
| 35×12.50R20LT | 121Q                      | 877      | 318      | 10           | -----   |  |  |  |  |

# SPORTRAK TIRES ICE AND SNOW PAVEMENT SAFE DRIVING CONTROL



## SP719

### WINTER TIRE

1. Specific directed pattern to improve driving stability effectively providing the drivers a better sense of driving
2. wide mian pattern grooves to enhance outstanding wet grip
3. professional snow compound combined with steel disc to ensure safe driving on inclement freezing conditions



### SIZE RANGE

| SIZE      | LOAD INDEX & SPEED RATING | STANDARD RIM | SIZE       | LOAD INDEX & SPEED RATING | STANDARD RIM |
|-----------|---------------------------|--------------|------------|---------------------------|--------------|
| 155/70R13 | 75T                       | 4.5          | 215/55R16  | 97V                       | 7            |
| 155/80R13 | 79T                       | 4.5          | 225/55R16  | 99H                       | 7            |
| 165/70R13 | 79T                       | 5            | 205/60R16  | 92H                       | 6            |
| 175/70R13 | 82T                       | 5            | 215/60R16  | 95H                       | 6.5          |
| 155/65R14 | 75T                       | 4.5          | 215/60R16  | 99V                       | 6.5          |
| 158/65R14 | 86H                       | 5.5          | 205/65R16C | 107/105R                  | 6            |
| 165/65R14 | 79T                       | 5            | 215/65R16  | 98H                       | 6.5          |
| 165/70R14 | 81T                       | 5            | 235/65R16C | 115/113R                  | 7            |
| 175/65R14 | 82T                       | 5            | 215/75R16C | 113/111R                  | 6            |
| 175/70R14 | 84T                       | 5            | 225/75R16C | 121/120R                  | 6            |
| 185/60R14 | 82H                       | 5.5          | 225/45R17  | 94H                       | 7.5          |
| 185/55R15 | 82H                       | 6            | 225/45R17  | 94V                       | 7.5          |
| 195/55R15 | 85H                       | 6            | 235/45R17  | 97V                       | 8            |
| 185/60R15 | 84H                       | 5.5          | 205/50R17  | 93V                       | 6.5          |
| 185/60R15 | 88T                       | 5.5          | 225/50R17  | 98H                       | 7            |
| 195/60R15 | 88H                       | 6            | 225/50R17  | 98V                       | 7            |
| 185/65R15 | 88H                       | 5.5          | 215/55R17  | 98V                       | 7            |
| 195/65R15 | 91H                       | 6            | 225/55R17  | 97H                       | 7            |
| 205/65R15 | 94H                       | 6            | 225/55R17  | 101V                      | 7            |
| 195/55R16 | 91H                       | 6            | 235/35R19  | 91V                       | 8.5          |
| 205/55R16 | 91V                       | 6.5          | 225/40R18  | 92V                       | 8            |
| 205/55R16 | 94V                       | 6.5          | 225/45R18  | 95V                       | 7.5          |
| 215/55R16 | 97H                       | 7            | 245/45R18  | 100V                      | 8            |

## SP775

### WINTER TIRE

1. 3D three- dimensional zigzag pattern design ensures the rigidity of the pattern piece while improving the grip, effectively preventing skidding on the road surface of rain and snow.
2. Reinforcement design, improve the pattern block stability, improve control performance and bearing capacity. Wide tire shoulder with trapezoidal mouth design, improve grip, provides excellent handling.



### SIZE RANGE

| SIZE       | LOAD INDEX & SPEED RATING | O.D (MM)  | S.W (MM) | STANDARD RIM | U.T.Q.G |  |  |  |  |
|------------|---------------------------|-----------|----------|--------------|---------|---|---|---|---|
| 195/60R16C | 99/97T                    | 775/730   | 375      | 6J           | -----   |   |   |   |   |
| 195/65R16C | 104/102T                  | 900/850   | 475      | 6J           | -----   |   |   |   |   |
| 195/70R15C | 104/102R                  | 900/850   | 450      | 6J           | -----   |   |   |   |   |
| 205/65R15C | 102/100T                  | 850/800   | 375      | 6J           | -----   |   |   |   |   |
| 205/65R16C | 107/105T                  | 975/925   | 475      | 6J           | -----   |   |   |   |   |
| 205/75R16C | 110/108R                  | 1060/1000 | 475      | 5½J          | -----   |   |   |   |   |
| 215/60R16C | 108/106T                  | 1000/950  | 475      | 6½J          | -----   |   |   |   |   |
| 215/65R16C | 109/107T                  | 1030/975  | 475      | 6½J          | -----   |   |   |   |   |
| 215/70R15C | 109/107R                  | 1030/975  | 450      | 6½J          | -----   |   |   |   |   |
| 215/75R16C | 113/111R                  | 1150/1090 | 475      | 6J           | -----   |   |   |   |   |
| 225/65R16C | 112/110R                  | 1120/1060 | 475      | 6½J          | -----   |   |   |   |   |
| 225/70R15C | 112/110R                  | 1120/1060 | 450      | 6½J          | -----   |   |   |   |   |
| 235/65R16C | 115/113R                  | 1215/1150 | 475      | 7J           | -----   |   |   |   |   |
| 185R14C    | 102/110R                  | 850/800   | 450      | 5½J          | -----   |   |   |   |   |
| 195R14C    | 106/104R                  | 950/900   | 450      | 5½J          | -----   |   |   |   |   |
| 205/70R15C | 106/104R                  | 950/900   | 450      | 6J           | -----   |   |   |   |   |

