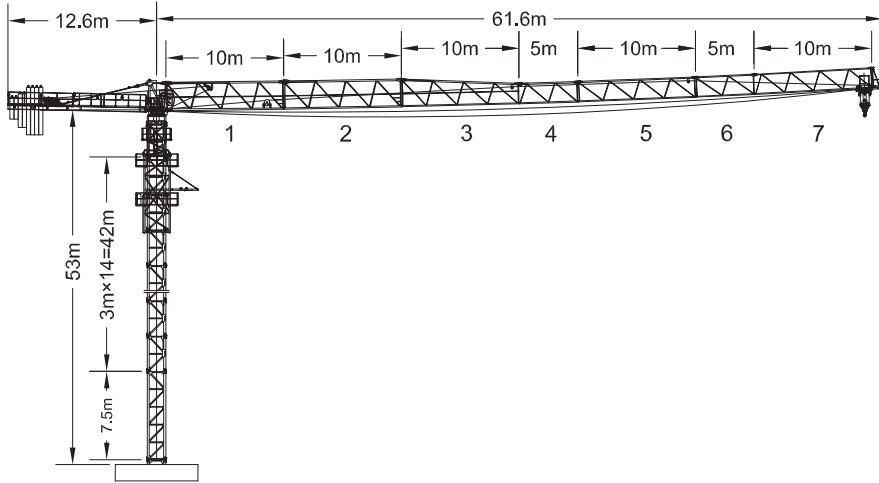




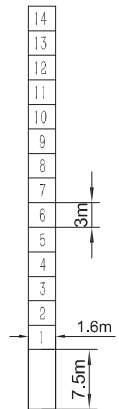
## 外形尺寸 Outline

8T



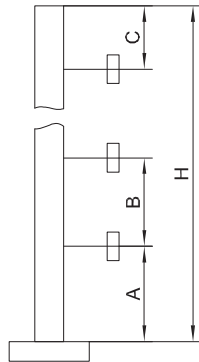
## 塔身截面 Mast

8T



## 附着 Anchorages

8T



Mast	A	B	C	H
L46A1	42m	24m	32m	200m

## 载荷特性表 Load Diagrams

8T

60m		Amplitude (m)	3.0-25.2							26	28	30	32	34	36	38	40	42	44	46	48	50	52	54	56	58	60	
		Capacity (kg)	4000								3863	3540	3260	3015	2799	2607	2435	2280	2140	2013	1897	1790	1692	1602	1518	1440	1368	1300
		Amplitude (m)	3.0-13.4	14	16	18	20	22	24	26	28	30	32	34	36	38	40	42	44	46	48	50	52	54	56	58	60	
55m		Capacity (kg)	8000	7640	6590	5773	5120	4585	4140	3763	3440	3160	2915	2669	2507	2335	2180	2040	1913	1797	1690	1592	1502	1418	1340	1268	1200	
		Amplitude (m)	3.0-26.6								28	30	32	34	36	38	40	42	44	46	48	50	52	54	55			
		Capacity (kg)	4000								3779	3483	3224	2996	2793	2611	2448	2300	2165	2042	1930	1826	1730	1642	1600			
50m		Amplitude (m)	3.0-14.2	16	18	20	22	24	26	28	30	32	34	36	38	40	42	44	46	48	50	52	54	55				
		Capacity (kg)	8000	7009	6146	5455	4890	4419	4021	3679	3383	3124	2896	2693	2511	2348	2200	2065	1942	1830	1726	1630	1542	1500				
		Amplitude (m)	3.0-27.4								28	30	32	34	36	38	40	42	44	46	48	50						
45m		Capacity (kg)	4000							3911	3607	3340	3105	2896	2708	2540	2388	2249	2123	2007	1900							
		Amplitude (m)	3.0-14.6	16	18	20	22	24	26	28	30	32	34	36	38	40	42	44	46	48	50							
		Capacity (kg)	8000	7240	6351	5640	5058	4573	4163	3811	3507	3240	3005	2796	2608	2440	2288	2149	2023	1907	1800							
40m		Amplitude (m)	3.0-28.6															30	32	34	36	38	40	42	44	45		
		Capacity (kg)	4000															3780	3503	3258	3040	2845	2670	2511	2367	2300		
		Amplitude (m)	3.0-15.1	16	18	20	22	24	26	28	30	32	34	36	38	40	42	44	45									
35m		Capacity (kg)	8000	7565	6640	5900	5295	4790	4363	3997	3680	3403	3158	2940	2745	2570	2411	2267	2200									
		Amplitude (m)	3.0-28.8															30	32	34	36	38	40					
		Capacity (kg)	4000															3820	3540	3293	3073	2877	2700					
30m		Amplitude (m)	3.0-15.3	16	18	20	22	24	26	28	30	32	34	36	38	40												
		Capacity (kg)	8000	7640	6707	5960	5349	4840	4409	4040	3720	3440	3193	2973	2777	2600												
		Amplitude (m)	3.0-29															30	32	34	35							
25m		Capacity (kg)	4000															3843	3562	3314	3200							
		Amplitude (m)	3.0-15.5	16	18	20	22	24	26	28	30	32	34	35														
		Capacity (kg)	8000	7684	6746	5995	5381	4869	4436	4065	3743	3462	3214	3100														
20m		Amplitude (m)	3.0-29.4																									
		Capacity (kg)	4000																									
		Amplitude (m)	3.0-15.6	16	18	20	22	24	26	28	30																	
	Capacity (kg)	8000	7790	6840	6080	5458	4940	4502	4126	3800																		

## 机构 Mechanisms

8T

名称 Name	工作速度 (m/min) Speed	起重量 (t) Capacity	容绳量 (m) Rope capacity	功率 (KW) Power
起升机构 Hoisting	二倍率 Rate II	0-80	4	30
	四倍率 Rate IV	0-40	8	
变幅机构 Trolleying		0-40		4
回转机构 Slewing		0-0.8		4x2

## 平衡重 Counter weight

8T

工作幅度 (m) Radius	60	55	50	45	40	35	30
平衡重A (piece) Balancing weight A	4	4	4	4	3	3	2
平衡重B (piece) Balancing weight B	1	1	/	/	1	1	1
平衡重C (piece) Balancing weight C	2	1	2	1	1	/	1
平衡重总重 (Kg) Total balancing weight	17800	16500	15800	14500	13200	11900	9900

A=3300Kg, B=2000Kg, C=1300Kg