

2017
2018
2019
2020
• 2021 •



TRUCK & BUS RADIAL TIRES

SICHUAN KALEVEI TECHNOLOGY CO., LTD.

**PRODUCT
MANUAL** //

 **SICHUAN KALEVEI TECHNOLOGY CO., LTD.** 

Add: No.1 Kalevei Industrial Road, Industrial Park, Jianyang, Sichuan, China

Zip Code: 641400

Tel: +86 28 27513808

Fax: +86 28 27513809

E-mail: sales@kalevei.com

Web site: www.hdyre.com

www.kalevei.com



Safe Environmental-
friendly Fuel-
saving Wear
resistance



COMPANY PROFILE

Sichuan Kalevei Technology Co., Ltd. (hereinafter referred to as Kalevei Technology) is a high-tech share Co., Ltd. jointly established by Sichuan Haida Rubber Group Co., Ltd. as main sponsor with well-known enterprises in accordance with the modern enterprise system, integrates superior resources, Kalevei Technology is the R&D and manufacturing base of all-steel radial truck tires in western China. The company's brands include HAIDA, COPARTNER, YINLU and LIGHTEN etc.

Kalevei Technology is located in Jianyang Industrial Park, Chengdu, Sichuan Province, covering an area of more than 165 acres, only 56 kilometers away from the downtown area of Chengdu. It is adjacent to new Tianfu International Airport, Chengdu-Chongqing High-speed Rail and express way, and Luzhou, Yibin, Chongqing terminal of the Yangtze River, The river and sea are very convenient for transportation and logistics.

Kalevei Technology invested 2.28 billion RMB YUAN (about 350 million dollars) for building production line of TBR tires with annual production of 2.1 million sets or PCS. Up to now, the first phase of production line has fulfilled its goal perfectly. The company has introduced the globally advanced technology, production equipment and testing equipment, introduced marketing, management and technical talents in China, and has established perfect quality control, marketing and customer service system. Achieved IATF16949 quality management system certification, GB/T24001 environmental certification, GB/T28001 occupational health and safety certification; obtained the national compulsory 3C certification and U.S. DOT certification, the United States SMART WAY certification, EU ECE certification, EU environmental and noise certification; owning products import and export right.

Kalevei Technology has always been adhering to the business philosophy of regarding customer as basis and product quality as our life and technology as our source as well as honesty as fundamental, inheriting corporate culture of "people-oriented, customer first, the pursuit of excellence, the long-term interests", taking product quality as the core, focusing on brand building, continuing to promote technological progress and innovation, in favor of our customers with high-tech, high-quality and high-value-added products and value-added services to win-win fortune for our customers.





GROUP PROFILE

Sichuan HAIDA Rubber Group Co.,Ltd.(hereinafter referred to as HAIDA GROUP) was founded in 1970, it's a wholly owned subsidiary of WULIANGYE GROUP, national appointed and exclusive large scale backbone enterprise in Sichuan Province, committed itself in R&D, manufacturing and marketing of TBR,PCR,TBB tires, it's the largest demonstration base of research and development and production for tires in western China.

HAIDA GROUP located in Jian yang, Chengdu, Sichuan province, nearby TIANFU int'l airport and high speed train and railway station, transportation is very convenient by road or by river and air, its famous brand name covering "HAIDA", "KALEVEI", "MILEKING", "COPARTNER", "LIGHTEN", "YINLU", "TIANFU" etc., including TBR PCR and TBR tires of three categories, twenty five series, more than 1000 varieties of sizes, applying construction machinery, heavy-duty trucks, light trucks, large-scale bus, medium-sized bus, car, SUV and other commercial vehicles and passenger car of all most popular vehicles. HAIDA brand is the world-renowned brand, recommended PCR brand by China's rubber industry, famous brand of Sichuan Province; "TIANFU" trademark is well-known trademark in China.

HAIDA GROUP certificated by ISO/TS16949 and ISO9001,ISO14001 GBT28001, CCC, DOT, ECE,GCC,GSO etc., obtained thirty seven national invention patent and practical patent, its brands enjoyed and favored by domestic and international customers with tire's excellent and stable quality.

Its marketing segments consists of local maintenance, OEM and overseas marketing, and its overseas marketing and sales volume reached US\$113 million, marketing area including North America, South America, Europe, Middle East, Oceania, African and southeast Asia

of more than 200 countries or regions. HAIDA GROUP established long-term strategic partnership with Changan Ford, Sichuan Hyundai, Dongfeng Automobile, Dayun Automobile, Sinotruk, Chery automobile, Changan, General Motors, BAIC Motor, Zhongxing Auto, Suzhou Golden Dragon, Jiangling Motors, JAC, FAW and other vehicle factories. HAIDA GROUP owning more than 300 mainstream dealers in local maintenance market of all provinces, autonomous regions and municipalities throughout all China.

HAIDA GROUP main subsidiaries including Sichuan Tire & Rubber Co., Ltd., mainly produce PCR and TBB tires and Sichuan Kalevei Technology Co., Ltd.,mainly produce TBR tires. Its secondary business subsidiaries: Sichuan Jianyang Tianhai Engineering Co., Ltd., Sichuan Haihong Rubber Products Co., Ltd., Sichuan Jianyang Tianli special Rubber products Co., Ltd., Sichuan Chuangui Tianwei tire Co., Ltd., Sichuan Jianyang Chuangxiang Tianfa logistics Co., Ltd., their business scope including: rubber and electronics, special rubber products, logistics and transport, etc.. The group has achieved diversified development.

HAIDA GROUP keeps continuous development and innovation, it has established a national technology center and post-doctoral workstations; its tire yearly production capacity is expected to reach 24 million pcs or sets in 2025, in which 20 million for PCR tires, 3.0 million for TBR tires, 1.0 million for TBB tires.

COMPANY HONOR

- 🕒 Sichuan Provincial Labor Award
- 🕒 Enterprise Technology Center in Sichuan Province
- 🕒 Hi-Tech enterprises in Sichuan
- 🕒 National Experimental Testing Center
- 🕒 "Mining use TBR tire with high strength and resistance to cutting" won the Sichuan Provincial Science and Technology Progress Award
- 🕒 "Research and development as well as application into tires for key technologies of high gelling formulation" won the Sichuan Provincial Science and Technology Progress Award



SYSTEM CERTIFICATIONS

🕒 Since its establishment, Sichuan Kalevei Technology Co., Ltd. has obtained IATF16949 Quality Management System Certification, GB/T24001 Environmental certification, GB/T8001 Occupational Health and Safety certification; Passed the China Compulsory Certification CCC and U.S. DOT certification, U.S. SMARWAY certification, EU ECE certification, Gulf GCC certification, EU Environmental and Noise Certification; obtained the right to import and export product.



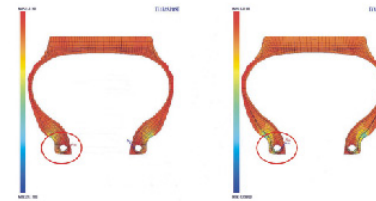
TECHNICAL CHARACTERISTICS

New type structure with double tread

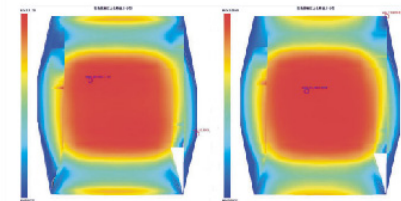


🕒 Tires performance improved with sub-tread made by excellent low heat compound and optimized construction process.

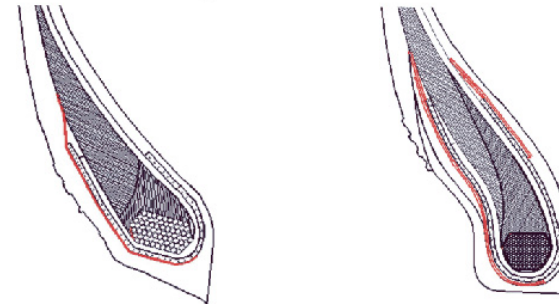
Optimal design



Tire tread ground stress analysis



Design of tire bead reinforced



🕒 Design of tubeless type tire bead reinforced 🕒 Design of tube type tire bead reinforced

Tire loading capability improved greatly with strengthened tire bead using a multilayer and high strength fiber fabric in the toes of tire.

Above pictures are only for reference

PRODUCTS POSITIONING

Introduction & Recommendation for Seven Categories Patterns Marketing

Long Haul High Speed



HD189 HD355 HD586 HD588 HD928 HD929 HD961 HD962 HD963
P08 P09 P10 P11 P12 P13 P14 P15 P16



HD965 HD968 HD989 HD999
P17 P18 P19 P20

Medium & Long Haul



HD157 HD158 HD160 HD162 HD167 HD168 HD169 HD180 HD183
P21 P22 P23 P24 P25 P26 P27 P28 P29



HD186 HD580 HD580++ HD966
P30 P31 P32 P33

Medium & Short Haul



HD260 HD261 HD262 HD263 HD268 HDA68 HD269 HD285
P34 P35 P36 P37 P38 P39 P40 P41

Mining & Building Site



HD762 HD765 HD769 HD769A HD776 HD777K HD779K HD786 HD788
P42 P43 P44 P45 P46 P47 P48 P49 P50



HD788K HD789K
P51 P52

Winter Series



HD150 HD152 HD159
P53 P54 P55

North America Series



HDD728 HDS228 HDS226 HDT128
P56 P57 P58 P59

Special Trailer Series



HD161 HD182
P60 P61

Long Haul High Speed

HD189

Load performance ★★★★★ Wear performance ★★★★★
 Speed performance ★★★★★ Transport distance ★★★★★



○ Wheel position recommended ○ Wheel position allowed ○ Wheel position not recommended



- Design of Two straight and one bend with longitudinal and Transverse tortuous grooves provide excellent driving performance;
- Golden section ratio pattern block with optimized pattern block by the ultra-high wear-resistant tread formula for excellent wear resistance;
- The closed shoulder with widened pattern block to avoid abnormal wear of the tire shoulder.



MAIN SIZES AND PARAMETERS

Size	PR	Loading Index	Speed Rating	Standard Rim	Section Width (mm)	Overall Diameter (mm)	Tread Depth (mm)
12R22.5	18	152/149	L	9.00	300	1085	15.5

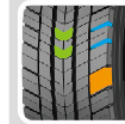
Long Haul High Speed

HD355

Load performance ★★★★★ Wear performance ★★★★★
 Speed performance ★★★★★ Transport distance ★★★★★



○ Wheel position recommended ○ Wheel position allowed ○ Wheel position not recommended



- Widening and deepening pattern with high saturation and variable pitch for low noise and fuel saving;
- Open tires's shoulders pattern designed for excellent heat dissipation;
- The unique gradient pattern designed not only guarantees the driving performance in the early and mid-term but also ensures more excellent wear resistance in the later.



MAIN SIZES AND PARAMETERS

Size	PR	Loading Index	Speed Rating	Standard Rim	Section Width (mm)	Overall Diameter (mm)	Tread Depth (mm)
12R22.5	18	152/149	L	9.00	300	1085	20.0
315/80R22.5	20	157/154	L	9.00	312	1076	20.0

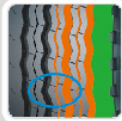
Long Haul High Speed

HD586

Load performance ★★★★★ Wear performance ★★★★★
 Speed performance ★★★★★ Transport distance ★★★★★



○ Wheel position recommended ○ Wheel position allowed ○ Wheel position not recommended



- Four consecutive main grooves and three auxiliary fine grooves to provide better drainage and grip performance;
- Design of proper proportion for block and groove to provide better wear resistance performance;
- Design of broader tires shoulder can prevent partial wear better.



MAIN SIZES AND PARAMETERS

Size	PR	Loading Index	Speed Rating	Standard Rim	Section Width (mm)	Overall Diameter (mm)	Tread Depth (mm)
385/65R22.5	20	160	K	11.75	389	1072	15.5

Long Haul High Speed

HD588

Load performance ★★★★★ Wear performance ★★★★★
 Speed performance ★★★★★ Transport distance ★★★★★



○ Wheel position recommended ○ Wheel position allowed ○ Wheel position not recommended



- Design of five pattern grooves provide better slip and wet resistance as well as safe handling.
- Design of proper proportion for block and groove provide better wear performance of resistance.



MAIN SIZES AND PARAMETERS

Size	PR	Loading Index	Speed Rating	Standard Rim	Section Width (mm)	Overall Diameter (mm)	Tread Depth (mm)
385/65R22.5	20	160	K	11.75	389	1072	15.5

Long Haul High Speed

HD928

Load performance ★★★★★ Wear performance ★★★★★
 Speed performance ★★★★★ Transport distance ★★★★★



○ Wheel position recommended ○ Wheel position allowed ○ Wheel position not recommended



- Special tire tread formula, provide better wear resistance performance, increase tire mileage.
- Design of Broader tire shoulder can decrease tire abrasion.
- Special tire shoulder design, low heating formula to decrease shoulder heating, increase tire durable performance.
- Diamond-shaped stones emitter at the bottom of grooves combines functionality and aesthetics.



MAIN SIZES AND PARAMETERS

Size	PR	Loading Index	Speed Rating	Standard Rim	Section Width (mm)	Overall Diameter (mm)	Tread Depth (mm)
12R22.5	18	152/149	M	9.00	300	1085	14.5
275/70R22.5	16	146/143	M	8.25	276	958	14.5

Long Haul High Speed

HD929

Load performance ★★★★★ Wear performance ★★★★★
 Speed performance ★★★★★ Transport distance ★★★★★



○ Wheel position recommended ○ Wheel position allowed ○ Wheel position not recommended



- Closed pattern on shoulder designed to improve shoulder rigidity and prevent partial wear.
- The tread with ultra-high wear-resistant formula provides excellent wear resistance and durability.



MAIN SIZES AND PARAMETERS

Size	PR	Loading Index	Speed Rating	Standard Rim	Section Width (mm)	Overall Diameter (mm)	Tread Depth (mm)
12R22.5	18	152/149	M	9.00	300	1085	15.5

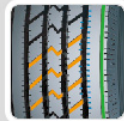
Long Haul High Speed

HD961

Load performance ★★★★★ Wear performance ★★★★★
 Speed performance ★★★★★ Transport distance ★★★★★



○ Wheel position recommended ○ Wheel position allowed ○ Wheel position not recommended



- Design of oblique pattern block and zigzag grooves provide better outstanding steering performance and stability as well as safe and good handling performance on dry and wet road;
- Small steel disc helps to tire's heat dissipation and the applicability of different wheel location;
- Tire shoulder circumferential grooves provide better partial wearing resistance.



MAIN SIZES AND PARAMETERS

Size	PR	Loading Index	Speed Rating	Standard Rim	Section Width (mm)	Overall Diameter (mm)	Tread Depth (mm)
295/80R22.5	18	152/149	M	9.00	298	1044	15.0

Long Haul High Speed

HD962

Load performance ★★★★★ Wear performance ★★★★★
 Speed performance ★★★★★ Transport distance ★★★★★



○ Wheel position recommended ○ Wheel position allowed ○ Wheel position not recommended



- Four consecutive main grooves and three auxiliary fine grooves provide outstanding drainage and grip performance.
- Design of pattern block with V type grooves provide better driving steering and driving performance.



MAIN SIZES AND PARAMETERS

Size	PR	Loading Index	Speed Rating	Standard Rim	Section Width (mm)	Overall Diameter (mm)	Tread Depth (mm)
215/75R17.5	16	127/124	M	6.00	211	767	11.5
235/75R17.5	16	132/129	M	6.75	233	797	11.5
315/80R22.5	20	157/154	L	9.00	312	1076	15

Long Haul High Speed

HD963

Load performance ★★★★★ Wear performance ★★★★★
 Speed performance ★★★★★ Transport distance ★★★★★



○ Wheel position recommended ● Wheel position allowed ○ Wheel position not recommended



- Four consecutive grooves and oblique grooves provide outstanding performance of steering and stability;
- Special design with stones emitter at the bottom of pattern grooves prevent sandwiching stones from damaging tires;
- Small sipes help to tire's heat dissipation and the applicability of different wheel location.



Long Haul High Speed

HD965

Load performance ★★★★★ Wear performance ★★★★★
 Speed performance ★★★★★ Transport distance ★★★★★



○ Wheel position recommended ● Wheel position allowed ○ Wheel position not recommended



- Four consecutive main grooves and three auxiliary fine grooves provide outstanding drainage and grip performance;
- Small sipes provide better grip performance and wet & slip resistance.



MAIN SIZES AND PARAMETERS

Size	PR	Loading Index	Speed Rating	Standard Rim	Section Width (mm)	Overall Diameter (mm)	Tread Depth (mm)
295/80R22.5	18	152/149	M	9.00	298	1044	15
315/70R22.5	18	151/148	M	9.00	312	1014	16.5
315/80R22.5	20	157/154	L	9.00	312	1076	15

MAIN SIZES AND PARAMETERS

Size	PR	Loading Index	Speed Rating	Standard Rim	Section Width (mm)	Overall Diameter (mm)	Tread Depth (mm)
11R22.5	18	149/146	M	8.25	279	1054	14.5

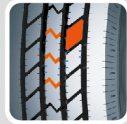
Long Haul High Speed

HD968

Load performance ★★★★★ Wear performance ★★★★★
 Speed performance ★★★★★ Transport distance ★★★★★



○ Wheel position recommended ○ Wheel position allowed ○ Wheel position not recommended



■ Design of oblique pattern block and zigzag grooves provide better outstanding steering performance and stability as well as safe and good handling performance on dry and wet road;
 ■ Small sipes provide better heat dissipation and the applicability of different wheel location.



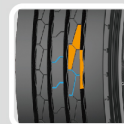
Long Haul High Speed

HD989

Load performance ★★★★★ Wear performance ★★★★★
 Speed performance ★★★★★ Transport distance ★★★★★



○ Wheel position recommended ○ Wheel position allowed ○ Wheel position not recommended



■ Design of oblique pattern block and zigzag grooves provide better outstanding steering performance and stability as well as safe and good handling performance on dry and wet road;
 ■ Small sipes help to heat dissipation and the applicability of different wheel location.



MAIN SIZES AND PARAMETERS

Size	PR	Loading Index	Speed Rating	Standard Rim	Section Width (mm)	Overall Diameter (mm)	Tread Depth (mm)
11R22.5	16	146/143	M	8.25	279	1054	14.5
11R24.5	16	149/146	M	8.25	279	1104	14.5
315/80R22.5	20	157/154	L	9.00	312	1076	16.5

MAIN SIZES AND PARAMETERS

Size	PR	Loading Index	Speed Rating	Standard Rim	Section Width (mm)	Overall Diameter (mm)	Tread Depth (mm)
7.00R16LT	14	118/114	M	5.50F	200	775	10.0
12R22.5(G)	18	152/149	M	9.00	300	1085	17.5
225/80R17.5	16	129/127	M	6.75	226	805	11.0
265/70R19.5	18	143/141	M	7.50	262	867	14.5
275/80R22.5	18	149/146	M	8.25	276	1012	15.0
295/60R22.5	18	150/147	M	9.00	292	930	15.0
295/80R22.5	18	152/149	M	9.00	298	1044	15.0

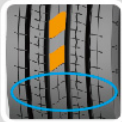
Long Haul High Speed

HD999

Load performance ★★★★★ Wear performance ★★★★★
 Speed performance ★★★★★ Transport distance ★★★★★



○ Wheel position recommended ○ Wheel position allowed ○ Wheel position not recommended



- Variable pitch design for low noise, fuel saving and excellent high speed performance;
- The special four-layer belt design for improving the steering stability of the tire.



MAIN SIZES AND PARAMETERS

Size	PR	Loading Index	Speed Rating	Standard Rim	Section Width (mm)	Overall Diameter (mm)	Tread Depth (mm)
295/80R22.5(G)	18	152/149	M	9.00	298	1044	16.0

Medium & Long Haul

HD157

Load performance ★★★★★ Wear performance ★★★★★
 Speed performance ★★★★★ Transport distance ★★★★★



○ Wheel position recommended ○ Wheel position allowed ○ Wheel position not recommended



- Widened tread improves tire grounded pressure, one-way pattern groove provides better driving performance and wet and slip resistance;
- Big ratio of blocks and grooves improves operation stability and safety. Special design of stone emitter at the bottom of pattern groove prevents sandwiching stone, and protect the bottom of pattern groove effectively;
- Open shoulder improves tire's heat dissipation.



MAIN SIZES AND PARAMETERS

Size	PR	Loading Index	Speed Rating	Standard Rim	Section Width (mm)	Overall Diameter (mm)	Tread Depth (mm)
295/80R22.5	18	152/149	L	9.00	298	1044	19
295/80R22.5	20	154/151	L	9.00	298	1044	19
315/70R22.5	18	151/148	L	9.00	312	1014	23
315/80R22.5	20	157/154	L	9.00	312	1076	19

Medium & Long Haul

HD158

Load performance ★★★★★ Wear performance ★★★★★
 Speed performance ★★★★★ Transport distance ★★★★★



○ Wheel position recommended
 ○ Wheel position allowed
 ○ Wheel position not recommended



- Special block type pattern provides better driving performance;
- Special groove provides pattern self-clean performance and protect the bottom of groove;
- Open shoulder improves tire's heat dissipation.



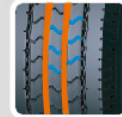
Medium & Long Haul

HD160

Load performance ★★★★★ Wear performance ★★★★★
 Speed performance ★★★★★ Transport distance ★★★★★



○ Wheel position recommended
 ○ Wheel position allowed
 ○ Wheel position not recommended



- Four consecutive main grooves and three auxiliary fine grooves provide outstanding drainage and grip performance.
- Design of pattern block with V type grooves provide better steering and driving performance.



MAIN SIZES AND PARAMETERS

Size	PR	Loading Index	Speed Rating	Standard Rim	Section Width (mm)	Overall Diameter (mm)	Tread Depth (mm)
11R22.5	16	146/143	L	8.25	279	1054	18
11R24.5	16	149/146	L	8.25	279	1104	18
295/80R22.5	18	152/149	L	9.00	298	1044	19
315/80R22.5	20	157/154	L	9.00	312	1076	19

MAIN SIZES AND PARAMETERS

Size	PR	Loading Index	Speed Rating	Standard Rim	Section Width (mm)	Overall Diameter (mm)	Tread Depth (mm)
6.00R14LT	10	100/96	L	4½J	170	680	9.5
6.00R15LT	10	101/97	L	4½J	170	705	9.5
6.50R16LT	12	110/105	M	5.50F(TT)	185	750	9.5
				5½J(TL)			
7.00R16LT	14	118/114	M	5.50F(TT)	200	775	10
				5½J(TL)			

Medium & Long Haul

HD162

Load performance ★★★★★ Wear performance ★★★★★
 Speed performance ★★★★★ Transport distance ★★★★★



○ Wheel position recommended ○ Wheel position allowed ○ Wheel position not recommended



- Concise three longitudinal grooves and oblique grooves in the middle of pattern block is not only suitable for steering wheel positions but also for different wheels positions;
- Design of big pattern block in the middle of tread provides good abrasion resistance.



Medium & Long Haul

HD167

Load performance ★★★★★ Wear performance ★★★★★
 Speed performance ★★★★★ Transport distance ★★★★★



○ Wheel position recommended ○ Wheel position allowed ○ Wheel position not recommended



- Broad tread and deep groove pattern, transversal groove, and shoulder transversal pattern to provide good driving performance and abrasion resistance;
- Optimized ratio of patterns block and optimized pattern block angle improve tires stability and abrasion resistance as well as driving performance;
- Special design with stones emitter at the bottom of pattern grooves prevents sandwiching stones from damaging tires.



MAIN SIZES AND PARAMETERS

Size	PR	Loading Index	Speed Rating	Standard Rim	Section Width (mm)	Overall Diameter (mm)	Tread Depth (mm)
12R22.5	18	152/149	L	9.00	300	1085	17.5

MAIN SIZES AND PARAMETERS

Size	PR	Loading Index	Speed Rating	Standard Rim	Section Width (mm)	Overall Diameter (mm)	Tread Depth (mm)
11R22.5	18	149/146	L	8.25	279	1054	15.5
12R22.5(AG)	18	152/149	L	9.00	300	1085	16.0
13R22.5	18	154/151	K	9.75	320	1124	17.5

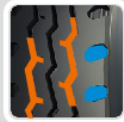
Medium & Long Haul

HD168

Load performance ★★★★★ Wear performance ★★★★★
 Speed performance ★★★★★☆ Transport distance ★★★★★☆



○ Wheel position recommended
 ○ Wheel position allowed
 ○ Wheel position not recommended



- Classic zigzag type patterns and more scientific pattern angle is suitable for steering positions;
- Transversal and open pattern on tires shoulder provides better gripping capability.



MAIN SIZES AND PARAMETERS

Size	PR	Loading Index	Speed Rating	Standard Rim	Section Width (mm)	Overall Diameter (mm)	Tread Depth (mm)
6.50R16LT	12	110/105	L	5.50F	185	750	10.0
7.00R16LT	14	118/114	L	5.50F	200	775	10.5
7.50R16LT	16	125/121	L	6.00G	215	805	12.0
8.25R16LT	16	128/124	L	6.50H	235	855	12.5
8.25R20	16	139/137	M	6.5	236	974	13.5
9.00R20	16	144/142	K	7.0	259	1019	13.5
10.00R20	18	149/146	J	7.5	278	1054	14.5
11.00R20	18	152/149	J	8.0	293	1085	16.0
12.00R20	18	154/151	K	8.5	315	1125	15.5
12.00R20	20	156/153	K	8.5	315	1125	15.5
11R22.5	16	148/145	L	8.25	279	1054	15.0
11R24.5	16	149/146	L	8.25	279	1104	16.0
12R22.5(AG)	18	152/149	L	9.00	300	1085	15.0
255/70R22.5	16	140/137	L	7.50	255	930	13.5
295/75R22.5	16	167/164	L	9.00	312	1076	16.0
315/80R22.5	20	157/154	L	9.00	312	1076	16.0
315/80R22.5	22	167/164	L	9.00	312	1076	16.0

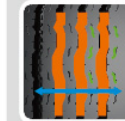
Medium & Long Haul

HD169

Load performance ★★★★★☆ Wear performance ★★★★★☆
 Speed performance ★★★★★☆ Transport distance ★★★★★☆



○ Wheel position recommended
 ○ Wheel position allowed
 ○ Wheel position not recommended



- Design of four consistent grooves and slant-edge pattern provide outstanding drainage and grip performance;
- Widened tread to improve tire's abrasion resistance and longer tire mileage;
- Design of unique sipes helps to tire's heating dissipation and suitability for different wheels positions.



MAIN SIZES AND PARAMETERS

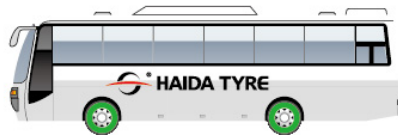
Size	PR	Loading Index	Speed Rating	Standard Rim	Section Width (mm)	Overall Diameter (mm)	Tread Depth (mm)
7.50R16LT	16	125/121	L	6.00G	215	805	12.0
8.25R16LT	16	128/124	L	6.50H	235	855	13.0
9.5R17.5	18	143/141	M	6.75	240	842	12.0
ST225/90R16	14	128/124	L	6J	220	808	12.0
ST235/80R16	14	129/125	M	6½J	235	782	10.0
ST235/85R16	14	132/127	M	6½J	235	806	10.0

Medium & Long Haul

HD180

Load performance ★★★★★
Speed performance ★★★★★

Wear performance ★★★★★
Transport distance ★★★★★



○ Wheel position recommended
○ Wheel position allowed
○ Wheel position not recommended



- Three consecutive main grooves and oblique grooves provide outstanding drainage and grip performance;
- Design of pattern block with V type grooves provide better steering and driving performance.



Medium & Long Haul

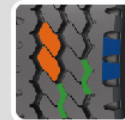
HD183

Load performance ★★★★★
Speed performance ★★★★★

Wear performance ★★★★★
Transport distance ★★★★★



○ Wheel position recommended
○ Wheel position allowed
○ Wheel position not recommended



- Specially designed tread pattern for stronger grip performance tire;
- Optimized design of widened side blocks to improve shoulder rigidity and improve tire wear resistance;
- The angle of the groove is designed to prevent stones from being trapped and improve the support performance of the block.



MAIN SIZES AND PARAMETERS

Size	PR	Loading Index	Speed Rating	Standard Rim	Section Width (mm)	Overall Diameter (mm)	Tread Depth (mm)
215/70R17.5	14	123/121	L	6.00	211	747	11

MAIN SIZES AND PARAMETERS

Size	PR	Loading Index	Speed Rating	Standard Rim	Section Width (mm)	Overall Diameter (mm)	Tread Depth (mm)
7.50R16(K)	14	122/118	K	6.0G	215	805	15.0
10.00R20(K)	18	149/146	J	7.5	278	1054	17.0
12.00R20(K)	20	156/153	J	8.5	315	1125	16.5
12R22.5	18	152/149	L	9.00	300	1085	16.0
13R22.5(G)	20	156/153	L	9.75	320	1124	17.5
275/80R22.5	18	149/146	L	8.25	276	1012	15.0

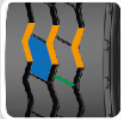
Medium & Long Haul

HD186

Load performance ★★★★★ Wear performance ★★★★★
 Speed performance ★★★★★ Transport distance ★★★★★



○ Wheel position recommended
 ○ Wheel position allowed
 ○ Wheel position not recommended



- The vertical three continuous grooves and the horizontal shallow grooves provide excellent drainage performance and grip performance;
- The wide tread and deep groove patterns provide excellent wear resistance;
- Design of an anti-trapping stone at the bottom of the groove to protect the carcass more effectively.



MAIN SIZES AND PARAMETERS

Size	PR	Loading Index	Speed Rating	Standard Rim	Section Width (mm)	Overall Diameter (mm)	Tread Depth (mm)
12R22.5(G)	18	152/149	L	9.00	300	1085	17.5

Medium & Long Haul

HD580

Load performance ★★★★★ Wear performance ★★★★★
 Speed performance ★★★★★ Transport distance ★★★★★



○ Wheel position recommended
 ○ Wheel position allowed
 ○ Wheel position not recommended



- Concise three longitudinal grooves and oblique grooves in the middle of pattern block is not only suitable for steering wheel positions but also for different wheels positions;
- Design of big pattern block in the middle of tread provides good abrasion resistance.



MAIN SIZES AND PARAMETERS

Size	PR	Loading Index	Speed Rating	Standard Rim	Section Width (mm)	Overall Diameter (mm)	Tread Depth (mm)
315/80R22.5	20	157/154	L	9.00	312	1076	16.5

Medium & Long Haul

HD580++

Load performance ★★★★★ Wear performance ★★★★★
 Speed performance ★★★★★ Transport distance ★★★★★



○ Wheel position recommended ○ Wheel position allowed ○ Wheel position not recommended



- Concise three longitudinal grooves and oblique grooves in the middle of pattern block is not only suitable for steering wheel positions but also for different wheels positions;
- Design of big pattern block in the middle of tread provides good abrasion resistance.



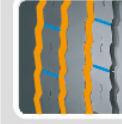
Medium & Long Haul

HD966

Load performance ★★★★★ Wear performance ★★★★★
 Speed performance ★★★★★ Transport distance ★★★★★



○ Wheel position recommended ○ Wheel position allowed ○ Wheel position not recommended



- Four consecutive grooves provide outstanding drainage and grip performance;
- Design of reasonable ratio of grooves and block provides outstanding abrasion resistance.



MAIN SIZES AND PARAMETERS

Size	PR	Loading Index	Speed Rating	Standard Rim	Section Width (mm)	Overall Diameter (mm)	Tread Depth (mm)
315/80R22.5	22	164/160	L	9.00	312	1076	17

MAIN SIZES AND PARAMETERS

Size	PR	Loading Index	Speed Rating	Standard Rim	Section Width (mm)	Overall Diameter (mm)	Tread Depth (mm)
245/70R19.5	16	135/133	M	7.50	248	839	14

Medium & Short Haul

HD260

Load performance ★★★★★ Wear performance ★★★★★
 Speed performance ★★★☆☆ Transport distance ★★★★★



○ Wheel position recommended ○ Wheel position allowed ○ Wheel position not recommended



- Unique block pattern design provides better traction and gripping performance;
- Unique pattern grooves design, enhances pattern's self-clean performance and protects the grooves bottom; Longer service life;
- Special shoulder design, ensures much rigid shoulder, and improves heat dissipation performance.



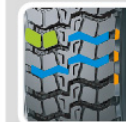
Medium & Short Haul

HD261

Load performance ★★★★★ Wear performance ★★★★★
 Speed performance ★★★☆☆ Transport distance ★★★★★



○ Wheel position recommended ○ Wheel position allowed ○ Wheel position not recommended



- Open shoulder design, broader horizontal groove, provide powerful traction and grip.
- High performance tire tread design, increase anti-abrasion performance.
- Stones emitter at the bottom of pattern grooves increase anti-puncture performance.



MAIN SIZES AND PARAMETERS

Size	PR	Loading Index	Speed Rating	Standard Rim	Section Width (mm)	Overall Diameter (mm)	Tread Depth (mm)
265/70R19.5	18	143/141	K	7.50	262	867	16

MAIN SIZES AND PARAMETERS

Size	PR	Loading Index	Speed Rating	Standard Rim	Section Width (mm)	Overall Diameter (mm)	Tread Depth (mm)
9.5R17.5	18	143/141	M	6.75	240	842	14
315/80R22.5	22	167/164	L	9.00	312	1076	19.5

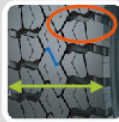
Medium & Short Haul

HD262

Load performance ★★★★★ Wear performance ★★★★★
 Speed performance ★★★☆☆ Transport distance ★★★★★



○ Wheel position recommended ○ Wheel position allowed ○ Wheel position not recommended



- Design of big block-groove ratio improves wear-resisting performance;
- Design of S pattern blocks enhances driving and wet-resisting performance; Bottom tire compound is made of low heating formula, decrease shoulder heating.
- Design of broader tire tread, increase tire ground stress, avoid tire's irregular abrasion.



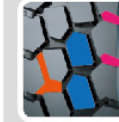
Medium & Short Haul

HD263

Load performance ★★★★★ Wear performance ★★★★★
 Speed performance ★★★☆☆ Transport distance ★★★★★



○ Wheel position recommended ○ Wheel position allowed ○ Wheel position not recommended



- Design of wide rib grooves with lug grooves provides better water dispersion, improves driving and wet-resisting performance;
- Design of pattern blocks offers excellent traction performance;
- Open shoulder and block type pattern provides strong traction and gripping stress.



MAIN SIZES AND PARAMETERS

Size	PR	Loading Index	Speed Rating	Standard Rim	Section Width (mm)	Overall Diameter (mm)	Tread Depth (mm)
12R22.5(G)	18	152/149	L	9.0	300	1085	20.5

MAIN SIZES AND PARAMETERS

Size	PR	Loading Index	Speed Rating	Standard Rim	Section Width (mm)	Overall Diameter (mm)	Tread Depth (mm)
11.00R20	18	152/149	J	8.0	293	1085	17.0
12.00R20(K)	20	156/153	J	8.5	315	1125	20.0

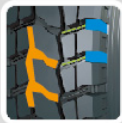
Medium & Short Haul

HD268

Load performance ★★★★★ Wear performance ★★★★★
 Speed performance ★★★☆☆ Transport distance ★★★★★



○ Wheel position recommended ● Wheel position allowed ○ Wheel position not recommended



- Deeper pattern with formulation of abrasion resistance and low heating performance for longer miles;
- Open shoulder and block type pattern provides strong traction and gripping stress;
- Stones emitter stones at the bottom of grooves improves anti-puncture performance.



Medium & Short Haul

HDA68

Load performance ★★★★★ Wear performance ★★★★★
 Speed performance ★★★☆☆ Transport distance ★★★★★



○ Wheel position recommended ● Wheel position allowed ○ Wheel position not recommended



- Lateral block reinforced designed for strong traction and grip;
- The stone ejectors at the bottom of the pattern grooves improves the puncture resistance;
- Tread by abrasion-resistant and gnawing-resistant formula for excellent abrasion resistance.



MAIN SIZES AND PARAMETERS

Size	PR	Loading Index	Speed Rating	Standard Rim	Section Width (mm)	Overall Diameter (mm)	Tread Depth (mm)
7.00R16LT	14	118/114	L	5.50F	200	775	13.0
7.50R16LT	16	125/121	K	6.00G	215	805	13.5
8.25R16LT	16	128/124	K	6.50H	235	855	13.5
8.25R20	16	139/137	J	6.5	236	974	15.5
9.00R20	16	144/142	J	7.0	259	1019	17.0

MAIN SIZES AND PARAMETERS

Size	PR	Loading Index	Speed Rating	Standard Rim	Section Width (mm)	Overall Diameter (mm)	Tread Depth (mm)
10.00R20	18	149/146	J	7.5	278	1054	18.5
11.00R20	18	152/149	J	8.0	293	1084	19.5
12.00R20 (K)	20	156/153	K	8.5	315	1125	19.5

Medium & Short Haul

HD269

Load performance ★★★★★ Wear performance ★★★★★
 Speed performance ★★★☆☆ Transport distance ★★★★★



○ Wheel position recommended ○ Wheel position allowed ○ Wheel position not recommended



- Deeper pattern with formulation of abrasion resistance and low heating performance for longer miles;
- Open shoulder and block type pattern provides strong traction and gripping stress;
- Stones emitter stones at the bottom of grooves improves anti-puncture performance.



Medium & Short Haul

HD285

Load performance ★★★★★ Wear performance ★★★★★
 Speed performance ★★★☆☆ Transport distance ★★★★★



○ Wheel position recommended ○ Wheel position allowed ○ Wheel position not recommended



- Mixed pattern with four longitudinal groove by special shape blocks for elegant appearance, excellent handling performance and different road use condition.
- Tire pattern with variable pitch for effectively prevent the noise from resonance.
- Special transverse groove for low heat generation, good heat dissipation and excellent durability.



MAIN SIZES AND PARAMETERS

Size	PR	Loading Index	Speed Rating	Standard Rim	Section Width (mm)	Overall Diameter (mm)	Tread Depth (mm)
12R22.5(G)	18	152/149	L	9.00	300	1085	19.5
295/80R22.5	20	154/151	K	9.00	298	1044	19.5
315/80R22.5	22	167/164	L	9.00	312	1076	19.5

MAIN SIZES AND PARAMETERS

Size	PR	Loading Index	Speed Rating	Standard Rim	Section Width (mm)	Overall Diameter (mm)	Tread Depth (mm)
225/80R17.5	16	129/127	L	6.75	226	805	13

Mining & Building Site

HD762

Load performance ★★★★★ Wear performance ★★★★★
 Speed performance ★★★★★ Transport distance ★★★★★



○ Wheel position recommended
 ○ Wheel position allowed
 ○ Wheel position not recommended



- Optimized block patterns with wider longitudinal and transverse grooves, enable tires traction to be improved greatly;
- Proper ratio design of block and groove provides good abrasion resistance.



Mining & Building Site

HD765

Load performance ★★★★★ Wear performance ★★★★★
 Speed performance ★★★★★ Transport distance ★★★★★



○ Wheel position recommended
 ○ Wheel position allowed
 ○ Wheel position not recommended



- Optimized block patterns with wider longitudinal and transverse grooves, enable tires traction to be improved greatly;
- Proper ratio design of block and groove provides good abrasion resistance.



MAIN SIZES AND PARAMETERS

Size	PR	Loading Index	Speed Rating	Standard Rim	Section Width (mm)	Overall Diameter (mm)	Tread Depth (mm)
295/80R22.5	20	154/151	K	9.00	298	1044	19
13R22.5	18	154/151	F	9.75	320	1124	19.5
12.00R20	20	156/153	F	8.5	315	1136	20

MAIN SIZES AND PARAMETERS

Size	PR	Loading Index	Speed Rating	Standard Rim	Section Width (mm)	Overall Diameter (mm)	Tread Depth (mm)
6.00R14LT	10	100/96	J	4½J	170	680	11.0
6.00R15LT	10	101/97	J	4½J	170	705	11.0
8.25R16LT	16	128/124	D	6.50H	235	865	18.5
9.00R20	18	147/145	D	7.0	259	1019	20.5

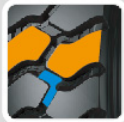
Mining & Building Site

HD769

Load performance ★★★★★ Wear performance ★★★★★
 Speed performance ★★★★★ Transport distance ★★★★★



○ Wheel position recommended ○ Wheel position allowed ○ Wheel position not recommended



- Big block patterns provides better driving performance and gripping stress on bad road;
- Interlaced reinforcing rib design at the pattern block bottom provides better tear resistance and anti-puncturing performance.



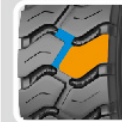
Mining & Building Site

HD769A

Load performance ★★★★★ Wear performance ★★★★★
 Speed performance ★★★★★ Transport distance ★★★★★



○ Wheel position recommended ○ Wheel position allowed ○ Wheel position not recommended



- Big block patterns provides better driving performance and gripping stress on bad road;
- Interlaced reinforcing rib design at the pattern block bottom provides better tear resistance and anti-puncturing performance.



MAIN SIZES AND PARAMETERS

Size	PR	Loading Index	Speed Rating	Standard Rim	Section Width (mm)	Overall Diameter (mm)	Tread Depth (mm)
8.25R16LT	16	128/124	J	6.50H	235	865	18
10.00R20	18	149/146	F	7.5	278	1065	22.5
11.00R20	18	152/149	E	8.0	293	1096	22
12.00R20	20	156/153	E	8.5	315	1136	22.5
295/80R22.5	20	154/151	K	9.00	298	1044	20

MAIN SIZES AND PARAMETERS

Size	PR	Loading Index	Speed Rating	Standard Rim	Section Width (mm)	Overall Diameter (mm)	Tread Depth (mm)
295/80R22.5	20	154/151	K	9.00	298	1044	20

Mining & Building Site

HD776

Load performance ★★★★★ Wear performance ★★★★★
 Speed performance ★★★★★ Transport distance ★★★★★



○ Wheel position recommended ○ Wheel position allowed ○ Wheel position not recommended



- Big block with deep patterns, provides strong gripping stress on bad road;
- Interlaced reinforcing rib design at the pattern block bottom, prevents groove bottom from being punctured, provides better tear resistance and anti-puncturing performance.



Mining & Building Site

HD777K

Load performance ★★★★★ Wear performance ★★★★★
 Speed performance ★★★★★ Transport distance ★★★★★



○ Wheel position recommended ○ Wheel position allowed ○ Wheel position not recommended



- Enlarged and deepened pattern block designed for excellent puncture resistance, impact resistance, and explosion resistance;
- The transverse grooves provides excellent grip and driving force;
- Stepping and anti-stone designed for improving puncture resistance.



MAIN SIZES AND PARAMETERS

Size	PR	Loading Index	Speed Rating	Standard Rim	Section Width (mm)	Overall Diameter (mm)	Tread Depth (mm)
11R22.5	18	149/146	J	9.00	279	1054	21.0
12R22.5	18	152/149	J	9.00	300	1085	22.5
225/80R17.5	16	129/127	F	6.75	226	805	15.0
315/80R22.5	22	167/161	D	9.00	312	1076	22.5

MAIN SIZES AND PARAMETERS

Size	PR	Loading Index	Speed Rating	Standard Rim	Section Width (mm)	Overall Diameter (mm)	Tread Depth (mm)
12.00R20(K)	22	158/155	D	8.5	315	1136	24.5


Mining & Building Site

HD779K

Load performance ★★★★★ Wear performance ★★★★★
 Speed performance ★★★★★ Transport distance ★★★★★



○ Wheel position recommended ○ Wheel position allowed ○ Wheel position not recommended



- Ultra-wide and ultra-deep pattern designed for longer service life;
- Large block pattern designed excellent puncture resistance and impact resistance;
- Stepping and anti-stone designed for improving puncture resistance.



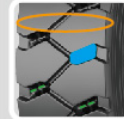
Mining & Building Site

HD786

Load performance ★★★★★ Wear performance ★★★★★
 Speed performance ★★★★★ Transport distance ★★★★★



○ Wheel position recommended ○ Wheel position allowed ○ Wheel position not recommended



- Widened and deepened pattern for excellent puncture and impact resistance and longer service life;
- The transverse grooves provides excellent grip and driving force;
- The bottom of the pattern groove with stone ejector to prevent stones clipped and improve the puncture resistance and effectively protect the carcass.



MAIN SIZES AND PARAMETERS

Size	PR	Loading Index	Speed Rating	Standard Rim	Section Width (mm)	Overall Diameter (mm)	Tread Depth (mm)
12.00R20(K)	22	158/155	D	8.5	315	1136	26.0

MAIN SIZES AND PARAMETERS

Size	PR	Loading Index	Speed Rating	Standard Rim	Section Width (mm)	Overall Diameter (mm)	Tread Depth (mm)
12R22.5(G)	18	152/149	G	9.00	300	1085	24.0
315/80R22.5	20	157/154	G	9.00	312	1082	24.0

Mining & Building Site

HD788

Load performance ★★★★★ Wear performance ★★★★★
 Speed performance ★★★★★ Transport distance ★★★★★



○ Wheel position recommended
 ○ Wheel position allowed
 ○ Wheel position not recommended



- Oversized block pattern provides better driving performance and gripping ability on the bad road conditions;
- Interlaced reinforcing rib design at the pattern block bottom provides better tear resistance and anti-puncturing performance;
- Stone emitter at the bottom of grooves protects tire carcass effectively.



MAIN SIZES AND PARAMETERS

Size	PR	Loading Index	Speed Rating	Standard Rim	Section Width (mm)	Overall Diameter (mm)	Tread Depth (mm)
8.25R20	16	139/137	F	6.5	236	986	18.5
9.00R20	16	144/142	F	7.0	259	1030	20.0
10.00R20	18	149/146	F	7.5	278	1065	22.5
11.00R20	18	152/149	F	8.0	293	1096	22.5
12.00R20	20	156/153	F	8.5	315	1136	24.5

Mining & Building Site

HD788K

Load performance ★★★★★ Wear performance ★★★★★
 Speed performance ★★★★★ Transport distance ★★★★★



○ Wheel position recommended
 ○ Wheel position allowed
 ○ Wheel position not recommended



- Oversized block pattern provides better driving performance and gripping ability on the bad road conditions;
- The special mining tread formula and mixing process improve the cutting resistance and puncture resistance of the rubber compound;
- Stone emitter at the bottom of grooves protects tire carcass effectively.



MAIN SIZES AND PARAMETERS

Size	PR	Loading Index	Speed Rating	Standard Rim	Section Width (mm)	Overall Diameter (mm)	Tread Depth (mm)
12.00R20(K)	20	156/153	F	8.5	315	1136	24.5

Mining & Building Site

HD789K

Load performance ★★★★★ Wear performance ★★★★★
 Speed performance ★☆☆☆☆ Transport distance ★☆☆☆☆



○ Wheel position recommended
 ○ Wheel position allowed
 ○ Wheel position not recommended

-
- Widened and enlarged transverse pattern design for strong traction performance and driving performance;
 - Stone ejectors at the bottom of the pattern groove ensure excellent self-cleaning performance;
 - Special reinforced ribs on the shoulders and a thickened sidewall design to protect the sidewall from external impact and scratches.



MAIN SIZES AND PARAMETERS

Size	PR	Loading Index	Speed Rating	Standard Rim	Section Width (mm)	Overall Diameter (mm)	Tread Depth (mm)
12.00R20 (K)	20	156/153	F	8.5	315	1136	23.0

Winter Series

HD150

Load performance ★★★★★ Wear performance ★★★★★
 Speed performance ★★★★★ Transport distance ★★★★★



○ Wheel position recommended
 ○ Wheel position allowed
 ○ Wheel position not recommended

-
- Big block specially designed for now road provides good control performance and abrasion resistance;
 - Proper sipes design provides good gripping performance and wet slip resistance when driving on snow road, improve tire's ice-breaking performance and driving safety;
 - Ultra-wide of tread provides better driving performance on the road.



MAIN SIZES AND PARAMETERS

Size	PR	Loading Index	Speed Rating	Standard Rim	Section Width (mm)	Overall Diameter (mm)	Tread Depth (mm)
315/70R22.5	18	151/148	L	9.00	312	1020	23.0

Winter Series

HD152

Load performance ★★★★★ Wear performance ★★★★★
 Speed performance ★★★★★ Transport distance ★★★★★



○ Wheel position recommended
 ○ Wheel position allowed
 ○ Wheel position not recommended



- Independent three-groove and four-block mixed pattern for more excellent running performance in snow;
- The snow pattern with wavy grooves by a unique compound formula with tread for outstanding snow grip performance and anti-skid performance;
- Suitable for all-wheel position use condition in Canada, North America and other markets.



MAIN SIZES AND PARAMETERS

Size	PR	Loading Index	Speed Rating	Standard Rim	Section Width (mm)	Overall Diameter (mm)	Tread Depth (mm)
11R22.5	16	148/145	L	8.25	279	1065	21.0
11R24.5	16	149/146	L	8.25	279	1116	21.0

Winter Series

HD159

Load performance ★★★★★ Wear performance ★★★★★
 Speed performance ★★★★★ Transport distance ★★★★★



○ Wheel position recommended
 ○ Wheel position allowed
 ○ Wheel position not recommended



- Big block specially designed for snow road provides good control performance and abrasion resistance;
- Proper steel disc design provides good gripping performance and wet and slip resistance when driving on snow road, improves tire's ice-breaking performance and driving safety;
- Ultra-wide tread provides better driving performance on the road.



MAIN SIZES AND PARAMETERS

Size	PR	Loading Index	Speed Rating	Standard Rim	Section Width (mm)	Overall Diameter (mm)	Tread Depth (mm)
315/70R22.5	18	151/148	L	9.00	312	1020	24.0
315/80R22.5	20	157/154	L	9.00	312	1076	21.0

North America Series

HDD728

Load performance ★★★★★ Wear performance ★★★★★
 Speed performance ★★★★★ Transport distance ★★★★★



○ Wheel position recommended ○ Wheel position allowed ○ Wheel position not recommended



- Better traction and grip performance, Design of special pattern improves traction and grip performance; extra tread formula with design of deeper pattern enhances wear-resisting performance, extends service life.
- Optimized design of shoulder offers better heat dispersion;
- Optimized design of the grooves bottom prevents the bottom from damaging by stone.
- Special design of sipes enhances heat dispersion performance.



MAIN SIZES AND PARAMETERS

Size	PR	Loading Index	Speed Rating	Standard Rim	Section Width (mm)	Overall Diameter (mm)	Tread Depth (mm)
11R22.5	16	146/143	M	8.25	279	1065	18.5
295/75R22.5	16	146/143	M	9.00	298	1020	18.5
11R24.5	16	149/146	M	8.25	279	1116	18.5
285/75R24.5	16	147/144	M	8.25	283	1056	18.5

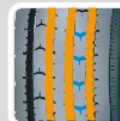
North America Series

HDS228

Load performance ★★★★★ Wear performance ★★★★★
 Speed performance ★★★★★ Transport distance ★★★★★



○ Wheel position recommended ○ Wheel position allowed ○ Wheel position not recommended



- Four consecutive main grooves and three auxiliary fine grooves provide outstanding drainage and grip performance;
- Design of pattern block with V type grooves provide better driving steering and driving performance.



MAIN SIZES AND PARAMETERS

Size	PR	Loading Index	Speed Rating	Standard Rim	Section Width (mm)	Overall Diameter (mm)	Tread Depth (mm)
11R22.5	16	146/143	M	8.25	279	1054	14.5
295/75R22.5	16	146/143	M	9.00	298	1014	14.5
11R24.5	16	149/146	M	8.25	279	1104	13.5
285/75R24.5	16	147/144	M	8.25	283	1050	13.5

North America Series

HDS226

Load performance ★★★★★ Wear performance ★★★★★
 Speed performance ★★★★★ Transport distance ★★★★★



○ Wheel position recommended ○ Wheel position allowed ○ Wheel position not recommended



- Tire pattern with central bamboo-shaped blocks and four grooves make low heat generation, fast heat dissipation, excellent high-speed performance and wet-slip resistance;
- Tire crown with high saturation and more grounding area by a special curve for excellent abrasion resistance and stable handling performance.



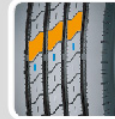
North America Series

HDT128

Load performance ★★★★★ Wear performance ★★★★★
 Speed performance ★★★★★ Transport distance ★★★★★



○ Wheel position recommended ○ Wheel position allowed ○ Wheel position not recommended



- Design of oblique pattern block and zigzag grooves better to outstanding steering performance and stability as well as safe good handling performance on dry and wet road;
- Small sipes better to heat dissipation and the applicability of different wheel location.



MAIN SIZES AND PARAMETERS

Size	PR	Loading Index	Speed Rating	Standard Rim	Section Width (mm)	Overall Diameter (mm)	Tread Depth (mm)
255/70R22.5	16	140/137	L	7.50	255	930	12.5

MAIN SIZES AND PARAMETERS

Size	PR	Loading Index	Speed Rating	Standard Rim	Section Width (mm)	Overall Diameter (mm)	Tread Depth (mm)
11R22.5	16	146/143	M	8.25	279	1054	10.5
295/75R22.5	16	146/143	M	9.00	298	1014	10.5
11R24.5	16	149/146	M	8.25	279	1104	10.5
285/75R24.5	16	147/144	M	8.25	283	1050	10.5

Special Trailer Series

HD161

Load performance ★★★★★ Wear performance ★★★★★
 Speed performance ★★★★★ Transport distance ★★★★★



○ Wheel position recommended
 ○ Wheel position allowed
 ○ Wheel position not recommended



- Special tire tread formula, provide better wear resistance performance, increase tire mileage;
- Broader tire shoulder design, decrease tires abrasion;
- Broader tires tread design, increase operation stability and safety;
- Use special tire bead design and strong framework material, increase tire's loading capacity.



Special Trailer Series

HD182

Load performance ★★★★★ Wear performance ★★★★★
 Speed performance ★★★★★ Transport distance ★★★★★



○ Wheel position recommended
 ○ Wheel position allowed
 ○ Wheel position not recommended



- Special tire tread formula, provide better wear resistance performance, increase tire mileage;
- Broader tire shoulder design, decrease tires abrasion;
- Broader tires tread design, increase operation stability and safety;
- Use special tire bead design and strong framework material, increase tire's loading capacity.



MAIN SIZES AND PARAMETERS

Size	PR	Loading Index	Speed Rating	Standard Rim	Section Width (mm)	Overall Diameter (mm)	Tread Depth (mm)
ST235/85R16	14	132/127	M	6½J	235	806	9.0

MAIN SIZES AND PARAMETERS

Size	PR	Loading Index	Speed Rating	Standard Rim	Section Width (mm)	Overall Diameter (mm)	Tread Depth (mm)
ST225/75R15	12	121/117	L	6J	223	719	9.0
ST235/80R16	14	129/125	M	6½J	235	782	9.0

CORRESPONDING TABLE FOR TBR PARAMETER AS EXCHANGE OF TUBELESS AND TUBE TYPE TIRES

Tire sizes	9.00R20-16 → 10R22.5-14	Tire sizes	9.00R20-16 → 275/80R22.5-16
Dual load capacity	2650kg 2360kg	Dual load capacity	2650kg 3000kg
O.D.	1019mm 1019mm	O.D.	1055mm 1012mm
S.W.	259mm 254mm	S.W.	259mm 276mm
Tire sizes	10.00R20-16 → 11R22.5-16	Tire sizes	10.00R20-16 → 295/80R22.5-18
Dual load capacity	2630kg 2900kg	Dual load capacity	2650kg 3150kg
O.D.	1055mm 1054mm	O.D.	1055mm 1044mm
S.W.	278mm 279mm	S.W.	278mm 298mm
Tire sizes	9.00R20-16 → 10R22.5-14	Tire sizes	9.00R20-16 → 275/80R22.5-16
Dual load capacity	2650kg 2360kg	Dual load capacity	2650kg 3000kg
O.D.	1019mm 1019mm	O.D.	1055mm 1012mm
S.W.	259mm 254mm	S.W.	259mm 276mm
Tire sizes	10.00R20-16 → 11R22.5-16	Tire sizes	10.00R20-16 → 295/80R22.5-18
Dual load capacity	2630kg 2900kg	Dual load capacity	2650kg 3150kg
O.D.	1055mm 1054mm	O.D.	1055mm 1044mm
S.W.	278mm 279mm	S.W.	278mm 298mm

MAINTENANCE OF TUBELESS TIRE

Tubeless tire does not have the tube inside, where a rubber layer with good airtightness is cured into the internal chamber of the tire, which will work as the function of tube. Tubeless tire is the trend of the development of tire, correct maintenance will improve the service life of tire.

1. Change the tire position at regular intervals. Different fatigues and abrasions will be on the tires in different positions, so the position must be changed. For truck tires, normally the position should be changed when running about 12,000 km.
2. Keep the chassis at good technical condition. The conditions such as the misalignment of the front wheel and the deformation of the rims, etc. will quicken the abrasion of the tire.
3. Pneumatic pressure must be inspected every month or for each long-distance travel, including the pressure of the spare tire. Tire pressure must be checked in the cold condition of the tire, namely it should be inspected after parking at least

for 3 hours. If necessary, tire pressure should be inflated to the specified pressure on the nameplate of the vehicle. Because temperature will increase during driving, it is normal that tire pressure is higher than the pressure in cold condition. If you decrease the pressure in hot condition, the pressure will be insufficient when tire is cold. Additionally, the pressure must be checked by high-quality pressure gauge, please do not always believe your eyes.

4. Other Precautions
 - (1) Please check tire pressure in common temperature.
 - (2) Please do not pull out the punctured object immediately.
 - (3) It is forbidden to splash water on the hot tire.
 - (4) It is forbidden to deflate the hot tire.
 - (5) When inflating tubeless tire, we suggest to use air pump with air filter, and nitrogen is the best selection.



ANALYSIS OF COMMON DAMAGES OF TBR TIRES

TIRE CROWN DAMAGES

Tire Crown Pattern Breaking Damage



Steering firstly while vehicle is motionless during starting.

Tire Crown Impact Blast



Impact blast is caused by the impact of foreign object on the tread when the tire pressure is high.

Tire Crown Abrasion Under Low Air Pressure



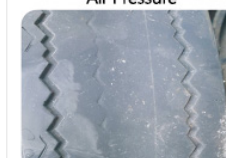
Tire pressure is low and the tread is embedded into the tire. Because the carcass is tightened by the steel cord in the steel belt, only small part of the tread is embedded into the tire and the rubber pattern in the tread is deformed and rubbing each other, which will cause such abrasion.

Eccentric Wear of Tread



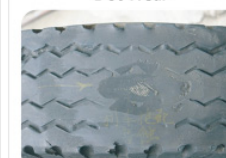
The wear, deformation and displacement of the mechanical parts make the camber of the vehicle being changed, or the repairing and/or calibration of vehicle is not correct, which makes the tread not be vertical to the road surface so causes the eccentric abrasion. This kind of wear is fast.

Tread Wear Under High Air Pressure



The air pressure is high, so the grounding area of the tire is small, which will cause the serious wear of tread center.

Dot Wear



It is caused when tread is punctured by sharp objects such as blot, nail, etc.

TIRE SHOULDER DAMAGES

Puncture and Delamination



The deformation in radial direction on the radial tire is big, so it may be scrapped or punctured by the object in the rough road, which may cause the penetration of muddy water or sands, if they are not found or treated in time, it will cause the delamination by the rusting of the exposed steel cords in the damaged area.

Shoulder Cut



When driving, the tire is cut by the sharp object such as the stone and metal parts or by the embedded parts of suspension plates, etc. At the same time, it may cut and damage the shoulder or damage the steel cords at the end of the steel belt, or it may be caused by the tire burst.

Shoulder Damage & Pattern Block Dropping Off



Tire shoulder is pushed and scratched by the objects such as the Roadbed, etc. or try to pass in force or skidding to start under heavy load, etc, which may cause the chunking of the tire shoulder.

BEAD DAMAGES

Rim Cut



When mounting the tire, the rim is not suitable or it is not well aligned, the guard ring is deformed and it cuts the beads section which will cause such damage.

Rim Break



Because of rim fatigue and nonstandard wheel rim, as well as high air pressure of tire and badly overloading, wheel rim gets widely break so leads to wheel rim exposure.

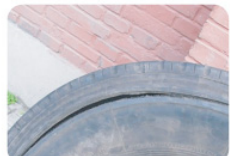
Flange Cut



The rim flange is cracked, the bead section does not have the pressure from rim flange, under the pressure of the inner force, partial of the bead is embedded, and it is damaged by the sharp flange cracking when travelling.

SIDEWALL DAMAGES

Chain Burst



When using the tire under low pressure and with heavy load, the carcass fabric cords are fatigued and broken, which will cause the chain burst.

Side Wall Scratch



It is caused by the puncture or scraping of the object when using the tire.

Foreign Material Between Side Wall



When vehicle is traveling with twin tires, there are some foreign materials between the two tires, where the steel cords of the side wall may deform and cause such damage.

